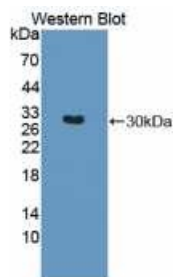


<b>Cat. No:</b>	AB-84247
<b>Size:</b>	100ug
<b>Clone:</b>	POLY
<b>Concentration:</b>	1mg/ml
<b>Host:</b>	Rb
<b>Isotype:</b>	IgG
<b>Immunogen:</b>	Range: Phe167 - Gln423
<b>Reactivity:</b>	Hu, Ms, Rt Western blotting: 1:1000 Immunocytochemistry in formalin fixed cells: 1:50-500 Immunohistochemistry in formalin fixed frozen section: 1:50-500 Immunohistochemistry in paraffin section: 1:10-100 Enzyme-linked Immunosorbent Assay: 1:100-1:5,000 Optimal working dilutions must be determined by end user.
<b>Applications:</b>	
<b>Molecular Weight:</b>	58kDa
<b>Purification:</b>	Aff. Pur.
<b>Synonyms:</b>	TBET, T-bet, TBLYM, T-box protein 21, T-box transcription factor TBX21, T-cell-specific T-box transcription factor T-bet, T-PET, Transcription factor TBLYM
<b>Background:</b>	Description of Target: Transcription factor that controls the expression of the TH1 cytokine, interferon-gamma. Initiates TH1 lineage development from naive TH precursor cells both by activating TH1 genetic programs and by repressing the opposing TH2 programs. Specificity: The antibody is a rabbit polyclonal antibody raised against TBX21. It has been selected for its ability to recognize TBX21 in immunohistochemical staining and western blotting.
<b>Form:</b>	Liquid
<b>Buffer:</b>	Each vial contains 4mg Trehalose, 0.9mg NaCl, 0.2mg Na <sub>2</sub> HPO <sub>4</sub> , 0.05mg Na <sub>3</sub> .
<b>Storage:</b>	Store at +4C. For long term storage, aliquot and store at -20C. Avoid freeze/thaw cycles.



Western Blot with Human  
Recombinant T-box transcription factor  
TBX21

**For Research use only  
IMMUNOLOGICAL SCIENCES**