

Cat. No: AB-83805
Conjugate: Unconjugated
Size: 100 ug
Clone: POLY
Concentration: 1mg/ml
Host: Rabbit
Isotype: IgG

Immunogen: A synthetic peptide corresponding to a sequence within amino acids 300-400 of human TDP-43/TARDB.

Reactivity: Human, Mouse, Rat

Applications: Western Blot: 1:500 - 1:2000
 Immunohistochemistry (paraffin-embedded tissues): 1:50 - 1:200
 Immunofluorescence: 1:50 - 1:200
 Immunocytochemistry: 1:50 - 1:200
 ChIP: 1:50 - 1:200

Molecular Weight: 35kDa/45kDa

Purification: Affinity Purified

Synonyms: ALS10; TDP-43; TDP-43/TARDBP

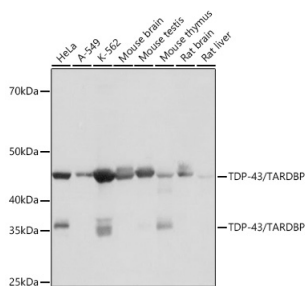
Background:

HIV-1, the causative agent of acquired immunodeficiency syndrome (AIDS), contains an RNA genome that produces a chromosomally integrated DNA during the replicative cycle. Activation of HIV-1 gene expression by the transactivator Tat is dependent on an RNA regulatory element (TAR) located downstream of the transcription initiation site. The protein encoded by this gene is a transcriptional repressor that binds to chromosomally integrated TAR DNA and represses HIV-1 transcription. In addition, this protein regulates alternate splicing of the CFTR gene. A similar pseudogene is present on chromosome 20.

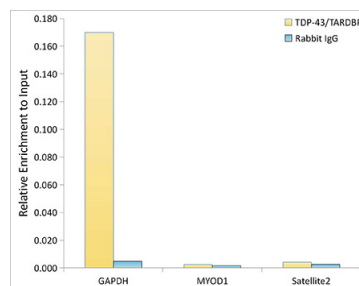
Form: Liquid

Buffer: PBS with 0.02% sodium azide, 0.05% BSA, 50% glycerol, pH 7.3..3.

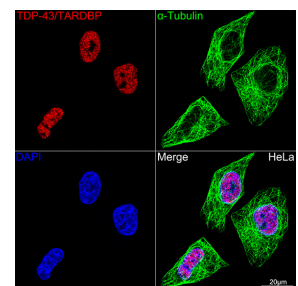
Storage: Store at -20°C. Avoid freeze / thaw cycles.



Western blot analysis of various lysates using TDP-43/TARDBP Rabbit pAb at 1:1000 dilution.
 Secondary antibody: HRP Goat Anti-Rabbit IgG (H+L) at 1:10000 dilution.

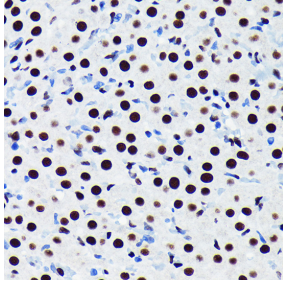


Chromatin immunoprecipitation analysis of extracts of K562 cells, using TDP-43/TARDBP Rabbit pAb and rabbit IgG. The amount of immunoprecipitated DNA was checked

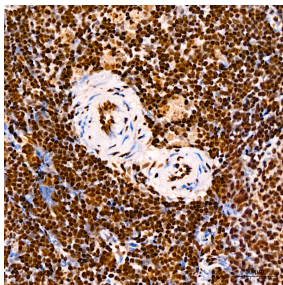


Confocal imaging of HeLa cells using TDP-43/TARDBP Rabbit pAb dilution 1:100 (Red). The cells were counterstained with α -Tubulin Mouse pAb (AC012, dilution 1:400) (Green). DAPI

Lysates/proteins: 25µg per lane.
Blocking buffer: 3% nonfat dry milk in TBST.
Detection: ECL West Pico Plus.
Exposure time: 10s.

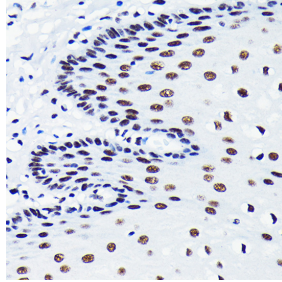


Immunohistochemistry analysis of TDP-43/TARDBP in paraffin-embedded rat ovary using TDP-43/TARDBP Rabbit pAb at dilution of 1:100 (40x lens). Perform microwave antigen retrieval with 10 mM PBS buffer pH 7.2 before commencing with IHC staining protocol.



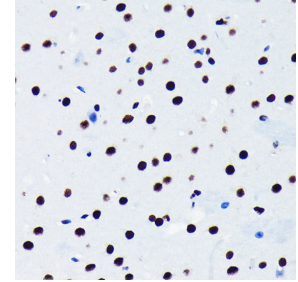
Immunohistochemistry analysis of TDP-43/TARDBP in paraffin-embedded rat spleen using TDP-43/TARDBP Rabbit pAb at dilution of 1:200 (40x lens). Perform high pressure antigen retrieval with 10 mM citrate buffer pH 6.0 before commencing with IHC staining protocol.

by quantitative PCR.
Histogram was constructed by the ratios of the immunoprecipitated DNA to the input.



Immunohistochemistry analysis of TDP-43/TARDBP in paraffin-embedded human esophageal using TDP-43/TARDBP Rabbit pAb at dilution of 1:100 (40x lens). Perform microwave antigen retrieval with 10 mM PBS buffer pH 7.2 before commencing with IHC staining protocol.

was used for nuclear staining (blue).
Objective: 100x.



Immunohistochemistry analysis of TDP-43/TARDBP in paraffin-embedded mouse brain using TDP-43/TARDBP Rabbit pAb at dilution of 1:100 (40x lens). Perform microwave antigen retrieval with 10 mM PBS buffer pH 7.2 before commencing with IHC staining protocol.