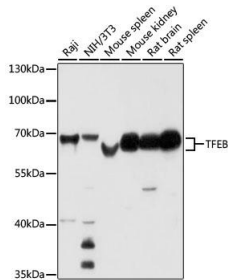


Cat. No:	AB-84280
Size:	100 ug
Clone:	POLY
Concentration:	1mg/ml
Host:	Rb
Isotype:	IgG
Immunogen:	Recombinant protein of human TFEB.
Reactivity:	Hu, Ms, Rt
Applications:	Western Blot: 1:500 - 1:2000 Immunohistochemistry: 1:50 - 1:200 Immunofluorescence: 1:50 - 1:200
Molecular Weight:	70kDa
Purification:	Aff. Pur.
Synonyms:	TFEB;ALPHATFEB;BHLHE35;TCFEB
Form:	Liquid
Buffer:	PBS with 0.02% sodium azide,50% glycerol,pH7.3.
Storage:	Store at -20°C. Avoid freeze / thaw cycles.



Western blot analysis of extracts of various cell lines, using TFEB antibody at 1:1000 dilution.

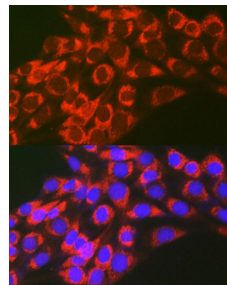
Secondary antibody: HRP Goat Anti-Rabbit IgG (H+L) at 1:10000 dilution.

Lysates/proteins: 25ug per lane.

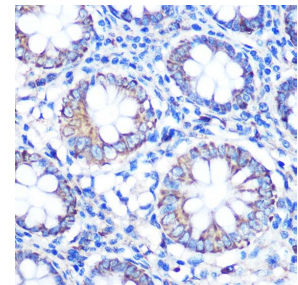
Blocking buffer: 3% nonfat dry milk in TBST.

Detection: ECL West Pico Plus

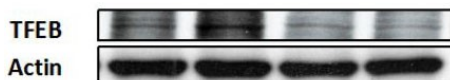
Exposure time: 30s.



Immunofluorescence analysis of NIH-3T3 cells using TFEB Rabbit pAb at dilution of 1:100 (40x lens). Blue: DAPI for nuclear staining.



Immunohistochemistry of paraffin embedded human colon using TFEB Rabbit pAb at dilution of 1:100 (40x lens).



Review for TFEB Rabbit pAb

References

TFEB Rabbit pAb

Product:TFEB Rabbit pAb

Journal:Cellular Signalling

Application:IF

IF:3.937

Species:Homo sapiens

PMID:28366813

Title:MITA modulated autophagy flux promotes cell death in breast cancer cells