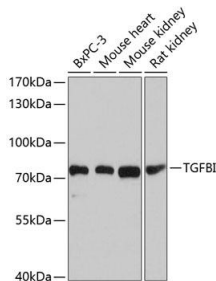
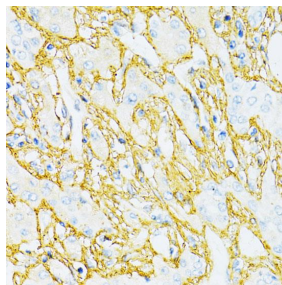


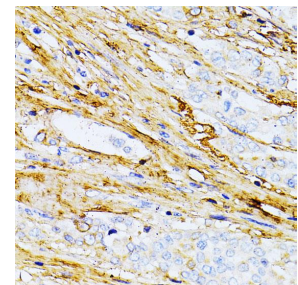
<b>Cat. No:</b>	AB-84169
<b>Size:</b>	100 ug
<b>Clone:</b>	POLY
<b>Concentration:</b>	1mg/ml
<b>Host:</b>	Rb
<b>Isotype:</b>	IgG
<b>Immunogen:</b>	Recombinant fusion protein containing a sequence corresponding to amino acids 481-683 of human TGFBI
<b>Reactivity:</b>	Hu,Ms
<b>Applications:</b>	Western Blot: 1:500 - 1:2000 Immunohistochemistry: 1:50 - 1:200
<b>Molecular Weight:</b>	75kDa
<b>Purification:</b>	Aff. Pur.
<b>Synonyms:</b>	TGFBI; BIGH3; CDB1; CDG2; CDGG1; CSD; CSD1; CS D2; CSD3; EBMD; LCD1; transforming growth fact or beta induced.
<b>Background:</b>	This gene encodes an RGD-containing protein that binds to type I, II and IV collagens. The RGD motif is found in many extracellular matrix proteins modulating cell adhesion and serves as a ligand recognition sequence for several integrins. This protein plays a role in cell-collagen interactions and may be involved in endochondrial bone formation in cartilage. The protein is induced by transforming growth factor-beta and acts to inhibit cell adhesion. Mutations in this gene are associated with multiple types of corneal dystrophy.
<b>Form:</b>	Liquid
<b>Buffer:</b>	PBS with 0.02% sodium azide,50% glycerol,pH7.3.
<b>Storage:</b>	Store at -20°C. Avoid freeze / thaw cycles.



Western blot analysis of extracts of various cell lines, using TGFBI antibody at 1:1000 dilution. Secondary antibody: HRP Goat Anti-Rabbit IgG (H+L) at 1:10000 dilution. Lysates/proteins: 25ug per lane. Blocking buffer: 3% nonfat dry milk in TBST. Detection: ECL Basic Kit.

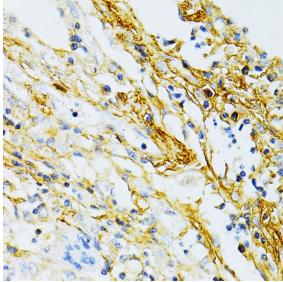


Immunohistochemistry of paraffin embedded human liver cancer using TGFBI antibody at dilution of 1:100 (40x lens).



Immunohistochemistry of paraffin embedded human colon carcinoma using TGFBI antibody at dilution of 1:100 (40x lens).

Exposure time: 5s.



Immunohistochemistry of paraffin  
embedded  
human lung cancer using  
TGFBI antibody at dilution of  
1:100 (40x lens).

**For Research use only  
IMMUNOLOGICAL SCIENCES**