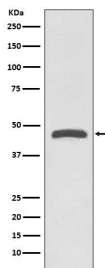
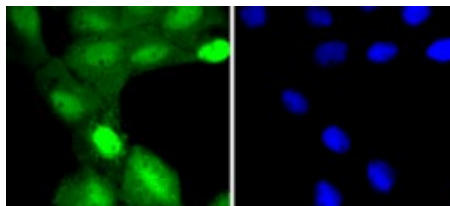


Cat. No:	MAB-94384
Size:	100 ug
Clone:	IDG-20
Concentration:	1mg/ml
Host:	Rb
Isotype:	IgG
Immunogen:	A synthesized peptide derived from human TSG101
Reactivity:	Hu, Ms, Rt
Applications:	Western Blot: 1:500-1:2000 Immunohistochemistry: 1:50-1:200 ICC/IF 1:50-1:200 Flow Cytometry 1:50
Molecular Weight:	43kDa
Purification:	Aff. Pur.
Synonyms:	Tumor susceptibility gene 101 protein;ESCRT-I complex subunit TSG101;TSG101; Component of the ESCRT-I complex, a regulator of vesicular trafficking process. Binds to ubiquitinated cargo proteins and is required for the sorting of endocytic ubiquitinated cargos into multivesicular bodies (MVBs). Mediates the association between the ESCRT-0 and ESCRT-I complex. Required for completion of cytokinesis; the function requires CEP55. May be involved in cell growth and differentiation. Acts as a negative growth regulator. Involved in the budding of many viruses through an interaction with viral proteins that contain a late-budding motif P-[ST]-A-P. This interaction is essential for viral particle budding of numerous retroviruses..Subcellular Localization: Cytoplasm. Membrane; Peripheral membrane protein. Nucleus. Late endosome membrane; Peripheral membrane protein. Mainly cytoplasmic.Membrane-associated when active and soluble when inactive. Depending on the stage of the cell cycle, detected in the nucleus. Colocalized with CEP55 in the midbody during cytokinesis.
Background:	
Form:	Liquid
Buffer:	PBS with 0.02% sodium azide, 50% glycerol, pH7.3.
Storage:	Store for short term at 4-8°C .At -20°C for longer term. Avoid freeze / thaw cycles.



Western blot analysis of TSG101 expression in Jurkat cell lysate
Electrophoresis was performed on a 5-20% SDS-PAGE gel at 70V (Stacking



IF analysis of immunocytochemical section of A431 cell using anti- TSG101 antibody

Enzyme antigen retrieval was performed using IHC enzyme antigen retrieval reagent for 15 mins. The tissue section was blocked with 10% goat serum. The

gel) / 90V (Resolving gel) for 2-3 hours.
50ug of sample was loaded each
lane under reducing conditions.
After Electrophoresis, proteins were
transferred to a NC at 150mA for 50-90
minutes. Blocked the membrane with 5%
Non-fat Milk/ TBS for 1.5 hour at RT. The
membrane was incubated overnight at
4°C, then washed with TBS-0.1% Tween 3
times with 5 minutes each and probed
with a goat anti-rabbit IgG-HRP
secondary antibody at a dilution of
1:10,000 for 1.5 hour at RT. ECL West
Pico Plus with Tanon 5200 system.

tissue section was then incubated with
2µg/mL rabbit anti- TSG101 Antibody
overnight at 4°C. AF488 Conjugated
Goat Anti-Rabbit IgG was used as
secondary antibody at 1:100 dilution and
incubated for 30 minutes at 37°C. The
section was counterstained with DAPI.
Visualize using a fluorescence
microscope and filter sets appropriate
for the label use

**For Research use only
IMMUNOLOGICAL SCIENCES**