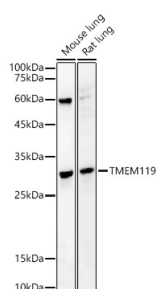


|                          |   |
|--------------------------|---|
| <b>Cat. No:</b>          | AB-84430  |
| <b>Conjugate:</b>        | Unconjugated  |
| <b>Size:</b>             | 100 ug  |
| <b>Clone:</b>            | POLY  |
| <b>Concentration:</b>    | 1mg/ml  |
| <b>Host:</b>             | Rabbit  |
| <b>Isotype:</b>          | IgG   |
| <b>Immunogen:</b>        | Recombinant fusion protein containing a sequence corresponding to amino acids 160-270 of human TMEM119.   |
| <b>Reactivity:</b>       | Mouse,Rat   |
| <b>Applications:</b>     | Western Blot: 1:500 – 1:2000  |
| <b>Molecular Weight:</b> | 29kDa   |
| <b>Purification:</b>     | Affinity purification   |
| <b>Synonyms:</b>         | OBIF; TMEM119   |
| <b>Background:</b>       | Involved in positive regulation of bone mineralization; positive regulation of osteoblast differentiation; and positive regulation of osteoblast proliferation. Located in plasma membrane. |
| <b>Form:</b>             | Liquid  |
| <b>Buffer:</b>           | PBS with 0.05% proclin300,50% glycerol,pH7.3.   |
| <b>Storage:</b>          | Store at -20°C. Avoid freeze / thaw cycles.   |



Western blot analysis of various lysates,  
using TMEM119 Rabbit pAb at 1:1000  
dilution.

Secondary antibody: HRP Goat Anti-  
Rabbit IgG (H+L) at 1:10000 dilution.

Lysates/proteins: 25ug per lane.

Blocking buffer: 3% nonfat dry milk in  
TBST.

Detection: ECL West Pico Plus.

Exposure time: 120s.

**For Research use only  
IMMUNOLOGICAL SCIENCES**