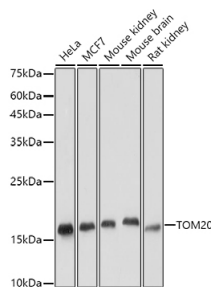
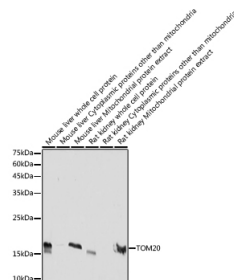


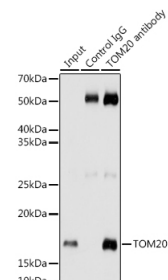
<b>Cat. No:</b>	MAB-94758
<b>Conjugate:</b>	Unconjugated
<b>Size:</b>	100 ug
<b>Clone:</b>	ARC5002-01
<b>Concentration:</b>	1mg/ml
<b>Host:</b>	Rabbit
<b>Isotype:</b>	IgG
<b>Immunogen:</b>	Recombinant fusion protein containing a sequence corresponding to amino acids 20-145 of human TOM20
<b>Reactivity:</b>	Hu, Ms, Rt
<b>Applications:</b>	Western Blot: 1:2000 - 1:6000 Immunohistochemistry: 1:50 - 1:200 Immunofluorescence: 1:100 - 1:500 Immunocytochemistry 1:100 - 1:500 Immunoprecipitation: 1:500 - 1:1000
<b>Molecular Weight:</b>	16kDa
<b>Purification:</b>	Aff. Pur.
<b>Synonyms:</b>	TOMM20;MAS20;MOM19;TOM20
<b>Background:</b>	Central component of the receptor complex responsible for the recognition and translocation of cytosolically synthesized mitochondrial preproteins. Together with TOM22 functions as the transit peptide receptor at the surface of the mitochondrion outer membrane and facilitates the movement of preproteins into the TOM40 translocation pore (By similarity. Required for the translocation across the mitochondrial outer membrane of cytochrome P450 monooxygenases.
<b>Form:</b>	Liquid
<b>Buffer:</b>	PBS with 0.05% proclin300,0.05% BSA,50% glycerol,pH7.3.
<b>Storage:</b>	Store at -20°C. Avoid freeze / thaw cycles.



Western blot analysis of extracts of various cell lines, using TOM20 antibody at 1:5000 dilution.  
Secondary antibody: HRP Goat Anti-Rabbit IgG (H+L) at 1:10000 dilution.  
Lysates/proteins: 25ug per lane.  
Blocking buffer: 3% nonfat dry milk in

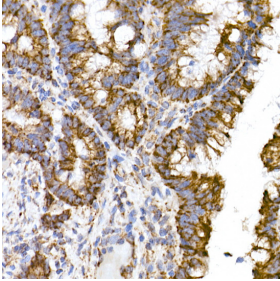


Western blot analysis of extracts of various cell lines, using TOM20 antibody at 1:5000 dilution.  
Secondary antibody: HRP Goat Anti-Rabbit IgG (H+L) at 1:10000 dilution.  
Lysates/proteins: 25ug per lane.  
Blocking buffer: 3% nonfat dry milk in



Immunoprecipitation analysis of 200ug extracts of HeLa cells using 3ug TOM20 antibody.  
Western blot was performed from the immunoprecipitate using TOM20 antibody at a dilution of 1:1000.

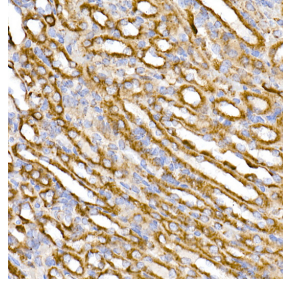
TBST.  
Detection: ECL Basic Kit  
Exposure time: 60s.



Immunohistochemistry of paraffin embedded human colon carcinoma using TOM20 Rabbit mAb at dilution of 1:50 (40x lens).

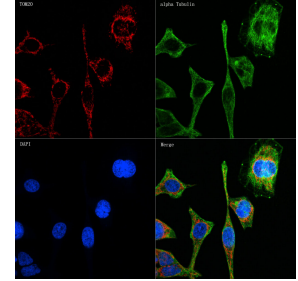
Perform microwave antigen retrieval with 10 mM Tris/EDTA buffer pH 9.0 before commencing with IHC staining protocol.

TBST.  
Detection: ECL Basic Kit  
Exposure time: 10s.



Immunohistochemistry of paraffin embedded mouse kidney using TOM20 Rabbit mAb at dilution of 1:50 (40x lens).

Perform microwave antigen retrieval with 10 mM Tris/EDTA buffer pH 9.0 before commencing with IHC staining protocol.



Confocal imaging of HeLa cells using TOM20 Rabbit mAb dilution 1:100 (Red). The cells were counterstained with  $\alpha$ -Tubulin Mouse mAb (dilution 1:400) (Green). DAPI was used for nuclear staining (blue). Objective: 60x.

## References