

<b>Cat. No:</b>	AB-83821
<b>Conjugate:</b>	Unconjugated
<b>Size:</b>	100 ug
<b>Clone:</b>	POLY
<b>Concentration:</b>	1mg/ml
<b>Host:</b>	Rabbit
<b>Isotype:</b>	IgG
<b>Immunogen:</b>	Recombinant fusion protein containing a sequence corresponding to amino acids 1-280 of human TrkA
<b>Reactivity:</b>	Human, Mouse, Rat
<b>Applications:</b>	Western Blot: 1:500 – 1:1000 Immunohistochemistry: 1:50 – 1:200
<b>Molecular Weight:</b>	120 kDa
<b>Purification:</b>	Aff. Pur.
<b>Synonyms:</b>	MTC; TRK; TRK1; TRKA; Trk-A; p140-TrkA

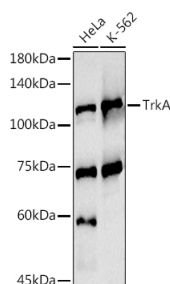
**Background:**

This gene encodes a member of the neurotrophic tyrosine kinase receptor (NTRK) family.

This kinase is a membrane-bound receptor that, upon neurotrophin binding, phosphorylates itself and members of the MAPK pathway. The presence of this kinase leads to cell differentiation and may play a role in specifying sensory neuron subtypes.

Mutations in this gene have been associated with congenital insensitivity to pain, anhidrosis, self-mutilating behavior, cognitive disability and cancer. Alternate transcriptional splice variants of this gene have been found, but only three have been characterized to date.

<b>Form:</b>	Liquid
<b>Buffer:</b>	PBS with 0.02% sodium azide, 50% glycerol, pH 7.3.
<b>Storage:</b>	Store at -20°C. Avoid freeze / thaw cycles

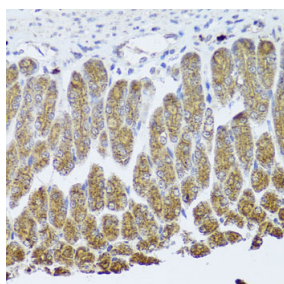


Western blot analysis of extracts of various cell lines, using TrkA antibody at 1:1000 dilution.

Secondary antibody: HRP Goat Anti-Rabbit IgG (H+L) at 1:10000 dilution.

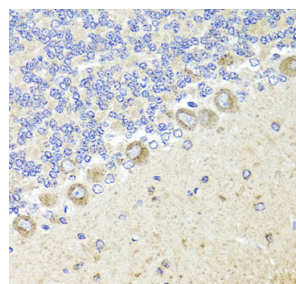
Lysates/proteins: 25ug per lane.

Blocking buffer: 3% nonfat dry milk in



Immunohistochemistry of paraffinembedded mouse stomach using TrkA Antibody at dilution of 1:100 (40x lens).

Perform microwave antigen retrieval with 10 mM PBS buffer pH 7.2 before commencing with IHC staining protocol.



Immunohistochemistry of paraffinembedded rat cerebellum using TrkA Antibody at dilution of 1:100 (40x lens).

Perform microwave antigen retrieval with 10 mM PBS buffer pH 7.2 before commencing with IHC staining protocol.

TBST.  
Detection: ECL Basic Kit  
Exposure time: 10s

**For Research use only  
IMMUNOLOGICAL SCIENCES**