

Cat. No:	MAB-94382
Conjugate:	Unconjugated
Size:	100 ug
Clone:	ADBI-20
Concentration:	1mg/ml
Host:	Rb
Isotype:	IgG
Immunogen:	A synthesized peptide derived from human TRPM8 Activated by icilin, eucalyptol, menthol, cold and modulation of intracellular pH. Involved in menthol sensation. Permeable for monovalent cations sodium, potassium, and cesium and divalent cation calcium.
Reactivity:	Hu, Ms
Applications:	Western Blot: 1:500~1:2000 Immunocytochemistry: 1:50~1:200 Immunofluorescence: 1:50~1:200
Purification:	Affinity-chromatography
Form:	Liquid
Buffer:	Rabbit IgG in phosphate buffered saline, pH 7.4, 150mM NaCl, 0.02% sodium azide and 50% glycerol.
Storage:	Store at +4°C short term. Store at -20°C long term. Avoid freeze / thaw cycle.

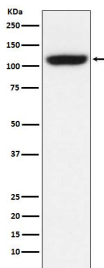


Figure 1. Western blot analysis of TRPM8 using anti-TRPM8

Antibody Electrophoresis was performed on a 5-20% SDS-PAGE gel at 70V (Stacking gel) / 90V (Resolving gel) for 2-3 hours. The sample well of each lane was loaded with 50ug of sample under reducing conditions.

After Electrophoresis, proteins were transferred to a Nitrocellulose membrane at 150mA for 50-90 minutes. Blocked the membrane with 5% Non-fat Milk/ TBS for 1.5 hour at RT.

The membrane was incubated with rabbit anti-TRPM8 antigen affinity purified polyclonal antibody at 0.5 ug/mL overnight at 4°C, then washed with

TBS-0.1%Tween 3
times with 5 minutes each and probed
with a goat anti-Rabbit
IgG IgG-HRP secondary antibody at a
dilution of 1:10000 for 1.5 hour at RT.
The signal is developed using an
Enhanced
Chemiluminescent detection (ECL) kit
with Tanon 5200 system. A specific band
was detected for TRPM8.

**For Research use only
IMMUNOLOGICAL SCIENCES**