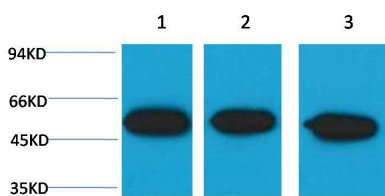
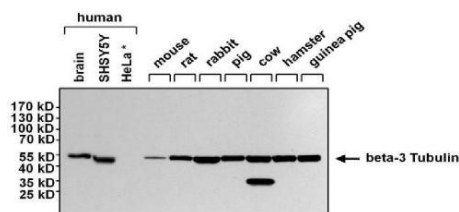


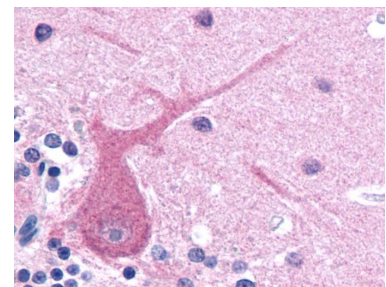
Cat. No:	MAB-94802
Conjugate:	Unconjugated
Size:	100 ug
Clone:	TU-16
Concentration:	1mg/ml
Host:	Mouse
Isotype:	IgG1
Immunogen:	Peptide (C) 441-448 coupled to maleimide-activated keyhole limpet hemocyanin via cysteine added to the N-terminus of the neuron-specific peptide.
Reactivity:	Human, Mouse, Rat
Applications:	WesternBlot:1/5000 Immunohistochemistry:1/200-500
Molecular Weight:	50kDa
Purification:	Aff. Pur.
Synonyms:	beta 3 tubulin antibody CDCBM antibody TUBB3 antibody Tubulin beta III antibody
Background:	Tubulin is the major constituent of microtubules. It exists as a heterodimer consisting of an alpha and a beta subunit. TUBB3 plays a critical role in proper axon guidance and maintenance.
Form:	Liquid
Buffer:	PBS with 0.02% sodium azide and 50% glycerol pH 7.4.
Storage:	Store at -20°C. Avoid repeated freeze-thaw cycles.



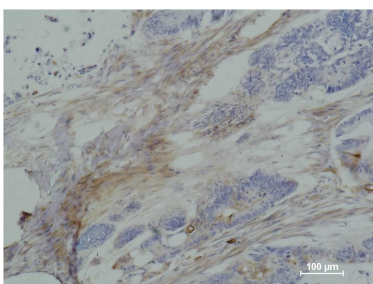
Western blot analysis of) HeLa 2) Mouse Brain 3) Rat Brain with β III tubulin Mouse mAb diluted at:5000.



Western Blot analysis using Tubulin Beta III Monoclonal Antibody.



Immunohistochemistry staining of human brain (paraffin sections) using anti-betaIII tubulin.



Immunohistochemical analysis of
paraffin-embedded human Colon
carcinoma using beta III tubulin Mouse mAb
diluted at:500.

**For Research use only
IMMUNOLOGICAL SCIENCES**