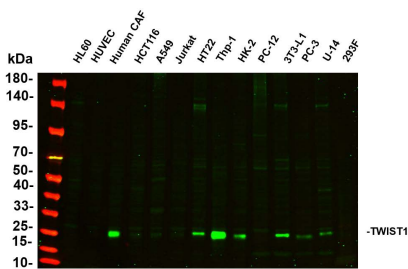


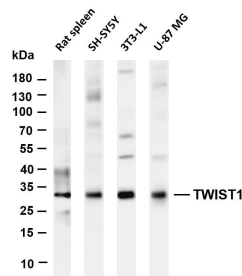
Cat. No:	MABN36693
Conjugate:	Unconjugated
Size:	100 ul
Clone:	Monoclonal
Concentration:	1mg/ml
Host:	Rabbit
Isotype:	IgG,Kappa
Immunogen:	Endogenous
Reactivity:	Human,Mouse, Rat
Applications:	WB 1:500-1:1000,IHC 1:50-1:100,ICC/IF 1:50-1:200,ELISA 1:5000-1:20000
Molecular Weight:	26 kDa
Purification:	Protein A
Synonyms:	BHLHA38 TWIST

Background: Basic helix-loop-helix (bHLH) transcription factors have been implicated in cell lineage determination and differentiation. The protein encoded by this gene is a bHLH transcription factor and shares similarity with another bHLH transcription factor, Dermo1. The strongest expression of this mRNA is in placental tissue; in adults, mesodermally derived tissues express this mRNA preferentially. Mutations in this gene have been found in patients with Saethre-Chotzen syndrome.

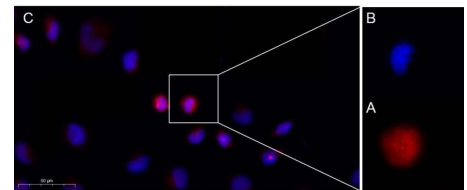
Form:	liquid
Buffer:	PBS, 50% glycerol, 0.05% Proclin 300, 0.05% Protective protein
Storage:	Aliquot and store at -20°C (valid for 12 months). Avoid freeze/thaw cycles.



Various whole cell lysates were separated by 4-20% SDS-PAGE, and the primary antibody was used at 4°C, over night with a 1:5000 dilution .



Various whole cell lysates were separated by 4-20% SDS-PAGE, and the membrane was blotted with anti-TWIST1 antibody. The HRP Goat anti-Rabbit IgG(H + L) antibody was used to detect the antibody.



Immunofluorescence analysis of HeLa .

Picture A: TWIST1 Rabbit mAb (red).

Picture B: DAPI (blue).

Picture C: Merge of A+B

**For Research use only
IMMUNOLOGICAL SCIENCES**