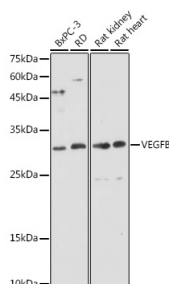


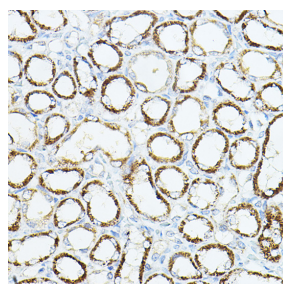
Cat. No:	AB-82949
Conjugate:	Unconjugated
Size:	100 ug
Clone:	POLY
Concentration:	1mg/ml
Host:	Rb
Isotype:	IgG
Immunogen:	Synthetic peptide corresponding to a sequence within amino acids 40-100 of mouse VEGFB
Reactivity:	Hu, Ms, Rt
Applications:	WB 1:1000 - 1:2000 IHC 1:50 - 1:200
Molecular Weight:	32kDa
Purification:	Aff. Pur.
Synonyms:	VEGFB;VEGFL;VRF;VEGF-B

Background: This gene encodes a member of the PDGF (platelet-derived growth factor)/VEGF (vascular endothelial growth factor) family. The VEGF family members regulate the formation of blood vessels and are involved in endothelial cell physiology. This member is a ligand for VEGFR-1 (vascular endothelial growth factor receptor 1) and NRP-1 (neuropilin-1). Studies in mice showed that this gene was co-expressed with nuclearencoded mitochondrial genes and the encoded protein specifically controlled endothelial uptake of fatty acids. Alternatively spliced transcript variants encoding distinct isoforms have been identified.

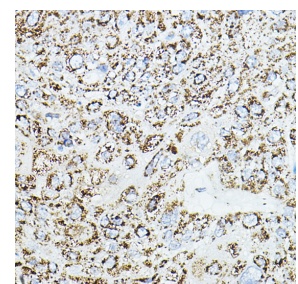
Form:	Liquid
Buffer:	PBS with 0.01% thiomersal,50% glycerol,pH7.3.
Storage:	Store at -20°C. Avoid freeze / thaw cycles.



Western blot analysis of extracts of various cell lines, using VEGFB antibody at 1:1000 dilution. Secondary antibody: HRP Goat Anti-Rabbit IgG (H+L) at 1:10000 dilution.
Lysates/proteins: 25ug per lane.
Blocking buffer: 3% nonfat dry milk in TBST.
Detection: ECL Basic Kit.



Immunohistochemistry of paraffinembedded rat kidney using VEGFB Rabbit Ab at dilution of 1:150 (40x lens). Perform high pressure antigen retrieval with 10 mM citrate buffer pH 6.0 before commencing with IHC staining protocol.



Immunohistochemistry of paraffinembedded human esophageal cancer using VEGFB Rabbit Ab at dilution of 1:150 (40x lens). Perform high pressure antigen retrieval with 10 mM citrate buffer pH 6.0 before commencing with IHC staining protocol.

Exposure time: 30s.

**For Research use only
IMMUNOLOGICAL SCIENCES**