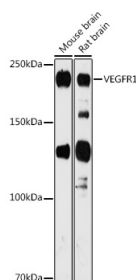


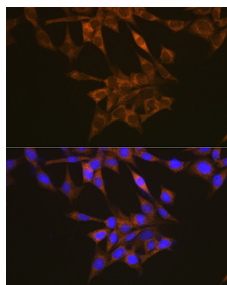
<b>Cat. No:</b>	AB-84736
<b>Conjugate:</b>	Unconjugated
<b>Size:</b>	100 ug
<b>Clone:</b>	POLY
<b>Concentration:</b>	1mg/ml
<b>Host:</b>	Rabbit
<b>Isotype:</b>	IgG
<b>Immunogen:</b>	Recombinant fusion protein containing a sequence corresponding to amino acids 1100-1180 of human VEGFR1.
<b>Reactivity:</b>	Human, Rat, Mouse
<b>Applications:</b>	Western Blot: 1:500 - 1:1000 Immunofluorescence: 1:50 - 1:200 Immunocytochemistry: 1:50 - 1:200
<b>Molecular Weight:</b>	200kDa
<b>Purification:</b>	Affinity purification
<b>Synonyms:</b>	FLT;FLT-1;VEGFR-1;VEGFR1;FLT1

**Background:** This gene encodes a member of the vascular endothelial growth factor receptor (VEGFR) family. VEGFR family members are receptor tyrosine kinases (RTKs) which contain an extracellular ligand-binding region with seven immunoglobulin (Ig)-like domains, a transmembrane segment, and a tyrosine kinase (TK) domain within the cytoplasmic domain. This protein binds to VEGFR-A, VEGFR-B and placental growth factor and plays an important role in angiogenesis and vasculogenesis. Expression of this receptor is found in vascular endothelial cells, placental trophoblast cells and peripheral blood monocytes. Multiple transcript variants encoding different isoforms have been found for this gene. Isoforms include a full-length transmembrane receptor isoform and shortened, soluble isoforms. The soluble isoforms are associated with the onset of preeclampsia.

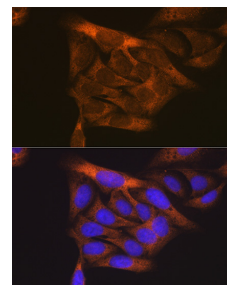
<b>Form:</b>	Liquid
<b>Buffer:</b>	PBS with 0.01% thiomersal,50% glycerol,pH7.3.
<b>Storage:</b>	Store at -20°C. Avoid repeated freeze-thaw cycles.



Western blot analysis of extracts of various cell lines, using VEGFR1 antibody at 1:1000



Immunofluorescence analysis of NIH/3T3 cells using VEGFR1 antibody at dilution of 1:100.



Immunofluorescence analysis of U2OS cells using VEGFR1 antibody at dilution of 1:100.

dilution.  
Secondary antibody: HRP Goat Anti-  
Rabbit IgG (H+L) at 1:10000 dilution.  
Lysates/proteins: 25ug per lane.  
Blocking buffer: 3% nonfat dry milk in  
TBST.  
Detection: ECL West Pico Plus.  
Exposure time: 180s.

Blue: DAPI for nuclear staining.

Blue: DAPI for nuclear staining.