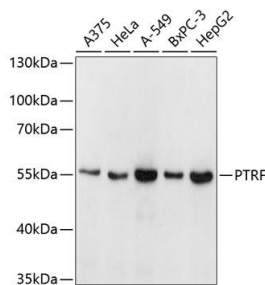


Cat. No:	AB-84127
Size:	100 ug
Clone:	POLY
Concentration:	1mg/ml
Host:	Rb
Isotype:	IgG
Immunogen:	A synthetic peptide of human PTRF
Reactivity:	Hu, Ms, Rt
Applications:	Western Blot: 1:500 – 1:1000 Immunofluorescence: 1:50
Molecular Weight:	55kDa
Purification:	Aff. Pur.
Synonyms:	CAVIN1; CAVIN; CGL4; FKSG13; PTRF; cavin-1; caveolae associated protein 1

Background:

This gene encodes a protein that enables the dissociation of paused ternary polymerase I transcription complexes from the 3' end of pre-rRNA transcripts. This protein regulates rRNA transcription by promoting the dissociation of transcription complexes and the reinitiation of polymerase I on nascent rRNA transcripts. This protein also localizes to caveolae at the plasma membrane and is thought to play a critical role in the formation of caveolae and the stabilization of caveolins. This protein translocates from caveolae to the cytoplasm after insulin stimulation. Caveolae contain truncated forms of this protein and may be the site of phosphorylation-dependent proteolysis. This protein is also thought to modify lipid metabolism and insulin-regulated gene expression. Mutations in this gene result in a disorder characterized by generalized lipodystrophy and muscular dystrophy.

Form:	Liquid
Buffer:	PBS with 0.02% sodium azide, pH7.2
Storage:	Store at 4°C. Avoid freeze / thaw cycles.



Western blot analysis of extracts of various cell lines, using PTRF antibody at 1:1000 dilution.
Secondary antibody: HRP Goat Anti-Rabbit
IgG (H+L) at 1:10000 dilution.
Lysates/proteins: 25ug per lane.
Blocking buffer: 3% nonfat dry milk in

TBST.
Detection: ECL West Pico Plus
Exposure time: 1s.

**For Research use only
IMMUNOLOGICAL SCIENCES**