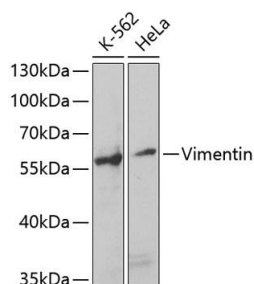
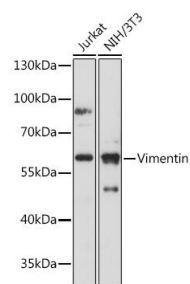


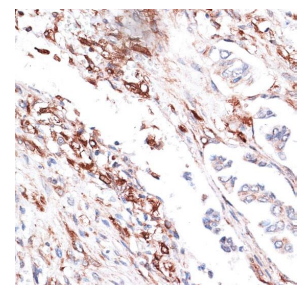
Cat. No:	MAB-94625
Conjugate:	Unconjugated
Size:	100 ug
Clone:	D21H3
Concentration:	1mg/ml
Host:	Rb
Isotype:	IgG
Immunogen:	Recombinant fusion protein containing a sequence corresponding to amino acids 1-200 of human Vimentin.
Reactivity:	Hu, Ms, Rt
Applications:	Western Blot: 1:500 - 1:2000 Immunohistochemistry: 1:50 - 1:200 Immunofluorescence: 1:50 - 1:200 Immunoprecipitation: 1:50 - 1:200
Molecular Weight:	56kDa
Purification:	Purified
Synonyms:	CTRCT30;HEL113;Vimentin;VIM;vimentin
Background:	This gene encodes a member of the intermediate filament family. Intermediate filaments, along with microtubules and actin microfilaments, make up the cytoskeleton. The protein encoded by this gene is responsible for maintaining cell shape, integrity of the cytoplasm, and stabilizing cytoskeletal interactions. It is also involved in the immune response, and controls the transport of low-density lipoprotein (LDL)-derived cholesterol from a lysosome to the site of esterification. It functions as an organizer of a number of critical proteins involved in attachment, migration, and cell signaling. Mutations in this gene causes a dominant, pulverulent cataract
Form:	Liquid
Buffer:	PBS with 0.02% sodium azide,50% glycerol,pH7.3.
Storage:	For long term storage, leave frozen at -20°C. Avoid freeze / thaw cycles.



Western blot analysis of extracts of various cell lines, using Vimentin antibody at 1:1000 dilution. Secondary antibody: HRP Goat Anti-Rabbit IgG (H+L) at 1:10000 dilution.

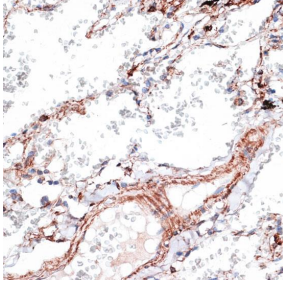


Western blot analysis of extracts of various cell lines, using Vimentin antibody at 1:500 dilution. Secondary antibody: HRP Goat Anti-Rabbit IgG (H+L) at 1:10000 dilution.



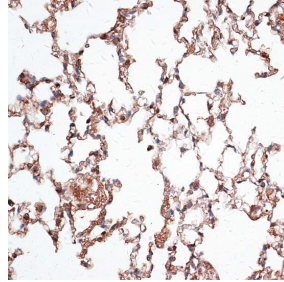
Immunohistochemistry of paraffin embedded human lung cancer using Vimentin antibody at dilution of 1:100 (40x lens).

Lysates/proteins: 25ug per lane.
Blocking buffer: 3% nonfat dry milk in
TBST.
Detection: ECL West Pico Plus.
Exposure time: 90s.

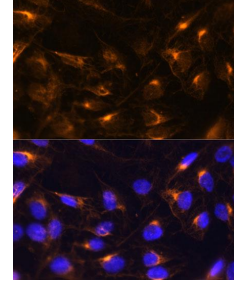


Immunohistochemistry of paraffin embedded human lung using Vimentin antibody at dilution of 1:100 (40x lens).

Lysates/proteins: 25ug per lane.
Blocking buffer: 3% nonfat dry milk in
TBST.
Detection: ECL West Pico Plus.
Exposure time: 30s.



Immunohistochemistry of paraffin embedded mouse lung using Vimentin antibody at dilution of 1:100 (40x lens).



Immunofluorescence analysis of U2OS cells using Vimentin antibody at dilution of 1:100. Blue: DAPI for nuclear staining.