

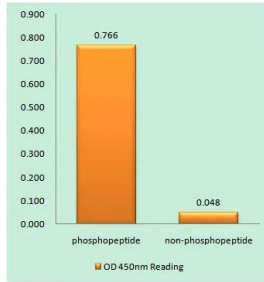
Cat. No: ABN05623
Conjugate: Unconjugated
Size: 100ul
Clone: POLY
Concentration: 1mg/ml
Host: Rabbit
Isotype: IgG

Immunogen: Phosphopeptide [Phospho-left] and Non-Phosphopeptide [Phospho-right], using Vimentin [Phospho-Ser56] Antibody Immunohistochemistry analysis of paraffin-embedded human breast carcinoma, using Vimentin [Phospho-Ser56] Antibody. The picture on the right is blocked with the phospho peptide.

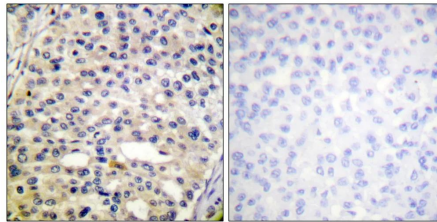
Reactivity: Human,Rat,Mouse
Applications: WB 1:500-1:2000,IHC 1:100-1:300,ICC/IF 1:50-1:200,ELISA 1:10000-1:20000
Molecular Weight: 54kDa
Purification: Affinity purification
Synonyms: VIM; Vimentin

Background: This gene encodes a member of the intermediate filament family. Intermediate filaments, along with microtubules and actin microfilaments, make up the cytoskeleton. The protein encoded by this gene is responsible for maintaining cell shape, integrity of the cytoplasm, and stabilizing cytoskeletal interactions. It is also involved in the immune response, and controls the transport of low-density lipoprotein (LDL)-derived cholesterol from a lysosome to the site of esterification. It functions as an organizer of a number of critical proteins involved in attachment, migration, and cell signaling. Mutations in this gene causes a dominant, pulverulent cataract.[provided by RefSeq, Jun 2009],function:Vimentins are class-III intermediate filaments found in various non-epithelial cells, especially mesenchymal cells.,online information:Vimentin entry,PTM:One of the most prominent phosphoproteins in various cells of mesenchymal origin. Phosphorylation is enhanced during cell division, at which time vimentin filaments are significantly reorganized.,sequence caution:Intron retention.,similarity:Belongs to the intermediate filament family.,subunit:Homopolymer. Interacts with HCV core protein. Interacts with LGSN and SYNM.,tissue specificity:Highly expressed in fibroblasts, some expression in T- and B-lymphocytes, and little or no expression in Burkitt's lymphoma cell lines. Expressed in many hormone-independent mammary carcinoma cell lines.,

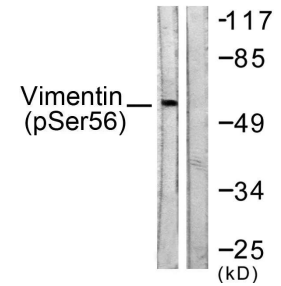
Form: liquid
Buffer: Liquid in PBS containing 50% glycerol, 0.5% protective protein and 0.02% New type preservative N.
Storage: Store at 4°C short term. Aliquot and store at -20°C long term. Avoid freeze/thaw cycles.



Enzyme-Linked Immunosorbent Assay (Phospho-ELISA) for Immunogen Phosphopeptide (Phospho-left) and Non-Phosphopeptide (Phospho-right), using Vimentin (Phospho-Ser56) Antibody



Immunohistochemistry analysis of paraffin-embedded human breast carcinoma, using Vimentin (Phospho-Ser56) Antibody. The picture on the right is blocked with the phospho peptide.



Western blot analysis of lysates from A549 cells treated with Nocodazole 1ug/ml 16h, using Vimentin (Phospho-Ser56) Antibody. The lane on the right is blocked with the phospho peptide.

For Research use only
IMMUNOLOGICAL SCIENCES