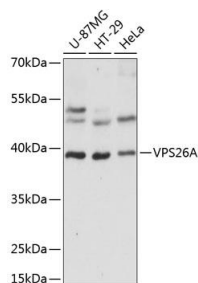


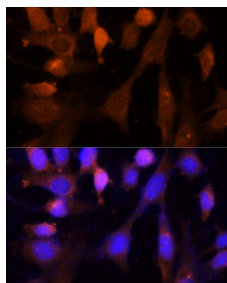
Cat. No:	AB-84398
Conjugate:	Unconj.
Size:	100ug
Clone:	POLY
Concentration:	1mg/ml
Host:	Rb
Isotype:	100 ug
Immunogen:	Recombinant fusion protein containing a sequence corresponding to amino acids 208-327 of human VPS26A.
Reactivity:	Hu, Ms, Rt
Applications:	Western Blot: 1:500 – 1:2000 Immunofluorescence: 1:50 – 1:200
Molecular Weight:	38kDa
Purification:	Aff. Pur.
Synonyms:	VPS26A;HB58;Hbeta58;PEP8A;VPS26

Background: This gene belongs to a group of vacuolar protein sorting (VPS) genes. The encoded protein is a component of a large multimeric complex, termed the retromer complex, involved in retrograde transport of proteins from endosomes to the trans-Golgi network. The close structural similarity between the yeast and human proteins that make up this complex suggests a similarity in function. Expression studies in yeast and mammalian cells indicate that this protein interacts directly with VPS35, which serves as the core of the retromer complex. Alternative splicing results in multiple transcript variants encoding different isoforms.

Form:	Liquid
Buffer:	PBS with 0.02% sodium azide, 50% glycerol, pH 7.3.
Storage:	Store at -20°C. Avoid freeze / thaw cycles.



Western blot analysis of extracts of various cell lines, using VPS26A antibody at 1:1000 dilution.
Secondary antibody: HRP Goat Anti-Rabbit IgG (H+L) at 1:10000 dilution.
Lysates/proteins: 25ug per lane.



Immunofluorescence analysis of NIH-3T3 cells using VPS26A Polyclonal Antibody at dilution of 1:100 (40x lens).
Blue: DAPI for nuclear staining.

Blocking buffer: 3% nonfat dry milk in
TBST.

Detection: ECL West Pico Plus.

Exposure time: 5s.

**For Research use only
IMMUNOLOGICAL SCIENCES**