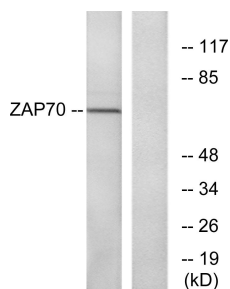
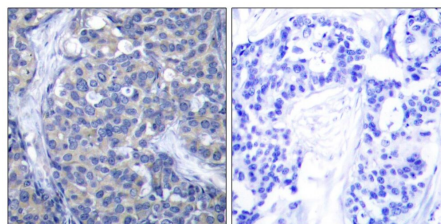


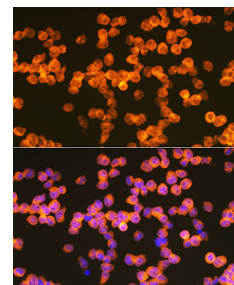
Cat. No:	AB-84734
Conjugate:	Unconjugated
Size:	100 ug
Clone:	POLY
Concentration:	1mg/ml
Host:	Rabbit
Isotype:	IgG
Immunogen:	The antiserum was produced against synthesized peptide derived from human ZAP-70. AA range:286-335
Reactivity:	Human, Mouse, Rat
Applications:	Western Blot: 1/500 - 1/2000 Immunohistochemistry: 1/100 - 1/300 Immunofluorescence: 1/200 - 1/1000 ELISA: 1/10000
Molecular Weight:	70kDa
Purification:	Affinity purification
Synonyms:	ZAP70; SRK; Tyrosine-protein kinase ZAP-70; 70 kDa zeta-chain associated protein; Syk-related tyrosine kinase
Background:	Zeta chain of T cell receptor associated protein kinase 70(ZAP70) Homo sapiens This gene encodes an enzyme belonging to the protein tyrosine kinase family, and it plays a role in T-cell development and lymphocyte activation. This enzyme, which is phosphorylated on tyrosine residues upon T-cell antigen receptor (TCR) stimulation, functions in the initial step of TCR-mediated signal transduction in combination with the Src family kinases, Lck and Fyn. This enzyme is also essential for thymocyte development. Mutations in this gene cause selective T-cell defect, a severe combined immunodeficiency disease characterized by a selective absence of CD8-positive T-cells. Two transcript variants that encode different isoforms have been found for this gene.
Form:	Liquid
Buffer:	Liquid in PBS containing 50% glycerol, 0.5% BSA and 0.02% sodium azide.
Storage:	Store at -20°C. Avoid repeated freeze-thaw cycles.



Western blot analysis of lysates from Jurkat cells, using ZAP-70 Antibody. The lane on the right is blocked with the



Immunohistochemistry analysis of paraffin-embedded human breast carcinoma tissue, using ZAP-70 Antibody. The picture on the right is blocked with the synthesized peptide.



Immunofluorescence analysis of Jurkat cells using ZAP70 Rabbit pAb at dilution of 1:100 (40x lens). Blue: DAPI

synthesized peptide.

for nuclear staining.

**For Research use only
IMMUNOLOGICAL SCIENCES**