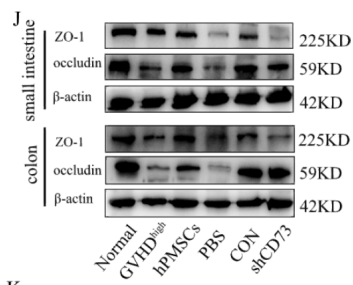
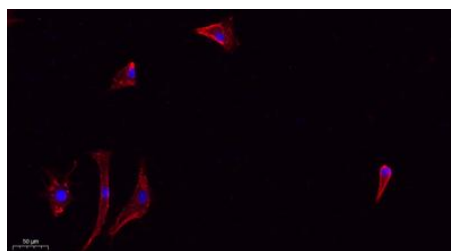


Cat. No:	AB-E16271
Conjugate:	Unconjugated
Size:	100 ug
Clone:	POLY
Concentration:	1mg/ml
Host:	Rabbit
Isotype:	IgG
Immunogen:	Synthesized peptide derived from part region of human protein.AA1600-1700.
Reactivity:	Human;Mouse
Applications:	Western Blot: 1:500-2000 Immunofluorescence: 1:100-300 ELISA 1:5000-20000
Molecular Weight:	192kD
Purification:	The antibody was affinity-purified from rabbit antiserum by affinity-chromatography using epitope-specific immunogen.
Background:	This gene encodes a protein located on a cytoplasmic membrane surface of intercellular tight junctions. The encoded protein may be involved in signal transduction at cell-cell junctions. Alternative splicing of this gene results in multiple transcript variants.
Form:	Liquid
Buffer:	Liquid in PBS containing 50% glycerol, 0.5% BSA and 0.02% sodium azide.
Storage:	Store at -20°C. Avoid repeated freeze-thaw cycles.



Human placental mesenchymal stromal cells modulate IFN- γ and IL-10 secretion by CD4⁺T cells via CD73, and alleviate intestinal damage in mice with graft-versus-host disease.



Immunofluorescence analysis of A549. 1,primaryAntibody(red) was diluted at 1:200(4°C overnight). 2, Goat Anti Rabbit IgG (H&L) - Alexa Fluor 594 Secondaryantibody was diluted at 1:1000(room temperature,50min).3, Picture B: DAPI(blue) 10min.

**For Research use only
IMMUNOLOGICAL SCIENCES**