

Brain Derived Neurotrophic Factor (BDNF)

Primary Antibodies

Cat. No	Antigen	Host	Clone	Isotype	Applications	Q.ty	Species
MAB-10502	BDNF	Ms	IS.7	IgG1	ELISA, IF, IHC (F), ICC	100 ug	Hu, Ms, Rt, Gp
AB-82598	BDNF	Rb	POLY	IgG	WB, IHC (P), IHC (F), IF	100 ug	Hu, Ms, Rt
MAB-94588	BDNF	Ms	BEH-2	IgG1	WB, IHC, ICC, IF	100 ug	Hu, Ms, Rt
AB-83595	BDNF*	Rb	POLY	IgG	WB, IHC(P)	100 ug	Hu, Ms, Rt

*(Mature Form & Precursor Form)

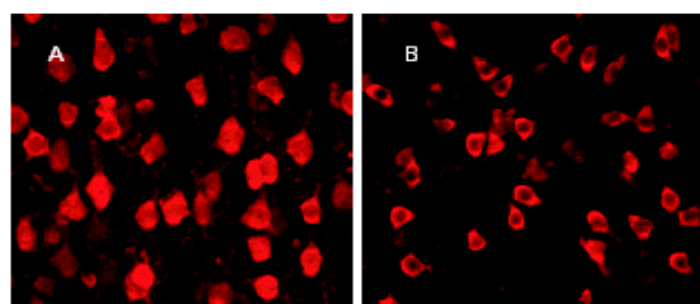


FIG.1 MAB-10502 BDNF immunostaining in the rat cortex (a) and striatum (b).

Dot.ssa F. Fusco - D.ssa C. Giampà Fondazione Santa Lucia Lab. Neuroanatomy

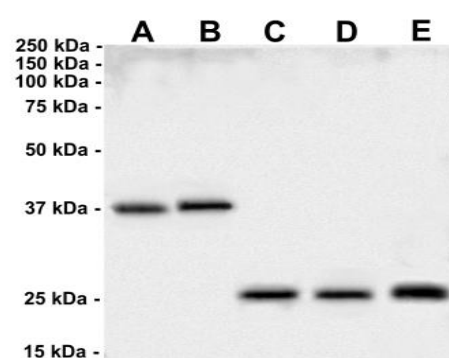


FIG.2 AB-82598 - Western Blot A: Human primary keratinocytes 38.4 kDa
B: Human primary fibroblasts 38.7 KDa
C: Mouse brain Lysate 28.2 kDa
D: Rat brain Lysate 27.8 kDa
E: Purified recombinant BDNF 29.1 kDa

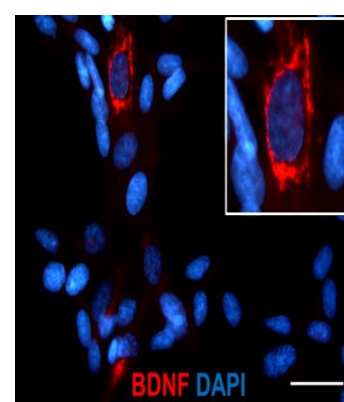
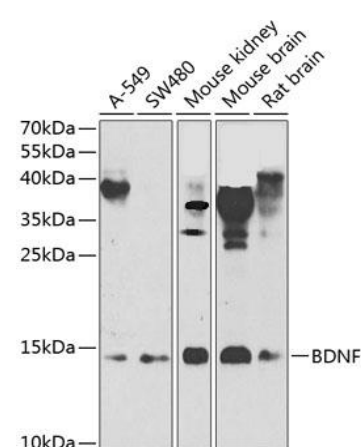


FIG.3 AB-82598 - Immunofluorescence of Enteric Nervous System cells (ENSc)



AB-83595 FIG. 4 Western blot analysis of extracts of various cell lines, using BDNF antibody at 1:1000 dilution.

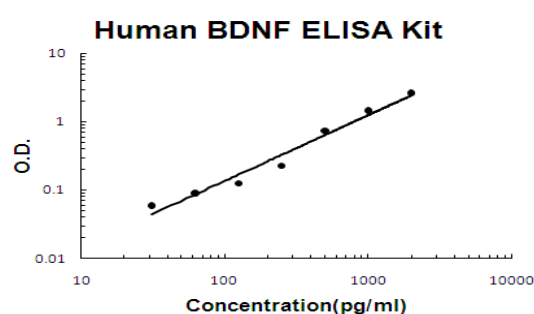
FIG.2 & FIG.3 by courtesy of Prof.Rosa Di Liddo, Dr. Sandra Schrenk, Dr.Thomas Bertalot University of Padova Department of Pharmaceutical and Pharmacological

Growth Factors

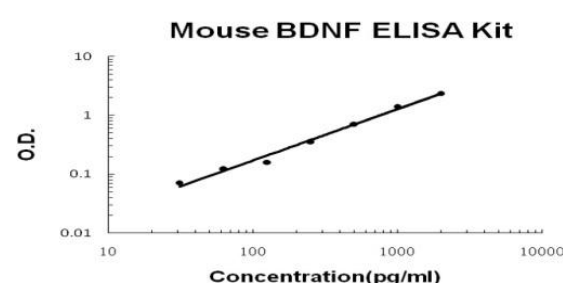
Cat. N°	Antigen	Q.ty	Species
GRF-10536	BDNF	10 ug	Hu
GRF-10751	BDNF	10 ug	Ms
GRF-10750	Pro BDNF	10 ug	Hu

Elisa Kits

Code	Description	Range	Sensitivity	Species	Size
IK10144	Human / BDNF Elisa Kit	31.2pg/ml-2000pg/ml	< 2pg/ml	Human	96 WELLS
IK10146	Mouse BDNF Elisa Kit	31.2pg/ml-2000pg/ml	< 2pg/ml	Mouse	96 WELLS
IK10145	Rat BDNF Elisa Kit	31.2pg/ml-2000pg/ml	< 2pg/ml	Rat	96 WELLS



IK-10144 Mouse BDNF ELISA Kit standard curve

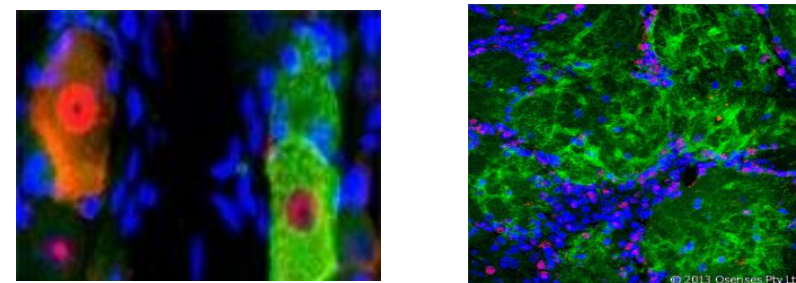


IK-10146 Mouse BDNF ELISA Kit standard curve

Primary Antibodies

Cat. No	Antigen	Host	Clone	Isotype	Applications	Q.ty	Species
AB-10596	NGF beta (2,5S Nerve Growth Factor)	Gt	POLY	IgG	IHC(F)	100 ul	Ms, Rt, Hu, Av
AB-90240	NGF beta (2,5S Nerve Growth Factor)	Rb	POLY	IgG	WB, IHC(P),IF	100 ug	Hu, Ms, Rt
AB-10180	NGF beta Precursor	Rb	POLY	IgG	WB, IHC	100 ul	Hu, Rt, Ms
MAB-10183	NGF p75 Receptor	Ms	192	IgG	IHC, ELISA, WB	100 ug	Rt
MAB-11002	NGF p75 Receptor	Ms	ME20.4	IgG1	IHC(P), ICC, WB, IP, RIA	100 ug	Hu, Pm, Rb, Sh, Dq, Ct.
AB-10022	NGF p75 Receptor (Cytoplasmatic Domain)	Rb	POLY	IgG	IHC, WB	100 uL	Hu, Ms, Rt
AB-11002	NGF p75 Receptor (Extracellular Domain)	Rb	POLY	IgG	IHC, WB	100 uL	Hu, Ms, Rt

FIG. 1. & 2. IF on rat trigeminal using Mouse monoclonal antibody to Rat p75NTR using MAB-10183



Growth Factors

Cat. N°	Antigen	Q.ty	Species
GRF-10571	Nerve Growth Factor beta	20 ug	Hu
GRF-10131	Nerve Growth Factor beta	20 ug	Ms
GRF-10130	Pro-Nerve Growth Factor	10 ug	Hu
GRF-10749	NGFR Nerve Growth Factor Receptor Human Recombinant	10 ug	Hu

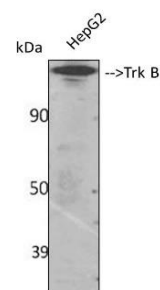
Elisa Kits

Code	Description	Range	Sensitivity	Species	Size
IK4169	Human NGF/NGFβ Elisa Kit	15.6pg/ml-1000pg/ml	< 1pg/ml	Human	96 WELLS
IK4220	Mouse NGF/NGFβ Elisa Kit	31.2pg/ml-2000pg/ml	< 1pg/ml	Mouse	96 WELLS
IK4245	Rat NGF/NGFβ Elisa Kit	15.6pg/ml-1000pg/ml	< 1pg/ml	Rat	96 WELLS

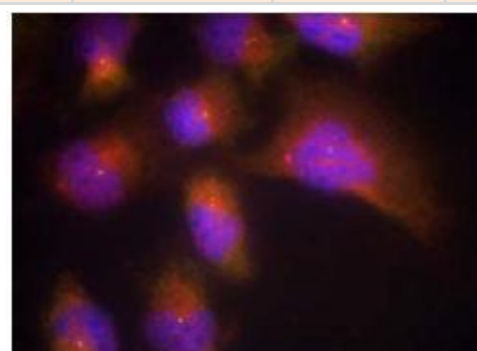
Tyrosine Receptor Kinase B (TRKB)

Primary Antibodies

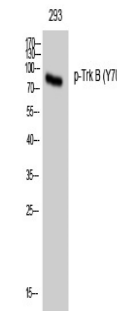
Cat. No	Antigen	Host	Clone	Isotype	Applications	Q.ty	Species
AB-83780	TrKB	Rb	POLY	IgG	WB, IHC(p), EIA	100 ug	Hu, Ms, Rt
AB-80447	TrKB (NT)	Rb	POLY	IgG	IHC, WB	100 ul	Rt, Ms
ABP-11157	Phospho-TRKB-Y516	Rb	Poly	IgG	WB, IHC(P), ELISA	100 ug	Hu, Ms, Rt
ABP-11158	Phospho-TRKB-Y706	Rb	Poly	IgG	WB,IHC(P),IF, ELISA	100 ug	Hu, Ms, Rt



AB-83780 Western Blot (WB) analysis of specific cells using Trk B Polyclonal Antibody.



AB-80447 TRKB (NT) Polyclonal Antibody



ABP-11158 Western Blot (WB) analysis of 293 cells using Phospho-Trk B (Y706) Polyclonal Antibody.

Elisa Kits

Code	Description	Range	Sensitivity	Species	Size
IK4292	Mouse Trk B Elisa Kit	93.8pg/ml-6000pg/ml	< 5pg/ml	Mouse	96 WELLS

Distributed by:



SOCIETÀ ITALIANA CHIMICI
Life Sciences

Via Rio nell'Elba, 140 / 00138 Rome - ITALY
Phone: +39 06-8818936/8800211 - Fax: +39 06-8815319
Email: info@sichim.com Web-Site: www.sichim.com