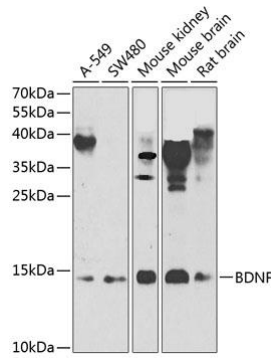
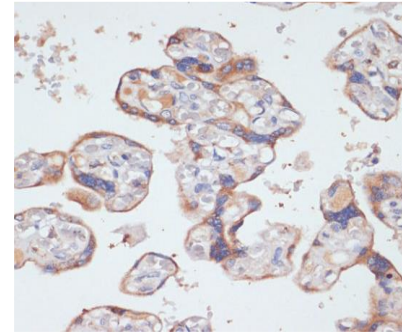


Neurosciences Antibodies for Parkinson Disease

Cat. No	Antigen	Host	Clone	Isotype	Applications	Q.ty	Species	€
MAB-10502	BDNF	Ms	IS.7	IgG1	ELISA,IF,IHC(F),ICC	100 ug	Hu, Ms, Rt, Gp	280
AB-83595	BDNF (Mature Form)	Rb	POLY	IgG	WB,IHC (P),IF	100 ug	Hu,Ms,Rt	295

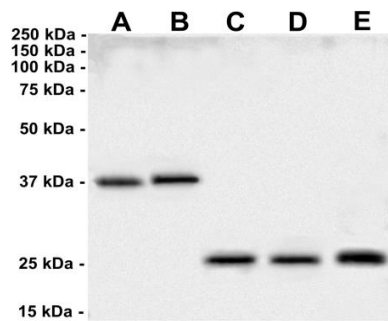


AB-83595 BDNF (Mature Form) Western blot analysis of extracts of various cell lines, using BDNF antibody at 1:1000 dilution.
 Secondary antibody: HRP Goat Anti-Rabbit IgG (H+L) at 1:10000 dilution.
 Lysates/proteins: 25ug per lane.
 Blocking buffer: 3% nonfat dry milk in TBST.
 Detection: ECL West Pico Kit.
 Exposure time: 90s

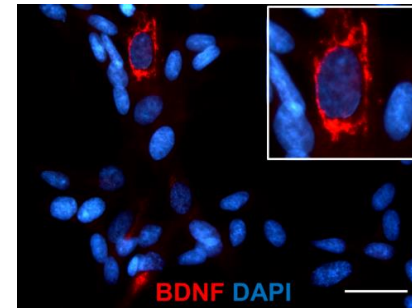


AB-83595 BDNF (Mature Form) Immunohistochemistry of paraffin embedded human placenta using BDNF antibody at dilution of 1:100 (40x lens).

Cat. No	Antigen	Host	Clone	Isotype	Applications	Q.ty	Species	€
AB-82598	BDNF Precursor	Rb	POLY	IgG	WB,IHC (P),IHC (F),IF	100 ug	Hu,Ms,Rt	300



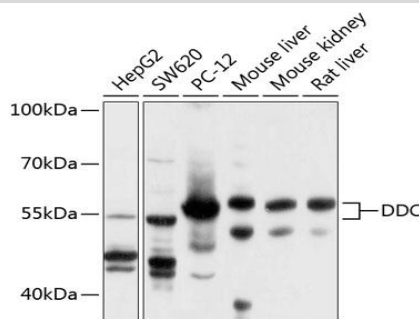
AB-82598 BDNF Precursor A:Hu- primary keratinocytes 38.4 kDa
 B:Hu- primary fibroblasts 38.7 kDa
 C:Ms brain Lysate 28.2 kDa
 D:Rat brain Lysate 27.8 kDa
 E:Purified recombinant BDNF 29.1 kDa



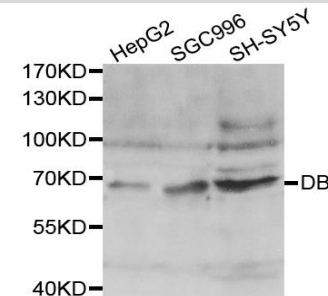
AB-82598 BDNF Precursor Immunofluorescence of Enteric Nervous System cells (ENSc) isolated from post-natal rat myenteric plexus. Bar 25µm. Data were acquired using DMI4000B Microscope (Leica microsystems)

Prof. Rosa Di Liddo , Dr. Thomas Bertalot, Dr. Sandra Schrenk - University of Padova

Cat. No	Antigen	Host	Clone	Isotype	Applications	Q.ty	Species	€
AB-83411	Dopamine Decarboxylase (DDC)	Rb	POLY	IgG	WB	100µg	Rt, Ms, Hu,	295
AB-82519	Dopamine Beta Hydroxylase (DBH)	Rb	POLY	IgG	WB	100ug	Hu, Ms, Rt	295

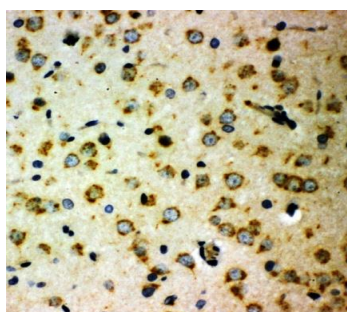


AB-83411 Dopamine Decarboxylase (DDC) Western blot analysis of extracts of various cell lines, using DDC antibody at 1:1000 dilution.

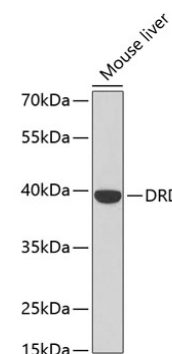


AB-82519 Dopamine Beta Hydroxylase (DBH) Western blot analysis of extracts of various cells, using DBH antibody

Cat. No	Antigen	Host	Clone	Isotype	Applications	Q.ty	Species	€
AB-90204	Dopamine Receptor D1	Rb	POLY	IgG	WB,IHC(P)	100 ug	Hu, Ms, Rt	295
AB-84253	Dopamine Receptor D1	Rb	POLY	IgG	WB, IF, ICC	100 ul	Hu, Ms, Rt	330
AB-82294	Dopamine Receptor D2	Rb	POLY	IgG	WB,IHC(P)	100 ug	Hu, Ms, Rt	295
AB-11173	Dopamine Receptor D2	Rb	POLY	IgG	IHC, ICC, WB	100 ul	Hu, Rt, Ms	330
AB-11177	Dopamine Receptor D2L	Rb	POLY	IgG	IHC, ICC, WB	100 ul	Hu, Rt, Ms	330
AB-11174	Dopamine Receptor D2S	Rb	POLY	IgG	IHC, ICC, WB	100 ul	Hu, Rt, Ms	330
AB-84254	Dopamine Receptor D3	Rb	POLY	IgG	WB, IF, ICC	100 ul	Hu, Rt, Ms	330
AB-83412	Dopamine Receptor D4	Rb	POLY	IgG	IHC, WB	100 ug	Hu, Ms	295
AB-84255	Dopamine Receptor D4	Rb	POLY	IgG	WB, IF, ICC	100 ul	Hu, Rt, Ms	330
AB-83465	Dopamine Receptor D5	Rb	POLY	IgG	WB, IHC, IF	100 ug	Hu, Ms, Rt	295
AB-84256	Dopamine Receptor D5	Rb	POLY	IgG	WB, IF, ICC	100 ul	Hu, Rt, Ms	330

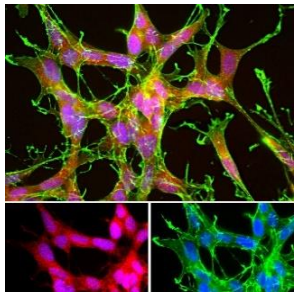


AB-82294 Anti-Dopamine D2 Receptor IHC(P) of Rat Brain Tissue using Dopamine Receptor D2 antibody

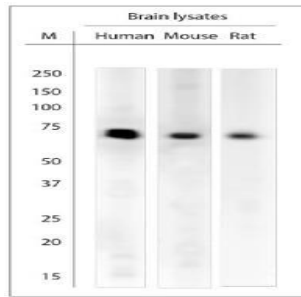


AB-83412 Dopamine Receptor D4 Western blot analysis of extracts of Mouse liver tissue, using DRD4 antibody.

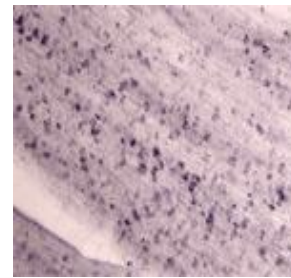
Cat. No	Antigen	Host	Clone	Isotype	Applications	Q.ty	Species	€
AB-82520	Dopamine Transporter Extracellular Loop 2	Rb	POLY	IgG	WB	100 ul	Rt, Ms, Hu, Dg, ZbF	360
AB-83373	Dopamine Transporter	Rb	POLY	IgG	WB, IHC, IP	100 ug	Hu, Ms, Rt	295
AB-90242	Neurotrophin 3 (NT3)	Rb	POLY	IgG	WB, IHC(P)	100 ug	Hu, Ms, Rt	295
AB-82834	Parkin	Rb	POLY	IgG	WB,IHC-P,ICC	200 ug	Hu, Ms, Rt	360
MAB-94084	PARK7/DJ1	Ms	4H4	IgG1	Wb, ICC, IF, IHC	100 ug	Hu, Rt, Ms, Ho, Cw, Pg, Ch	295
AB-83905	PARK7/DJ1	Rb	POLY	IgG	WB, IF, IHC	100 ug	Hu Rt Ms,Cw, Pg, Dg	295
MAB-10681	PSD-95 MAGUK Scaffold Protein	Ms	k28/43	IgG2a	WB, IHC, IP	100 ug	Hu, Ms, Rt	360
AB-82416	PSD-95 MAGUK Scaffold Protein	Rb	POLY	IgG	WB, IHC(P), IF, IP	100 ug	Hu, Ms, Rt	295
AB-83468	Synapsin 1	Rb	POLY	IgG	WB, IHC(P) , IF	100 ug	Hu, Ms, Rt	295
AB-J2857	Synapsyn 2	Rb	POLY	IgG	WB	100 ug	Hu, Ms, Rt	295
AB-J2858	Synapsyn 3	Rb	POLY	IgG	WB	100 ug	Hu, Ms, Rt	295
MAB-94359	Synapsyn 3	Ms	L125/121	IgG1	WB, ICC, IHC	100 ug	Hu, Ms, Rt	390
ABP-0244	Phospho-Synapsin 1 (Ser9)	Rb	POLY	IgG	WB, IF	100 ul	Hu, Ms, Rt	300
ABP-0458	Phospho-Synapsin 1 (Ser549)	Rb	POLY	IgG	WB	100 ul	Hu, Ms, Rt	300



AB-83905 Immunofluorescent analysis of SH-SY5Y cells stained with rabbit pAb against DJ1/Park7

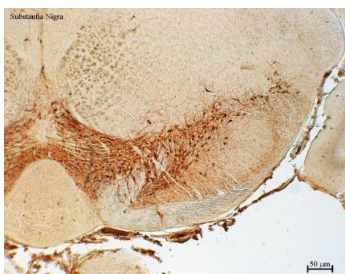


AB-83468 Synapsin 1 Western Blot on brain lysates using Synapsin 1 Antibody

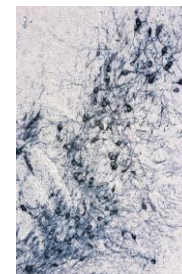


AB-J2858 IHC on rat sciatic nerve using Synapsin 3 Antibody

Cat. No	Antigen	Host	Clone	Isotype	Applications	Q.ty	Species	€
MAB-10275	Synaptophysin	Ms	2D2	IgG1	WB, IHC(P)	100 ug	Hu, Rt	295
AB-84155	Synaptophysin	Rb	poly	IgG	WB, IP, IHC(p),IF	100 ug	Hu, Ms, Rt	295
AB-82642	Synaptophysin	Rb	POLY	IgG	WB, IHC, IF	100 ug	Hu, Ms, Rt	295
AB-83800	Synaptopodin	Rb	POLY	IgG	WB, IHC, ELISA	100 ug	Hu, Ms, Rt	295
AB-12022	Synuclein Alpha	Rb	POLY	IgG	WB, IHC, IF	100 ug	Hu, Ms, Rt	295
MAB-94093	Synuclein Alpha	Ms	2A7	IgG1	WB, IF, ICC, IHC	100 ug	Hu, Ho, Cw, Pg, Ch, Rt, Ms	295
AB-83921	Synuclein Alpha	Ch	POLY	IgY	WB, IF, ICC, IHC	100 ug	Hu, Ho, Cw, Pg, Ch, Rt, Ms	295
AB-12022	Synuclein Alpha	Rb	POLY	IgG	WB, IHC(P), IF	100 ug	Hu, Ms, Rt	295
MAB-94576	Synuclein Alpha	Ms		IgG1	WB, IHC(P)	100 ug	Hu, Ms, Rt	295
ABP-0450	Phospho-Synuclein Alpha (Ser-129)	Rb	POLY	IgG	WB	100 ul	Hu, Ms, Rt	300
ABP-0241	Phospho-Synuclein Alpha (Tyr-125)	Rb	POLY	IgG	WB, IF	100 ul	Hu	300
ABP-0451	Phospho-Synuclein Alpha (Tyr-133)	Rb	POLY	IgG	WB, IF	100 ul	Hu, Ms, Rt	300
ABP-0254	Phospho-Synuclein Alpha (Tyr-136)	Rb	POLY	IgG	WB, IF	100 ul	Hu, Ms, Rt	300
AB-82150	TrKB	Rb	POLY	IgG	WB	100 ug	Hu, Ms, Rt	295
ABP-9240	Phospho-Trk B (Y516)	Rb	Poly	IgG	WB, IHC-p, ELISA	100 ug	Hu, Ms, Rt	275
AB-83780	TrKB (NT)	Rb	POLY	IgG	IHC, WB	100 ul	Hu, Ms, Rt	295
MAB-10263	Tyrosine Hydroxylase	Ms	TH-100	IgG1	WB, IHC(P), IHC(F)	100 ug	Hu,Rb, Rt,Ms	295
AB-10312	Tyrosine Hydroxylase	Rb	POLY	IgG	WB, IHC(P), IHC(F)	100 ul	Hu, Ms, Rt	295
AB-80649	Tyrosine Hydroxylase	Gt	POLY	IgG	IHC(F),IHC(P), WB	100 ul	Hu, Rt, Ms	250

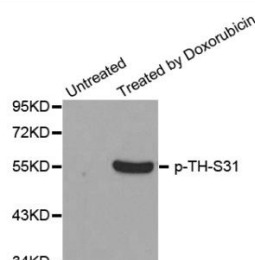


MAB-10263 Tyrosine Hydroxylase Immunohistochemical analysis of Rat Substantia Nigra using Tyrosine Hydroxylase Mono Ab performed by: Dr. Francesca Biagioni, lab. Neurobiology of Movement Disorders, I.R.C.C.S. INM Neuromed and Dr. Maria Teresa Calierno I.R.C.C.S. INM Neuromed.

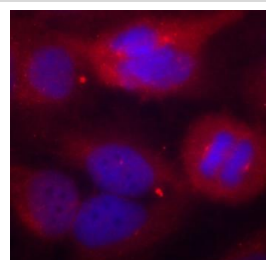


AB-10312 Tyrosine Hydroxylase IHC(P) on Mouse Brain Substantia Nigra using Tyrosine Hydroxylase Antibody

Cat. No	Antigen	Host	Clone	Isotype	Applications	Q.ty	Species	€
ABP-0461	Phospho-Tyrosine Hydroxylase (Ser19)	Rb	POLY	IgG	IF	100 ul	Rt	300
ABP-0210	Phospho-Tyrosine Hydroxylase (Ser31)	Rb	POLY	IgG	WB	100 ul	Hu Rt	300
ABP-0211	Phospho-Tyrosine Hydroxylase (Ser40)	Rb	POLY	IgG	IF	100 ul	Hu, Ms, Rt	300



ABP-0210 Phospho-Tyrosine Hydroxylase (Ser31) Western blot analysis of extracts from 293 cells, using Phospho-Tyrosine Hydroxylase (Ser31) antibody.



ABP-0211 Phospho-Tyrosine Hydroxylase (Ser40) Immunofluorescence staining of methanol-fixed Hela cells using Phospho-Tyrosine Hydroxylase (Ser40) antibody

Distributed by:

SIC SOCIETÀ ITALIANA CHIMICI
Life Sciences

Via Rio nell'Elba, 140 – Rome / ITALY
Phone +39 06-8818936 / 8800211 – Fax +39 06-8815319
Email info@sichim.com Web-Site www.sichim.com