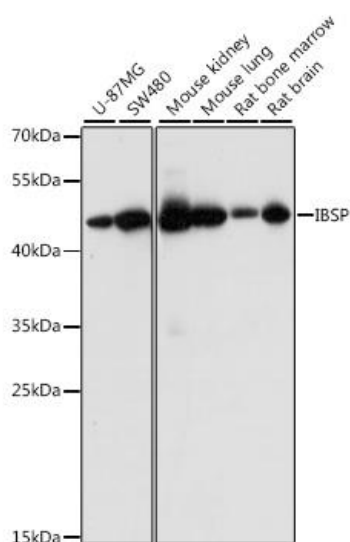


**AB-81521 IBSP Polyclonal Antibody****Size:** 100 ug**Concentration:** 1mg/ml**Source:** Rabbit**Isotype:** IgG**Purification method:** Affinity purification**Cross-reactivity:** Human, Mouse, Rat**Immunogen:** A synthetic peptide corresponding to a sequence within amino acids 1-100 of human IBSP**Synonyms:** IBSP;BNSP;BSP;BSP-II;SP-II.

Background: The protein encoded by this gene is a major structural protein of the bone matrix. It constitutes approximately 12% of the noncollagenous proteins in human bone and is synthesized by skeletal-associated cell types, including hypertrophic chondrocytes, osteoblasts, osteocytes, and osteoclasts. The only extraskelatal site of its synthesis is the trophoblast. This protein binds to calcium and hydroxyapatite via its acidic amino acid clusters, and mediates cell attachment through an RGD sequence that recognizes the vitronectin receptor.

Observed MW: 45kDa**Applications:** **Western Blot:** 1:500 - 1:2000

Storage: Store at -20°C. Avoid freeze / thaw cycles.
Buffer: PBS with 0.02% sodium azide, 50% glycerol, pH 7.3.



Western blot analysis of extracts of various cell lines, using IBSP antibody at 1:1000 dilution.

Secondary antibody: HRP Goat Anti-Rabbit IgG (H+L) at 1:10000 dilution.

Lysates/proteins: 25ug per lane.

Blocking buffer: 3% nonfat dry milk in TBST.

Detection: ECL West Pico Plus.

Exposure time: 1s.

For Research use only
IMMUNOLOGICAL SCIENCES

Web-site: www.immunologicalsciences.com - E-Mail: info@immunologicalsciences.com