

**AB-82599 Rabbit Anti-Becn1 Polyclonal Antibody**

**Size:** 100 ul  
**Concentration:** 1ug/ml  
**Isotype:** IgG  
**Host:** Rabbit  
**Immunogen:** Recombinant protein of human BECN1  
**Synonyms:** ATG6;VPS30;beclin1

**Background:** This gene encodes a protein that regulates autophagy, a catabolic process of degradation induced by starvation. The encoded protein is a component of the phosphatidylinositol-3-kinase (PI3K) complex which mediates vesicle-trafficking processes. This protein is thought to play a role in multiple cellular processes, including tumorigenesis, neurodegeneration and apoptosis. Alternative splicing results in multiple transcript variants.

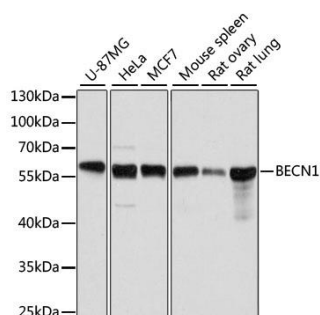
**Species Reactivity:** Human, Mouse, Rat

**Molecular Weight:** 60 kDa

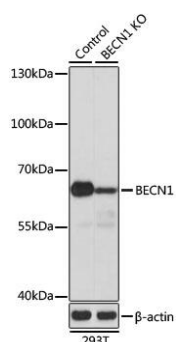
**Applications:** **Western Blot:** 1: 500-1:1000  
**Immunohistochemistry (paraffin-embedded tissues):** 1: 100  
**Immunofluorescence:** 1:100  
**Immunoprecipitation:** 1:100

**Buffer:** PBS with 0.02% sodium azide, 50% glycerol, pH7.3.

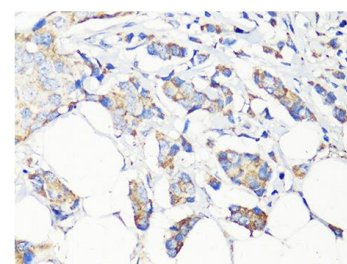
**Storage:** Store at +4°C for short term, at -20° C for 12 months. Avoid Freeze and Thaw Cycles.



Western blot analysis of extracts of various cell lines, using BECN1 antibody at 1:1000 dilution. Secondary antibody: HRP Goat Anti-Rabbit IgG (H+L) at 1:10000 dilution. Lysates/proteins: 25ug per lane. Blocking buffer: 3% nonfat dry milk in TBST. Detection: ECL West Pico. Exposure time: 5s.



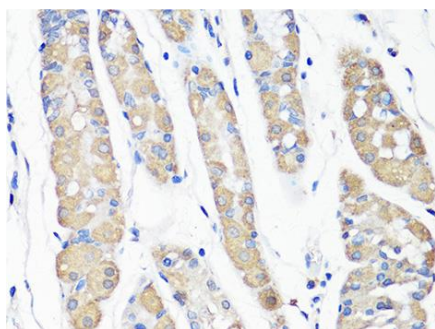
Western blot analysis of extracts from normal (control) and BECN1 knockout (KO) 293T cells, using BECN1 antibody at 1:1000 dilution. Secondary antibody: HRP Goat Anti-Rabbit IgG (H+L) at 1:10000 dilution. Lysates/proteins: 25ug per lane. Blocking buffer: 3% nonfat dry milk in TBST. Detection: ECL Basic Kit. Exposure time: 5s.



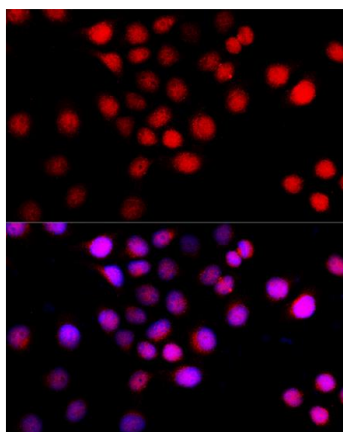
Immunohistochemistry of paraffin-embedded human breast cancer using BECN1 antibody at dilution of 1:100 (40x lens).

**For Research use only**  
**IMMUNOLOGICAL SCIENCES**

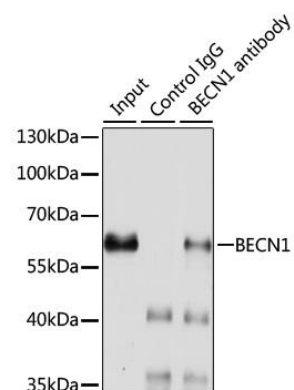
Web-site: [www.immunologicalsciences.com](http://www.immunologicalsciences.com) - E-Mail: [info@immunologicalsciences.com](mailto:info@immunologicalsciences.com)



Immunohistochemistry of paraffin-embedded human stomach using BECN1 antibody at dilution of 1:100 (40x lens).



Immunofluorescence analysis of HeLa cells using BECN1 antibody at dilution of 1:100 (40x lens). Blue: DAPI for nuclear staining.



Immunoprecipitation analysis of 200ug extracts of HeLa cells using 3ug BECN1 antibody. Western blot was performed from the immunoprecipitate using BECN1 antibody at a dilution of 1:1000.