

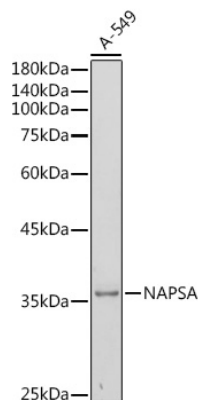


Product name:	NAPSA Rabbit pAb
Cat number:	AB-84404
Conjugate:	Unconjugated
Host:	Rabbit
Size:	100 ug
Concentration:	1mg/ml
Isotype:	IgG
Immunogen:	A synthetic peptide corresponding to a sequence within amino acids 321-420 of human NAPSA (NP_004842.1).
Reactivity:	Human,Mouse,Rat
Applications:	WB,1:100 - 1:500 IF/ICC,1:50 - 1:200
Molecular weight:	38kDa
Purification:	Affinity purification
Background:	This gene encodes a member of the peptidase A1 family of aspartic proteases. The encoded preproprotein is proteolytically processed to generate an activation peptide and the mature protease. The activation peptides of aspartic proteinases function as inhibitors of the protease active site. These peptide segments, or pro-parts, are deemed important for correct folding, targeting, and control of the activation of aspartic proteinase zymogens. The encoded protease may play a role in the proteolytic processing of pulmonary surfactant protein B in the lung and may function in protein catabolism in the renal proximal tubules. This gene has been described as a marker for lung adenocarcinoma and renal cell carcinoma.
Form:	liquid
Buffer:	PBS with 0.02% sodium azide,50% glycerol,pH7.3.
Storage:	Store at -20°C. Avoid freeze / thaw cycles.

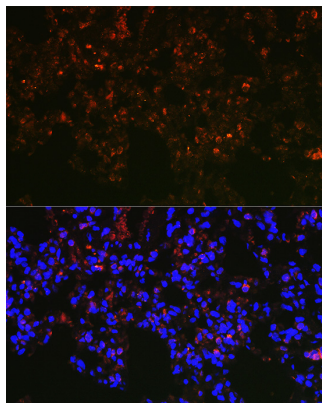
For Research Use Only

IMMUNOLOGICAL SCIENCES

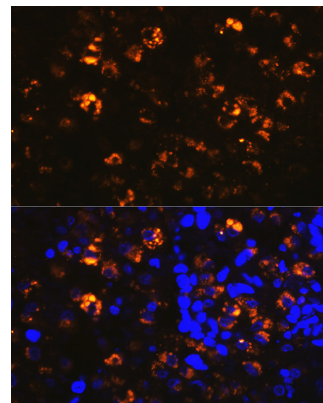
Web-site: <https://immunologicalsciences.com> - E-mail: info@immunologicalsciences.com



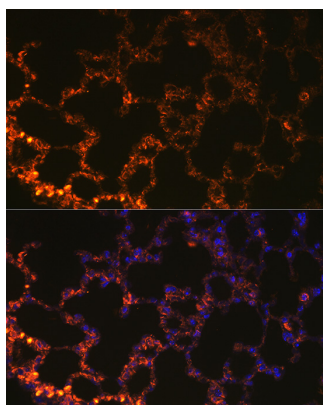
Western blot analysis of extracts of A-549 cells, using NAPSA antibody at 1:500 dilution. Secondary antibody: HRP Goat Anti-Rabbit IgG (H+L) at 1:10000 dilution. Lysates/proteins: 25µg per lane. Blocking buffer: 3% nonfat dry milk in TBST. Detection: ECL West Pico Plus. Exposure time: 180s.



Immunofluorescence analysis of rat lung cells using NAPSA Rabbit pAb at dilution of 1:100 (40x lens). Blue: DAPI for nuclear staining.



Immunofluorescence analysis of human lung cancer cells using NAPSA Rabbit pAb at dilution of 1:100 (40x lens). Blue: DAPI for nuclear staining.



Immunofluorescence analysis of mouse lung cells using NAPSA Rabbit pAb at dilution of 1:100 (40x lens). Blue: DAPI for nuclear staining.

**For Research Use Only
IMMUNOLOGICAL SCIENCES**

Web-site: <https://immunologicalsciences.com> - E-mail: info@immunologicalsciences.com