

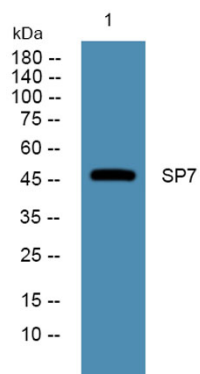


Product name:	SP7 rabbit pAb
Cat number:	AB-J2773
Conjugate:	unconjugated
Host:	Rabbit
Size:	100 ug
Clone:	Polyclonal
Concentration:	1mg/ml
Isotype:	IgG
Immunogen:	Synthesized peptide derived from human protein . at AA range: 280-360
Reactivity:	Human;Mouse
Applications:	WB 1:500-2000 ELISA 1:5000-20000
Molecular weight:	47kD
Purification:	The antibody was affinity-purified from rabbit antiserum by affinity-chromatography using epitope-specific immunogen.
Background:	This gene encodes a member of the Sp subfamily of Sp/XKLF transcription factors. Sp family proteins are sequence-specific DNA-binding proteins characterized by an amino-terminal trans-activation domain and three carboxy-terminal zinc finger motifs. This protein is a bone specific transcription factor and is required for osteoblast differentiation and bone formation.[provided by RefSeq, Jul 2010],
Form:	liquid
Buffer:	Liquid in PBS containing 50% glycerol, 0.5%BSAand0.02% sodium azide.
Storage:	Store at -20°C. Avoid repeated freeze-thawcycles

For Research Use Only

IMMUNOLOGICAL SCIENCES

Web-site: <https://immunologicalsciences.com> - E-mail: info@immunologicalsciences.com



Western blot analysis of lysates from
HCT116 cells, primary antibody was
diluted at 1:1000, 4°over night

For Research Use Only
IMMUNOLOGICAL SCIENCES

Web-site: <https://immunologicalsciences.com> - E-mail: info@immunologicalsciences.com