

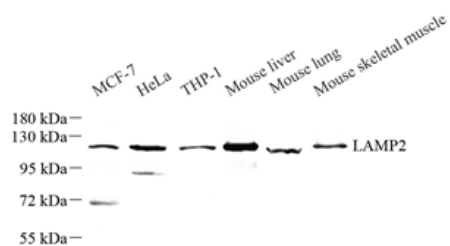


<b>Product name:</b>	Anti-LAMP2 Rabbit Polyclonal Antibody
<b>Cat number:</b>	ABS11848
<b>Conjugate:</b>	unconjugated
<b>Host:</b>	Rabbit
<b>Size:</b>	100 µL
<b>Synonyms:</b>	LAMP2, CD107b, LAMP-2, LAMPB, LGP110, lysosomal associated membrane protein 2, LGP-96
<b>Clone:</b>	POLY
<b>Concentration:</b>	1mg/ml
<b>Isotype:</b>	IgG
<b>Immunogen:</b>	KLH conjugated Synthetic peptide corresponding to Mouse LAMP2
<b>Reactivity:</b>	Human, Mouse
<b>Applications:</b>	Western Blot: 1: 500-1: 1000
<b>Molecular Weight:</b>	120 kDa
<b>Purification:</b>	Affinity purification
<b>Background:</b>	Implicated in tumor cell metastasis. May function in protection of the lysosomal membrane from autodigestion, maintenance of the acidic environment of the lysosome, adhesion when expressed on the cell surface (plasma membrane), and inter-and intracellular signal transduction. Protects cells from the toxic effects of methylating mutagens.
<b>Form:</b>	Liquid
<b>Buffer:</b>	PBS with 0.02% sodium azide, 100 µg/ml BSA and 50% glycerol.
<b>Storage:</b>	Store at -20 °C for one year. Avoid repeated freeze/ thaw cycles.

**For Research Use Only**

**IMMUNOLOGICAL SCIENCES**

Web-site: <https://immunologicalsciences.com> - E-mail: [info@immunologicalsciences.com](mailto:info@immunologicalsciences.com)



Western blot analysis of LAMP2 at  
dilution of 1: 500

**For Research Use Only**

**IMMUNOLOGICAL SCIENCES**

Web-site: <https://immunologicalsciences.com> - E-mail: [info@immunologicalsciences.com](mailto:info@immunologicalsciences.com)