

INDICE

ECL WEST PICO	2
ECL WEST DURA PLUS	2
ECL WEST FEMTO PLUS	3
PRESTAINED PROTEIN LADDERS	4
TRANSFER MEMBRANES	5
X-RAY FILM	6
REAGENTS FOR WESTERN BLOT & ELECTROPHORESIS	6
WESTERN BLOT EXTRACTION KITS	6
HRP CONJUGATED SECONDARY ANTIBODIES	7
BLOCKING	7
PROTEIN QUANTIFICATION ASSAY KITS	7
VERTICAL ELECTROPHORESIS SYSTEM	8
DECOLORING SHAKER	9
DISPOSABLE GLOVES	10

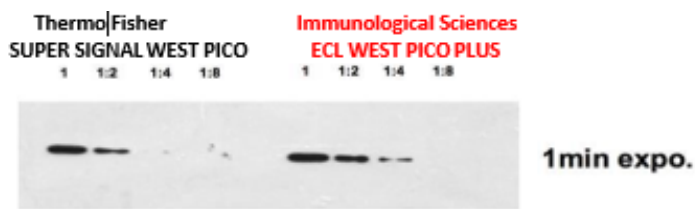
ECL WEST PICO

Specificity: It can detect **low-picogram and high-femtogram** amount of antigen

Working solution stability: 3 days

Primary antibody (con.1mg/mL): 100-500ng/mL – (1:2,000-1:10,000)

Duration of the signal : is **6~12h** if the conc. of the secondary antibody is 10–50 ng/mL-(1:20,000-1:100,000)



Cat N°	Description	Quantity	€ Price
ECL-2001	ECL West Pico Plus Substrate	2x100 ml (2000 cm2)	80,00

ECL WEST DURA PLUS

Specificity: It can detect **high and medium femtogram** amount of antigens

Working solution stability : 3 days

Primary antibody (conc.1mg/mL):20-1000 ng/mL : 1:1,000-1:50,000

Duration of the signal : is **12~24h** if the conc. of the secondary antibody is 4–20 ng/mL(1:50,000-1:250,000)



Cat N°	Description	Quantity	€ Price
ECL-2003	ECL West Dura Plus Substrate	2 x 50 ml (1000 cm2)	230,00

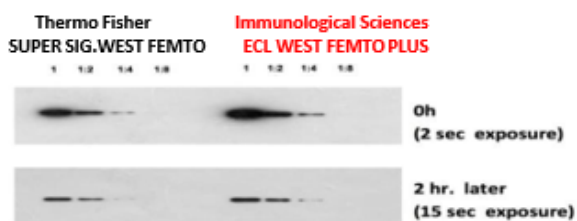
ECL WEST FEMTO PLUS

Specificity: It can detect **low femtogram** amount of antigens

Working solution stability: 3 days

Primary antibody (conc.1mg/mL):5-100 ng/mL - 1:10,000-1:200,000

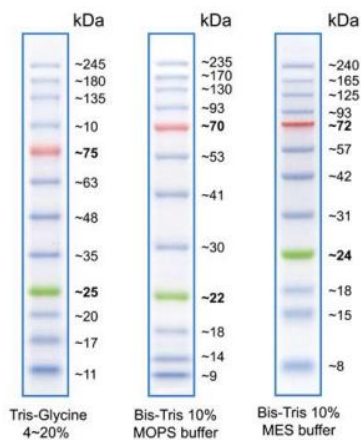
Duration of the signal : is **6~12h** if the conc. of the secondary antibody is 2–10 ng/mL(1:100,000-1:500,000)



Cat N°	Description	Quantity	€ Price
EC-2002	ECL West Femto Plus Substrate	2 x 50 ml (1000 cm ²)	270,00

PRESTAINED PROTEIN LADDERS

During western blotting, prestained and fluorescent protein ladders can be used for approximate determination of molecular weight, monitoring the progress of electrophoresis runs, and/or estimating the efficiency of protein transfer to the membrane during western blotting. We offer several prestained and fluorescent protein ladders supplied in a ready-to-use format to facilitate easy protein analysis during gel electrophoresis and fluorescent western blotting.



WB-RR-119-5 (8-245 kDa)

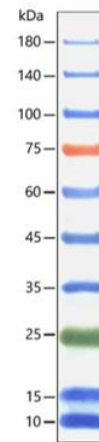
Features:

- Sharp and stable
- Two reference bands – red at ~75 kDa and green at ~25 kDa.
- 3 µl or 5 µl per loading for clear visualization during electrophoresis on 15-well or 10-well mini-gel, respectively
- 1,5 µl to 2,5 µl per well for general Western transferring
- Apply more for thicker (>1,5mm) or larger gel

Contents: 0.1-0.4 mg/ml of each protein in 20 mM Trisphosphate (pH 7.5 at 25°C) 2% SDS. 1mM Dithiothreitol, 3,6M Urea and 15% glycerol

Quality Control: Tested in SDS Polyacrylamide Gel Electrophoresis & Western Blot

Storage: At 4°C for 3 months and at -20°C for 24 months



WB-RR-120-5 (10-180 kDa)

Features:

- Ready to use: Do NOT heat, dilute, or add reducing agents before loading
- Reference bands: 75kDa (red), 25kDa (green)
- Loading Volume: 3-5 uL/well for mini gel; 1.5-2.5 uL/ well for Western transfer; 6-10 uL/ well for large gel
- Type of membranes: PVDF, nylon, or nitrocellulose

Contents: Approximately 0.1 ~0.4 mg/ml of each protein in the buffer (20 mM Tris-phosphate (pH 7.5 at 25°C), 2 % SDS, 0.2 mM Dithiothreitol, 3.6 M Urea, and 15 % (v/v) Glycerol).

Quality Control: Tested in SDS Polyacrylamide Gel Electrophoresis &

TRANSFER MEMBRANES

Nitrocellulose Membranes

The Immunological sciences **Nitrocellulose membranes** with 0.45µm pore size is the general lab standard for most protein and nucleic acid applications; it ensures high retention of samples between 13kD-400kD. Nitrocellulose Transfer Membrane with 0.22µm pore size ensures high retention of small samples below 20 kD.

Both the membranes have high binding, low background and high retention of small proteins, the protein binding capacity reaches 125µg/cm².

Filter Membrane Roll: 30cm x 3m



Nitrocellulose Membranes

Cod.No	WB-RR-113	WB-RR-114
Pore Size	0.22µm	0.45µm
Price	€ 298,00	€ 298,00

PVDF Membranes

The Immunological Sciences **PVDF Transfer Membrane** with 0.22µm pore size is designed for protein sequencing applications, protein binding capacity (over 200 µg/cm²) for easy signal detection. PVDF Transfer Membrane with 0.45µm pore size is designed for western blotting and protein dot-blotting applications, protein binding capacity reaches 125µg/cm². High protein retention even after harsh wash steps. Extremely low backgrounds provide clear signals and sharp bands. A single blot can be sequentially analyzed with multiple antibodies by stripping the first antibody from the blot and incubating with another.

Filter Membrane Roll: 30cm x 3m

PVDF Membranes

Cod.No	WB-RR-115	WB-RR-116
Pore Size	0.22µm	0.45µm
Price	€ 385,00	€ 385,00

X-RAY FILM - Developing and Fixing Kit

Cat N°	Description	Quantity	€ Price
WBX-001	Chemiblu X RAY FILM 8 x 10 inches	100 pz	260
WBX-002	Chemiblu X RAY FILM 5 x 7 inches	100 pz	185
WB-DEV-FIX-500	WB Developing and Fixing Kit	500 ml	100

REAGENTS FOR WESTERN BLOT & ELECTROPHORESIS

Cat N°	Buffers	Quantity	€ Price
ISP6154	BSA Bovine Serum Albumin	100 g	150
ISP4516	BSA Bovine Serum Albumin	50 g	90
IS0382	Nonfat Dry Milk Powder	500 gr.	50
IS-2502-100	PBS TABLETS (200ml/tablet)	100 tablets	175
IS-10022	Ponceau Red Staining Solution	1 liter	130
ISB-001	SDS-Page Sample loading buffer 5X	5 x 1 ml	60
ISBR-003-5L	TRIS GLYCLINE Running Buffer SDS - 10X (POWDER SACHET/ 1 liter)	5 sachets (1L/each)	350
ISBR-7301-10	TBS Buffer (5X) 5 liter	5 X 1 L	150
IS0381	WB Stripping Buffer	250 ml	60
ISB-50001	Ripa Lysis and Extraction Buffer	100 ml	105

WESTERN BLOT EXTRACTION KITS

Cat N°	Description	Quantity	€ Price
WB-RR-90	Cytoplasmic & Nuclear Extraction Kit	1kit	220
IS-2811	Protease Inhibitor Cocktails (100x) (EDTA Free)	5ml (5x1ML)	350
IS-2812	Protease Inhibitor Cocktail (100x) (with EDTA)	5ml (5x1ML)	450
WB-RR-1010	Cell Mitochondria Extraction Kit	50-100 Assay	190
WB-RR-1011	Tissue Mitochondria Isolation Kit	50-100 Assay	190
WB-RR-1012	Bacterial Total Protein Extraction Reagent	50-100 Assay	190
WB-RR-1013	Plant Total Protein Extraction Reagent	50-100 Assay	190

HRP CONJUGATED SECONDARY ANTIBODIES

Cat N°	Description	Quantity	€ Price
IS20404	Donkey Anti- Mouse IgG (H+L) Highly cross-ad.	1 mg	260
IS20405	Donkey Anti- Rabbit IgG (H+L) Highly cross-ad.	1 mg	260
IS20406	Donkey Anti-Goat IgG (H+L)	500 ul	270
IS20400	Goat Anti-Mouse IgG (H+L)	1 mg	230
IS20402	Goat Anti-Rabbit IgG (H+L)	1 mg	230
IS22411	Goat Anti-Rat IgG (H+L)	500 ul	270
IS22412	Goat Anti-Rat IgG (H+L)	1ml	270
IS20409-C	Rabbit Anti Camel IgG (H+L)	100 ul	275
IS20407	Rabbit Anti- Chicken IgG (H+L)	500 ul	270
IS20413	AP Goat Anti Rabbit IgG (H+L)	500 ul	250
IS20414	AP Goat Anti Mouse IgG (H+L)	500 ul	250

BLOCKING REAGENTS

Cat N°	Description	Quantity	€ Price
ISS2000-100	Goat Serum	100ml	100
ISS2500-100	Rabbit Serum	100ml	100

PROTEIN QUANTIFICATION ASSAY KITS

Cat N°	Description	Quantity	€ Price
WB-RR-521	BCA assay kit	500 tubes / Microplate 5000 assays	110
WB-RR-522	BCA assay kit	1000 tubes / Microplate 10000 assays	180
WB-RR-96	Bradford Protein Assay Kit	3000Micropate Assay /750 Tests / spetrophotometer	185

VERTICAL ELECTROPHORESIS SYSTEM

ELECTROPHORESIS TANK

Dimensions (L*W*H) (mm)	185x108x125
Gel size (mm)	83x73
Maximum volume of buffer	500 ml
Price	€ 530



TRANSFER SYSTEM

Dimensions (L*W*H) (mm)	185x108x125
Transfer size (mm)	70x90
Maximum volume of buffer	500 ml
Price	€ 550



PROGRAMMABLE POWER SUPPLY

Input power	180V-240V
AC frequency	50Hz/60Hz
Output range	6V-600V
Rated output power	300W
Price	€ 995



DECOLORING SHAKER

The shaker is widely used in Western experiments such as blocking of blotting membranes, antibody incubation, washing, fixation, staining, and destaining of electrophoretic gels; it can also be used for shaking liquids in various centrifuge tubes, multi-well plates, Petri dishes, and culture bottles, mix well.

Product advantages

1. The tray is covered by a removable protective membrane
2. The shaker allows you to set a timer and select the RPMs to perform with extreme precision
3. Both shakers are equipped with an LCD screen
4. Both shakers are suitable for long-term operation



DS-200P

Pendulum shaker



MDS-100P

Mini Pendulum shake

Split-Type Shaker	DS-200P	MDS-100P
Movement	Pendulum movement	Pendulum movement
Speed range	5-100 rpm	0-200 rpm
Max load	5 Kg	2.5 Kg
Tray size	338*308mm	317*245mm
Tilt Angle	10°	20°
Weight	8.5Kg	5 Kg

DISPOSABLE GLOVES

Fisher Nitrite gloves are manufactured on fully automatic production lines with reliable quality. It has a comfortable fit that meets and adapts to your extended wear during your experiments. It also has extremely high sensitivity, excellent tensile and puncture resistance, high tensile strength and excellent abrasion resistance.

Cat.No.	Size	Description	Packing	€ Price
NS-1009 S	S	Disposable Nitrile Examination Gloves, Small	1000 Pcs/Box	75,00
NS-1009 M	M	Disposable Nitrile Examination Gloves, Medium	1000 Pcs/Box	75,00
NS-1009 L	L	Disposable Nitrile Examination Gloves, Large	1000 Pcs/Box	75,00
LS-1009 S	S	Disposable Latex Examination Gloves, Small	1000 Pcs/Box	75,00
LS-1009 M	M	Disposable Latex Examination Gloves, Medium	1000 Pcs/Box	75,00
LS-1009 L	L	Disposable Latex Examination Gloves, Large	1000 Pcs/Box	75,00

< 7 cm	XS
7-8 cm	S
8-9 cm	M
> 9 cm	L

There will be a certain tolerance around 5-10mm due to different hand shapes and measurement methods. This chart is only an approximate size, gloves should be tried on to confirm best fit.

