

INDEX

Western Blot Detection

ECL Western Blot Substrates **pg.1**

ECL West Pico Plus

ECL West Dura Plus

ECL West Femto Plus

Western Blot Reagents & Kits **pg.2-3**

Prestained Protein Ladders

Nitrocellulose Membranes

X-Ray Film

Reagents for Western Blot & Electrophoresis

HRP Conjugated Secondary Antibodies

Western blot Extraction Kits

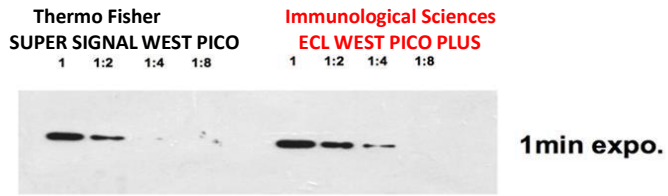
ECL WEST PICO PLUS

Specificity: It can detect **low-picogram and high-femtogram** amount of antigen

Working solution stability: 3 days

Primary antibody (con.1mg/mL): 100-500ng/mL – (1:2,000-1:10,000)

Duration of the signal : is 6~12h if the conc. of the secondary antibody is 10–50 ng/mL-(1:20,000-1:100,000)



CAT.#	Description	Sizes
ECL-2001	ECL West Pico Plus Substrate	2x100 ml (2000 cm ²)

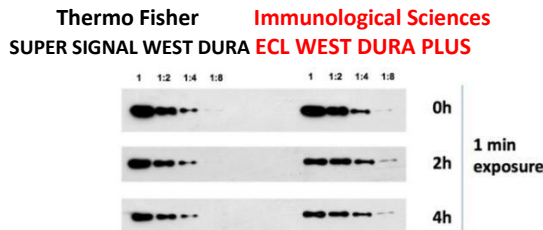
ECL WEST DURA PLUS

Specificity: It can detect **high and medium femtogram** amount of antigens

Working solution stability : 3 days

Primary antibody (conc.1mg/mL):20-1000 ng/mL : 1:1,000-1:50,000

Duration of the signal : is 12~24h if the conc. of the secondary antibody is 4–20 ng/mL(1:50,000-1:250,000)



CAT.#	Description	Sizes
ECL-2003	ECL West Dura Plus Substrate	2 x 50 ml (1000 cm ²)

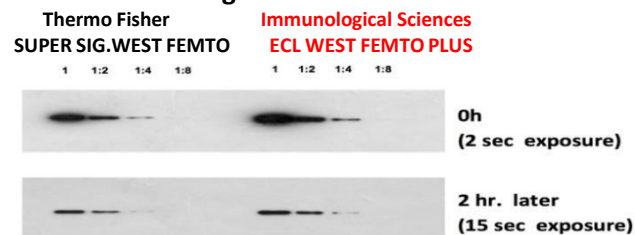
ECL WEST FEMTO PLUS

Specificity: It can detect **low femtogram** amount of antigens

Working solution stability: 3 days

Primary antibody (conc.1mg/mL):5-100 ng/mL - 1:10,000-1:200,000

Duration of the signal : is 6~12h if the conc. of the secondary antibody is 2–10 ng/mL(1:100,000-1:500,000)

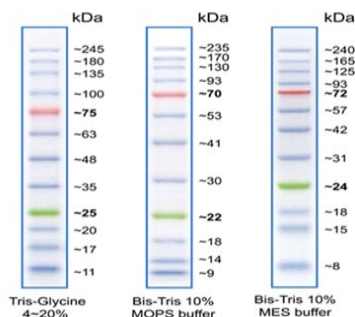


CAT.#	Description	Sizes
EC-2002	ECL West Femto Plus Substrate	2 x 50 ml (1000 cm ²)

Western Blot Reagents & Kits

PRESTAINED PROTEIN LADDERS

Cat N°	Description	Quantity
WB-RR-119-5	3 Color Protein Molecular Weight Marker High Range (8-250 kDa)	500 ul
WB-RR-120-5	3 Color Protein Molecular Weight Marker High Range (10-180 kDa)	500 ul



NITROCELLULOSE MEMBRANES

Cat N°	Description	Quantity
WB-RR-113	Nitrocellulose Membrane Roll (pore size 0.22 µm)	Roll 3m x 30cm
WB-RR-114	Nitrocellulose Membrane Roll (pore size 0.45 µm)	Roll 3m x 30cm

PVDF MEMBRANES

Cat N°	Description	Quantity
WB-RR-115	PVDF Membrane Roll (pore size 0.20 µm)	Roll 3m x 30cm
WB-RR-116	PVDF Membrane Roll (pore size 0.45 µm)	Roll 3m x 30cm

X-RAY FILM - DEVELOPING & FIXING KIT

Cat N°	Description	Quantity
WBX-001	Chemibluex X RAY FILM 8 x 10 inches	100 pz
WBX-002	Chemibluex X RAY FILM 5 x 7 inches	100 pz
WB-DEV-FIX-50	WB Developing and Fixing Kit	500ml

REAGENTS FOR WESTERN BLOT & ELECTROPHORESIS

Cat. #	Description	Size
ISP6154	BSA Bovine Serum Albumin	100 g
ISP4516	BSA Bovine Serum Albumin	50 g
IS0382	Nonfat Dry Milk Powder	500 gr.
IS-2502-100	PBS TABLETS (200ml/tablet)	100 tablets
IS-10022	Ponceau Red Staining Solution	1 liter
ISB-001	SDS-Page Sample loading buffer 5X	5 x 1 ml
ISBR-003-5L	TRIS GLYCLINE Running Buffer SDS - 10X (POWDER SACHET/ 1 liter)	5 sachets (1L/each)
ISBR-7301-10	TBS Buffer (5X) 5 liter	5 X 1 L
IS0381	WB Stripping Buffer	200 ml

WESTERN BLOT EXTRACTION KITS

Cat N°	Description	Quantity
WB-RR-90	Cytoplasmic & Nuclear Extraction Kit	1kit
IS-2811	Protease Inhibitor Cocktail (100x) (EDTA Free)	5ml (5x1ML)
IS-2812	Protease Inhibitor Cocktail (100x) (with EDTA)	5ml (5x1ML)
WB-RR-1010	Cell Mitochondria Extraction Kit	50-100 Assay
WB-RR-1011	Tissue Mitochondria Isolation Kit	50-100 Assay
WB-RR-1012	Bacterial Total Protein Extraction Reagent	50-100 Assay
WB-RR-1013	Plant Total Protein Extraction Reagent	50-100 Assay

HRP CONJUGATED SECONDARY ANTIBODIES

Cat. N°	Description	Size
IS20404	Donkey Anti- Mouse IgG (H+L) Highly cross-ad.	1 mg
IS20405	Donkey Anti- Rabbit IgG (H+L) Highly cross-ad.	1 mg
IS20406	Donkey Anti-Goat IgG (H+L)	500 ul
IS20400	Goat Anti-Mouse IgG (H+L)	1 mg
IS20402	Goat Anti-Rabbit IgG (H+L)	1 mg
IS22411	Goat Anti-Rat IgG (H+L)	500 ul
IS22412	Goat Anti-Rat IgG (H+L)	1ml
IS20407	Rabbit Anti- Chicken IgG (H+L)	500 ul

SERUM BLOCKING

Cat N°	Description	Quantity
ISS2000-100	Goat Serum	100 ml
ISS2500-100	Rabbit Serum	100 ml

PROTEIN QUANTIFICATION ASSAY KITS

Cat N°	Description	Quantity
WB-RR-521	BCA Protein Quantification Assay Kit	2500 Microplate assay - 250 Spectrophotometer Test Tubes
WB-RR-522	BCA Protein Quantification Assay Kit	5000 Microplate assay - 500 Spectrophotometer Test Tubes
WB-RR-96	Bradford Protein Assay Kit	3000 Microplate assay - 750 Spectrophotometer Test Tube