



Prestained Protein Ladder

3 Color Protein Molecular Weight (Range: 8-245 kDa)

WB-RR-119-5

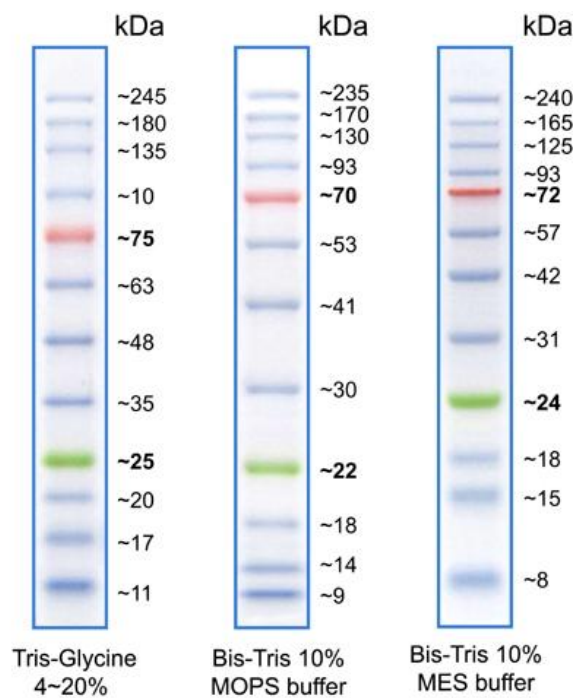
Size: 500 µl

The Prestained Protein Ladder is a three-color protein standard with 12 pre-stained proteins covering a wide range of molecular weights from 8 to 245 kDa. Proteins are covalently coupled with a blue chromophore except for two reference bands (one green and one red band at 25 kDa and 75 kDa respectively) when separated on SDS-PAGE (Tris-glycine buffer). The Prestained Protein Ladder is designed for monitoring protein separation during SDS-polyacrylamide gel electrophoresis, verification of Western transfer efficiency on membranes (PVDF, nylon, or nitrocellulose) and for approximating the size of proteins. The ladder is supplied in gel loading buffer and is ready to use.

-SDS-polyacrylamide gel electrophoresis,

-verification of Western transfer efficiency on membranes (PVDF, nylon, or nitrocellulose) and for approximate sizing of proteins.

The ladder is supplied in gel loading buffer and is ready-to-use. Do not heat, dilute, or add reducing agent before loading.



Features:

- Sharp and stable
- Two reference bands – red at ~75 kDa and green at ~25 kDa.
- 3 µl or 5 µl per loading for clear visualization during electrophoresis on 15-well or 10-well mini-gel, respectively
- 1,5 µl to 2,5 µl per well for general Western transferring
- Apply more for thicker (>1,5mm) or larger gel

Contents: 0.1-0.4 mg/ml of each protein in 20 mM Trisphosphate (pH 7.5 at 25°C) 2% SDS. 1mM Dithiothreitol, 3,6M Urea and 15% glycerol

Quality Control: Tested in SDS Polyacrylamide Gel Electrophoresis & Western Blot

Storage: At 4°C for 3 months and at -20°C for 24 months

**For Research use only
IMMUNOLOGICAL SCIENCES**

Web-site: www.immunologicalsciences.com - E-Mail: info@immunologicalsciences.com