

INDICE

| | |
|---|----|
| ECL WEST PICO | 2 |
| ECL WEST DURA PLUS | 2 |
| ECL WEST FEMTO PLUS | 3 |
| ECL WEST BRIGHT PLUS | 3 |
| PRESTAINED PROTEIN LADDERS | 4 |
| TRANSFER MEMBRANES | 5 |
| X-RAY FILM | 6 |
| REAGENTS FOR WESTERN BLOT & ELECTROPHORESIS | 6 |
| WESTERN BLOT EXTRACTION KITS | 6 |
| HRP CONJUGATED SECONDARY ANTIBODIES | 7 |
| BLOCKING | 7 |
| PROTEIN QUANTIFICATION ASSAY KITS | 7 |
| VERTICAL ELECTROPHORESIS SYSTEM | 8 |
| DECOLORING SHAKER | 9 |
| DISPOSABLE GLOVES | 10 |

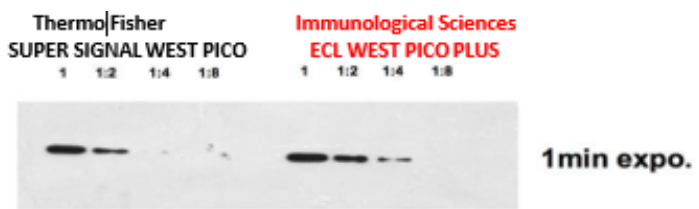
ECL WEST PICO

Specificity: It can detect **low-picogram and high-femtogram** amount of antigen

Working solution stability: 3 days

Primary antibody (con.1mg/mL): 100-500ng/mL – (1:2,000-1:10,000)

Duration of the signal : is **6~12h** if the conc. of the secondary antibody is 10–50 ng/mL-(1:20,000-1:100,000)



| Cat N° | Description | Quantity | € Price |
|----------|------------------------------|----------------------------------|---------|
| ECL-2001 | ECL West Pico Plus Substrate | 2x100 ml (2000 cm ²) | 100,00 |

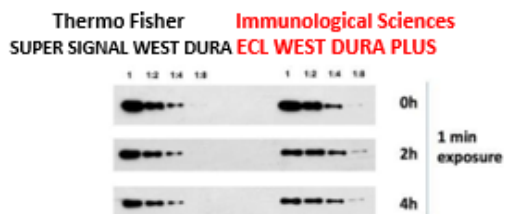
ECL WEST DURA PLUS

Specificity: It can detect **high and medium femtogram** amount of antigens

Working solution stability : 3 days

Primary antibody (conc.1mg/mL):20-1000 ng/mL : 1:1,000-1:50,000

Duration of the signal : is **12~24h** if the conc. of the secondary antibody is 4–20 ng/mL(1:50,000-1:250,000)



| Cat N° | Description | Quantity | € Price |
|----------|------------------------------|------------------------------------|---------|
| ECL-2003 | ECL West Dura Plus Substrate | 2 x 100 ml (1000 cm ²) | 200,00 |

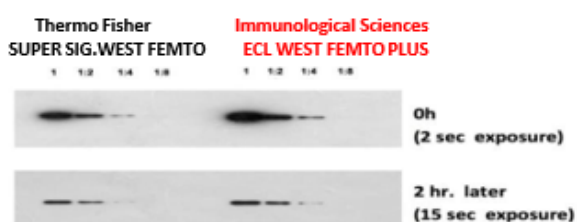
ECL WEST FEMTO PLUS

Specificity: It can detect **low femtogram** amount of antigens

Working solution stability: 3 days

Primary antibody (conc.1mg/mL):5-100 ng/mL - 1:10,000-1:200,000

Duration of the signal : is **6~12h** if the conc. of the secondary antibody is 2–10 ng/mL(1:100,000-1:500,000)



| Cat N° | Description | Quantity | € Price |
|---------|-------------------------------|-----------------------------------|---------|
| EC-2002 | ECL West Femto Plus Substrate | 2 x 50 ml (1000 cm ²) | 250,00 |

ECL WEST BRIGHT PLUS

Specificity: It can detect **low picogram** and **mid femto** amount of antigens

Working solution stability: 3 days

Primary antibody 1:5, 000 -1:10,000 or 0,02 -1 ug/mL

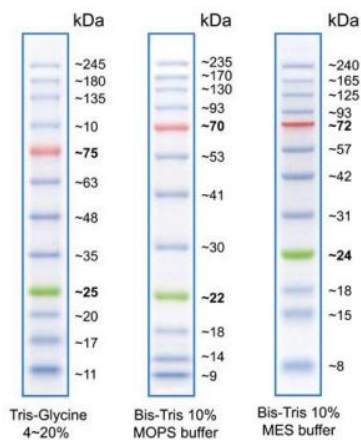
Duration of the signal : **6~12h** if the conc. of the secondary antibody is 4–10 ng/mL



| CAT.# | Description | Sizes | € Price |
|----------|--------------------------------|----------------------------------|---------|
| ECL-2004 | ECL West Bright Plus Substrate | 2x100 ml (2000 cm ²) | 100,00 |

PRESTAINED PROTEIN LADDERS

During western blotting, prestained and fluorescent protein ladders can be used for approximate determination of molecular weight, monitoring the progress of electrophoresis runs, and/or estimating the efficiency of protein transfer to the membrane during western blotting. We offer several prestained and fluorescent protein ladders supplied in a ready-to-use format to facilitate easy protein analysis during gel electrophoresis and fluorescent western blotting.



WB-RR-119-5 (8-245 kDa)

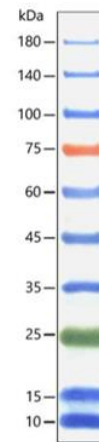
Features:

- Sharp and stable
- Two reference bands – red at ~75 kDa and green at ~25 kDa.
- 3 µl or 5 µl per loading for clear visualization during electrophoresis on 15-well or 10-well mini-gel, respectively
- 1,5 µl to 2,5 µl per well for general Western transferring
- Apply more for thicker (>1,5mm) or larger gel

Contents: 0.1-0.4 mg/ml of each protein in 20 mM Trisphosphate (pH 7.5 at 25°C) 2% SDS, 1mM Dithiothreitol, 3,6M Urea and 15% glycerol

Quality Control: Tested in SDS Polyacrylamide Gel Electrophoresis & Western Blot

Storage: At 4°C for 3 months and at -20°C for 24 months



WB-RR-120-5 (10-180 kDa)

Features:

- Ready to use: Do NOT heat, dilute, or add reducing agents before loading
- Reference bands: 75kDa (red), 25kDa (green)
- Loading Volume: 3-5 uL/well for mini gel; 1.5-2.5 uL/ well for Western transfer; 6-10 uL/ well for large gel
- Type of membranes: PVDF, nylon, or nitrocellulose

Contents: Approximately 0.1 ~0.4 mg/ml of each protein in the buffer (20 mM Tris-phosphate (pH 7.5 at 25°C), 2 % 505, 0.2 mM Dithiothreitol, 3.6 M Urea, and 15 % (v/v) Glycerol).

Quality Control: Tested in SDS Polyacrylamide Gel Electrophoresis &

TRANSFER MEMBRANES

Nitrocellulose Membranes

The Immunological sciences **Nitrocellulose membranes** with 0.45µm pore size is the general lab standard for most protein and nucleic acid applications; it ensures high retention of samples between 13kD-400kD. Nitrocellulose Transfer Membrane with 0.22µm pore size ensures high retention of small samples below 20 kD.

Both the membranes have high binding, low background and high retention of small proteins, the protein binding capacity reaches 125µg/cm².

Filter Membrane Roll: 30cm x 3m



Nitrocellulose Membranes

| Cod.No | WB-RR-113 | WB-RR-114 |
|------------------|-----------------|-----------------|
| Pore Size | 0.22µm | 0.45µm |
| Price | € 298,00 | € 298,00 |

PVDF Membranes

The Immunological Sciences **PVDF Transfer Membrane** with 0.22µm pore size is designed for protein sequencing applications, protein binding capacity (over 200 µg/cm²) for easy signal detection. PVDF Transfer Membrane with 0.45µm pore size is designed for western blotting and protein dot-blotting applications, protein binding capacity reaches 125µg/cm². High protein retention even after harsh wash steps. Extremely low backgrounds provide clear signals and sharp bands. A single blot can be sequentially analyzed with multiple antibodies by stripping the first antibody from the blot and incubating with another.

Filter Membrane Roll: 30cm x 3m

PVDF Membranes

| Cod.No | WB-RR-115 | WB-RR-116 |
|------------------|-----------------|-----------------|
| Pore Size | 0.22µm | 0.45µm |
| Price | € 385,00 | € 385,00 |

X-RAY FILM - Developing and Fixing Kit

| Cat N° | Description | Quantity | € Price |
|----------------|-----------------------------------|----------|------------|
| WBX-001 | Chemiblu X RAY FILM 8 x 10 inches | 100 pz | 260 |
| WBX-002 | Chemiblu X RAY FILM 5 x 7 inches | 100 pz | 185 |

REAGENTS FOR WESTERN BLOT & ELECTROPHORESIS

| Cat N° | Buffers | Quantity | € Price |
|---------------------|---|---------------------|------------|
| ISP6154 | BSA Bovine Serum Albumin | 100 g | 150 |
| ISP4516 | BSA Bovine Serum Albumin | 50 g | 90 |
| IS0382 | Nonfat Dry Milk Powder | 500 gr. | 50 |
| IS-2502-100 | PBS TABLETS (200ml/tablet) | 100 tablets | 175 |
| IS-10022 | Ponceau Red Staining Solution | 1 liter | 185 |
| ISB-001 | SDS-Page Sample loading buffer 5X | 5 x 1 ml | 60 |
| ISBR-003-5L | TRIS GLYCLINE Running Buffer SDS - 10X (POWDER SACHET/ 1 liter) | 5 sachets (1L/each) | 350 |
| ISBR-7301-10 | TBS Buffer (5X) 5 liter | 5 X 1 L | 150 |
| IS0381 | WB Stripping Buffer | 250 ml | 60 |
| ISB-50001 | Ripa Lysis and Extraction Buffer | 100 ml | 105 |
| ISB-50002 | Ripa Lysis Buffer (Strong) | 100 ml | 120 |

WESTERN BLOT EXTRACTION KITS

| Cat N° | Description | Quantity | € Price |
|-----------------|--|-------------|------------|
| WB-RR-90 | Cytoplasmic & Nuclear Extraction Kit | 1kit | 220 |
| IS-2811 | Protease Inhibitor Cocktails 100X (EDTA Free) | 1 ML | 150 |
| IS-2811 | Protease Inhibitor Cocktails (100x) (EDTA Free) | 5ml (5x1ML) | 350 |
| IS-2812 | Protease Inhibitor Cocktail (100x) (with EDTA) | 1 ML | 150 |
| IS-2812 | Protease Inhibitor Cocktail (100x) (with EDTA) | 5ml (5x1ML) | 450 |
| IS10051 | Phosphatase Inhibitor Cocktail 100 X | 2 Tubes | 150 |

HRP CONJUGATED SECONDARY ANTIBODIES

| Cat N° | Description | Quantity | € Price |
|-----------|--|----------|---------|
| IS20404 | Donkey Anti- Mouse IgG (H+L) Highly cross-ad. | 1 mg | 260 |
| IS20405 | Donkey Anti- Rabbit IgG (H+L) Highly cross-ad. | 1 mg | 260 |
| IS20406 | Donkey Anti-Goat IgG (H+L) | 500 ul | 270 |
| IS20400 | Goat Anti-Mouse IgG (H+L) | 1 mg | 230 |
| IS20402 | Goat Anti-Rabbit IgG (H+L) | 1 mg | 230 |
| IS22411 | Goat Anti-Rat IgG (H+L) | 500 ul | 270 |
| IS22412 | Goat Anti-Rat IgG (H+L) | 1ml | 270 |
| IS20409-C | Rabbit Anti Camel IgG (H+L) | 100 ul | 275 |
| IS20407 | Rabbit Anti- Chicken IgG (H+L) | 500 ul | 270 |
| IS20413 | AP Goat Anti Rabbit IgG (H+L) | 500 ul | 250 |
| IS20414 | AP Goat Anti Mouse IgG (H+L) | 500 ul | 250 |

BLOCKING REAGENTS

| Cat N° | Description | Quantity | € Price |
|--------------|--------------|----------|---------|
| ISS2000-100 | Goat Serum | 100ml | 100 |
| ISS2500-100 | Rabbit Serum | 100ml | 100 |
| ISS21700-100 | Donkey Serum | 100ml | 100 |

PROTEIN QUANTIFICATION ASSAY KITS

| Cat N° | Description | Quantity | € Price |
|-----------|----------------------------|--|---------|
| WB-RR-521 | BCA assay kit | 250 tubes / Microplate 2500 assays | 110 |
| WB-RR-522 | BCA assay kit | 500 tubes / Microplate 5000 assays | 180 |
| WB-RR-96 | Bradford Protein Assay Kit | 3000Micropate Assay /750 Tests / spettrophotometer | 185 |

VERTICAL ELECTROPHORESIS SYSTEM

ELECTROPHORESIS TANK

| | |
|--------------------------|-------------|
| Dimensions (L*W*H) (mm) | 185x108x125 |
| Gel size (mm) | 83x73 |
| Maximum volume of buffer | 500 ml |
| Price | € 530 |



TRANSFER SYSTEM

| | |
|--------------------------|-------------|
| Dimensions (L*W*H) (mm) | 185x108x125 |
| Transfer size (mm) | 70x90 |
| Maximum volume of buffer | 500 ml |
| Price | € 550 |



PROGRAMMABLE POWER SUPPLY

| | |
|--------------------|-----------|
| Input power | 180V-240V |
| AC frequency | 50Hz/60Hz |
| Output range | 6V-600V |
| Rated output power | 300W |
| Price | € 995 |



DECOLORING SHAKER

The shaker is widely used in Western experiments such as blocking of blotting membranes, antibody incubation, washing, fixation, staining, and destaining of electrophoretic gels; it can also be used for shaking liquids in various centrifuge tubes, multi-well plates, Petri dishes, and culture bottles, mix well.

Product advantages

1. The tray is covered by a removable protective membrane
2. The shaker allows you to set a timer and select the RPMs to perform with extreme precision
3. Both shakers are equipped with an LCD screen
4. Both shakers are suitable for long-term operation



DS-200P

Pendulum shaker



MDS-100P

Mini Pendulum shake

| Split-Type Shaker | DS-200P | MDS-100P |
|-------------------|-------------------|-------------------|
| Movement | Pendulum movement | Pendulum movement |
| Speed range | 5-100 rpm | 0-200 rpm |
| Max load | 5 Kg | 2.5 Kg |
| Tray size | 338*308mm | 317*245mm |
| Tilt Angle | 10° | 20° |
| Weight | 8.5Kg | 5 Kg |

DISPOSABLE GLOVES

Fisher Nitrite gloves are manufactured on fully automatic production lines with reliable quality. It has a comfortable fit that meets and adapts to your extended wear during your experiments. It also has extremely high sensitivity, excellent tensile and puncture resistance, high tensile strength and excellent abrasion resistance.

| Cat.No. | Size | Description | Packing | € Price |
|-----------|------|---|--------------|---------|
| NS-1009 S | S | Disposable Nitrile Examination Gloves, Small | 1000 Pcs/Box | 75,00 |
| NS-1009 M | M | Disposable Nitrile Examination Gloves, Medium | 1000 Pcs/Box | 75,00 |
| NS-1009 L | L | Disposable Nitrile Examination Gloves, Large | 1000 Pcs/Box | 75,00 |
| LS-1009 S | S | Disposable Latex Examination Gloves, Small | 1000 Pcs/Box | 75,00 |
| LS-1009 M | M | Disposable Latex Examination Gloves, Medium | 1000 Pcs/Box | 75,00 |
| LS-1009 L | L | Disposable Latex Examination Gloves, Large | 1000 Pcs/Box | 75,00 |

| | |
|--------|----|
| < 7 cm | XS |
| 7-8 cm | S |
| 8-9 cm | M |
| > 9 cm | L |

There will be a certain tolerance around 5-10mm due to different hand shapes and measurement methods. This chart is only an approximate size, gloves should be tried on to confirm best fit.

