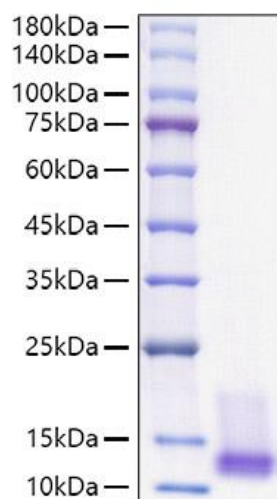


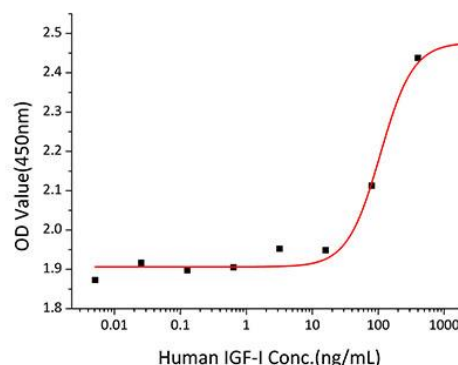


GFR-10552 Recombinant Human IGF-I Protein

- Size:** 50ug
- Tags:** No tag
- Synonyms:** IGF-1;IGF-I;IGF1A;IGFI;IGF?I;MGF;IGF1
- Source:** Pichia
- Purification:** > 95% by SDSPAGE.
- Endotoxin:** < 0.1 EU/μg of the protein by LAL method.
- Description:** Recombinant Human IGF-I Protein is produced by Pichia expression system. The target protein is expressed with sequence (Gly49-Ala118) of human IGF-I fused with no additional amino acid.
- Bio-Activity:** Measured in a serum-free cell proliferation assay using MCF-7 human breast cancer cells. The ED50 for this effect is typically 53.5-214.2 ng/mL.
- Reconstitution:** Centrifuge the vial before opening.Reconstitute to a concentration of 0.1-0.5 mg/mL in sterile distilled water. Avoid vortex or vigorously pipetting the protein. For long term storage, it is recommended to add a carrier protein or stabilizer (e.g. 0.1% BSA, 5% HSA, 10% FBS or 5% Trehalose), and aliquot the reconstituted protein solution to minimize free-thaw cycles.
- Formulation:** Lyophilized from a 0.22 μm filtered solution of PBS, pH 7.4.
- Storage:** Store the lyophilized protein at -20°C to -80°C for long term. After reconstitution, the protein solution is stable at -20°C for 3 months, at 2-8°C for up to 1 week. Avoid repeated freeze/thaw cycles



Recombinant Human IGF-I Protein was determined by SDS-PAGE with Coomassie Blue, showing a band at 10-15 kDa.



Recombinant Human IGF-I stimulates cell proliferation of the MCF-7 human breast cancer cells. The ED50 for this effect is typically 53.5-214.2 ng/mL.

For Research use only
IMMUNOLOGICAL SCIENCES