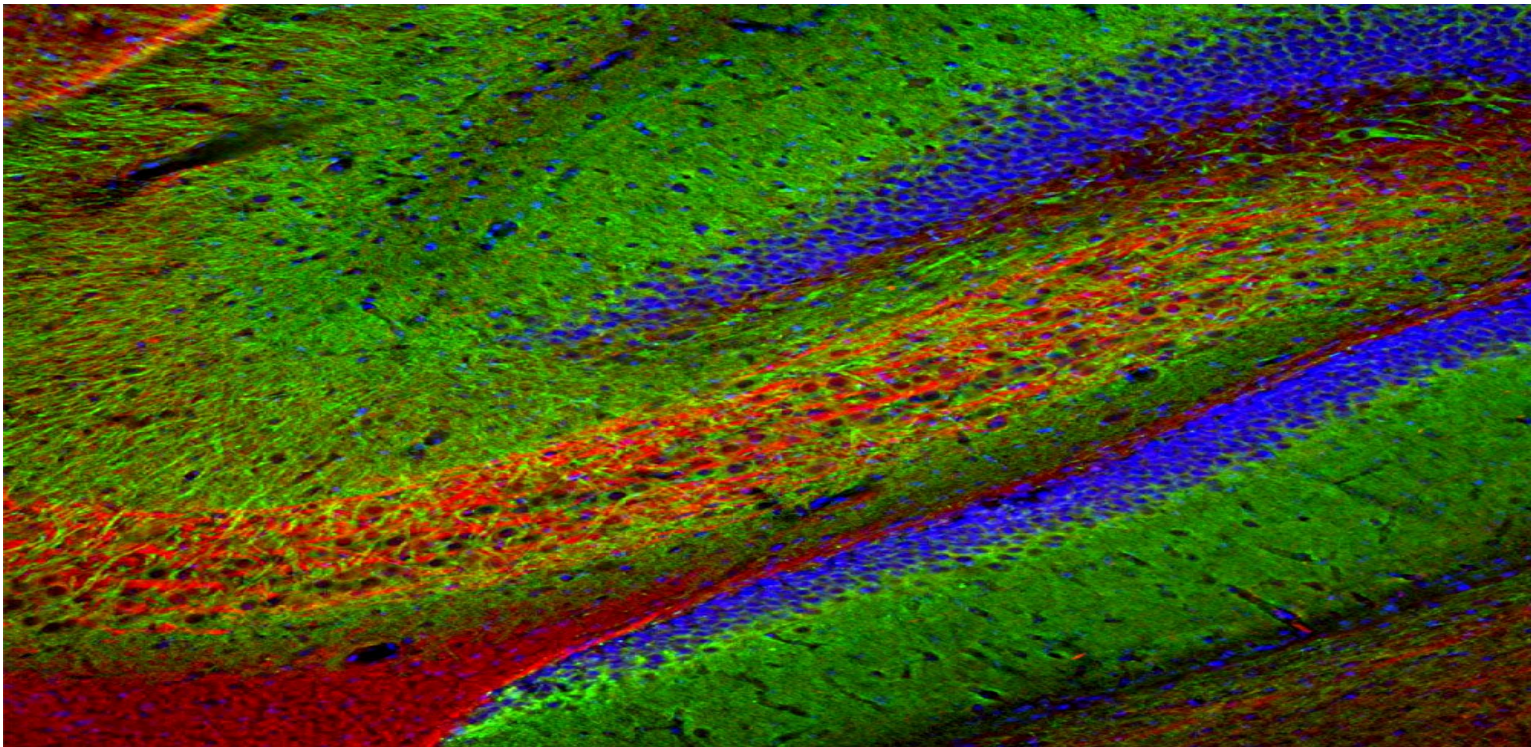


# **Neuroscience Antibodies**



**Catalogue 2025**



**IMMUNOLOGICAL SCIENCES**

*Dear Valued Customer,*

Immunological Sciences is an innovative Biotech Company, specialized in the production of Monoclonal and Polyclonal Antibodies for Life Sciences Research.

Immunological Sciences has acquired diversified know-how in the past years and has a long and productive cooperation with advanced Research Centers both with Italian and international Universities. These types of collaboration were created with one major goal: to produce reliable, high quality products to be utilized in the immunological sector. In the early years, our company concentrated on the creation of antibodies against Adhesion Molecules, and this is, to date, our core-business. Furthermore we have developed new and differentiated products which range from Apoptosis and Signal Transduction to Neurobiology.

We hope that you'll continue to support this field of research. Our pledge is to assure high quality products, competitive pricing and technical support. We also hope you'll find this new catalogue useful and look forward in receiving your comments.

## Species

### All Species

**Amphibia:** Amphibia  
**Av:** Avian  
**Bov:** Bovine  
**Ca:** Canine  
**Calf:** Calf  
**Camel:** Camel  
**Carp:** Carp  
**Cat:** Cat  
**Ch:** Chicken  
**Cow:** Cow  
**Dg:** Dog  
**Eq:** Equine  
**Fe:** Feline  
**Fish:** Fish  
**Gp:** Guinea Pig  
**Gt:** Goat  
**Ha:** Hamster  
**Hr:** Horse  
**Hu:** Human  
**Insect:** Insect  
**Liz:** Lizard  
**Mamm:** Mammalian  
**Mk:** Monkey  
**Ms:** Mouse  
**Non Hu Pr:** Non Human Primates  
**Not Det.:** Not Determined  
**Op:** Opossum  
**Ov:** Ovine  
**Pig:** Pig  
**Plants:** Plants  
**Pm:** Primate  
**Pr:** Porcine  
**Prot:** Protozoa  
**Qu:** Quail  
**Rb:** Rabbit  
**RhMk:** Rhesus Monkey  
**Rodent/Rdt:** Rodent  
**Rt:** Rat  
**Sal:** Salmon  
**Sh:** Sheep  
**Sn:** Snake  
**Sw:** Swine  
**Xe:** Xenopus  
**Ye:** Yeast  
**ZbF:** Zebra Fish

## Applications

**AGG:** Agglutination  
**BLK:** Blocking  
**CELC:** Cell Culture  
**COAT:** Coating  
**CTR:** Control Experiment  
**EL:** Electrophoresis  
**ELISA:** ELISA  
**EM:** Electron Microscopy  
**FA/FUNC:** Functional Application  
**FC/FACS:** Flow Cytometry  
**ICC:** ImmunoCytoChemistry  
**IF:** ImmunoFluorescence  
**IHC(F):** ImmunoHistoChemistry (Frozen sections)  
**IHC(P):** ImmunoHistoChemistry (Paraffin sections)  
**IHC:** ImmunoHistoChemistry  
**Int.St.:** Intracellular Staining  
**In Vivo**  
**IP:** ImmunoPrecipitation  
**LB/LBS:** Ligand Binding Studies  
**Neut.:** Neutralization  
**RIA:** RadiImmunoAssay  
**STIM:** Stimulation  
**WB(nr):** Western Blotting (not reported)  
**WB:** Western Blotting

## NEUROBIOLOGY ANTIBODIES

Cat.n.	Description	Host	Clone	Isotype	Applications	Species	Size	Price
ABE4285	<b>Acetylcholine Receptor Alpha 1</b>	Rb	POLY	IgG	WB;IF;ELISA	Hu;Ms;Rt	100ug	<b>295</b>
ABE4640	<b>Acetylcholine Receptor Alpha 1</b>	Rb	POLY	IgG	IHC;IF;ELISA	Hu;Ms;Rt	100ug	<b>295</b>
ABE1582	<b>Acetylcholine Receptor Alpha 3</b>	Rb	POLY	IgG	WB;ELISA	Hu;Ms;Rt	100ug	<b>295</b>
ABE1583	<b>Acetylcholine Receptor Alpha 5</b>	Rb	POLY	IgG	WB;ELISA	Hu;Ms;Rt;Mk	100ug	<b>295</b>
ABE20416	<b>Acetylcholine Receptor Alpha 7</b>	Rb	POLY	IgG	WB; ELISA	Hu;Ms;Rt	100ug	<b>295</b>
ABE8440	<b>Acetylcholine Receptor Alpha 9</b>	Rb	POLY	IgG	WB;ELISA	Hu;Ms;Rt	100ug	<b>295</b>
ABE1581	<b>Acetylcholine Receptor Alpha 10</b>	Rb	POLY	IgG	WB;ELISA	Hu;Ms;Rt	100ug	<b>295</b>
ABE4643	<b>Acetylcholine Receptor Beta1</b>	Rb	POLY	IgG	WB;ELISA	Hu;Ms;Rt	100ug	<b>295</b>
ABE18494	<b>ACHA2 /Nicotinic acetylch. rec(AChRs )</b>	Rb	POLY	IgG	WB	Hu; Ms;Rt	100ug	<b>295</b>
ABE9916	<b>ACHA4 /Nicotinic acetylch. rec(AChRs )</b>	Rb	POLY	IgG	WB;ELISA	Hu;Rt;Ms	100ug	<b>295</b>
ABE9917	<b>ACHA6 /Nicotinic acetylch. rec(AChRs )</b>	Rb	POLY	IgG	WB;ELISA	Hu;Rt;Ms	100ug	<b>295</b>
ABE9918	<b>ACHB3 /Nicotinic acetylch. rec(AChRs )</b>	Rb	POLY	IgG	WB;ELISA	Hu;Ms;Rt	100ug	<b>295</b>
ABE9919	<b>ACHB4 /Nicotinic acetylch. rec(AChRs )</b>	Rb	POLY	IgG	WB;ELISA	Hu;Rt;Ms	100ug	<b>295</b>
ABE6254	<b>AChE /Acetylcholinesterase</b>	Rb	POLY	IgG	WB;IHC;IF;ELISA	Hu;Ms;Rt	100ug	<b>295</b>
ABE6255	<b>AChE /Acetylcholinesterase</b>	Rb	POLY	IgG	WB;ELISA	Hu;Ms;Rt	100ug	<b>295</b>
ABE18451	<b>ADR1</b>	Rb	POLY	IgG	WB	Hu; Ms	100ug	<b>295</b>
ABE18450	<b>ADR2</b>	Rb	POLY	IgG	WB	Hu; Ms	100ug	<b>295</b>
ABE18447	<b>Adrenocorticotropin(ACTH)</b>	Rb	POLY	IgG	IHC;IF;WB	Hu; Ms; Rt	100ug	<b>295</b>
ABE3887	<b>ALDH1A1</b>	Rb	POLY	IgG	WB;IHC;IF;ELISA	Hu;Rt;Ms;	100ug	<b>295</b>
ABE7892	<b>ALDH1A2</b>	Rb	POLY	IgG	WB;IHC;IF;ELISA	Hu;Ms;Rt	100ug	<b>295</b>
ABE3755	<b>ALDH3A1</b>	Rb	POLY	IgG	WB;ELISA	Hu;Rt	100ug	<b>295</b>
ABE1638	<b>ALDH3B1</b>	Rb	POLY	IgG	WB;IHC;IF;ELISA	Hu;Rt;Ms;	100ug	<b>295</b>
ABE1639	<b>Aldolase A</b>	Rb	POLY	IgG	WB;IF;ELISA	Hu;Ms;Rt	100ug	<b>295</b>
ABE1640	<b>Aldolase B</b>	Rb	POLY	IgG	WB;IHC;IF;ELISA	Hu;Ms;Rt	100ug	<b>295</b>
ABE3914	<b>Aldolase C</b>	Rb	POLY	IgG	WB;IHC;IF;ELISA	Hu;Ms;Rt	100ug	<b>295</b>
MAB-94076	<b>Aldolase C (CT)</b>	Ms	1A1	IgG1	WB, ICC, IF, IHC	Hu, Ho, Cw, Pg, Ch, Rt, Ms	100 ug	<b>395</b>
MAB-94077	<b>Aldolase C (NT)</b>	Ms	4A9	IgG1	WB, ICC IF, IHC	Hu, Rt, Ms, Ho, Cw, Pg, Ch	100 ug	<b>395</b>
MAB-94075	<b>Aldolase C full-length</b>	Ms	E9	IgG1	WB, ICC, IF, IHC	Hu, Ho, Cw, Pg, Ch, Rt, Ms	100 ug	<b>395</b>
MAB-94078	<b>Amyloid A<math>\beta</math></b>	Ms	AB9	IgG1	WB, ICC IF, IHC	Hu, Rt, Ms, Ho, Cw, Pg, Ch	100 ug	<b>395</b>
ABE1652	<b>Amyloid-<math>\beta</math></b>	Rb	POLY	IgG	WB;IHC;IF;ELISA	Hu;Ms;Rt	100ug	<b>295</b>
ABE8472	<b>Amyloid-<math>\beta</math></b>	Rb	POLY	IgG	IF;WB;IHC;ELISA	Hu;Ms;Rt	100ug	<b>295</b>

Cat.n.	Description	Host	Clone	Isotype	Applications	Species	Size	Price
ABE8491	<b>Amyloid-β</b>	Rb	POLY	IgG	WB; IF;ELISA	Hu;Rt;Ms;	100ug	<b>295</b>
ABE3788	<b>APLP-1</b>	Rb	POLY	IgG	WB;IHC;IF;ELISA	Hu;Ms	100ug	<b>295</b>
ABE6028	<b>Arginase I</b>	Rb	POLY	IgG	WB;IHC;IF;ELISA	Hu;Ms;Rt	100ug	<b>295</b>
ABE1695	<b>Arginase II</b>	Rb	POLY	IgG	WB;ELISA	Hu;Rt;Ms;	100ug	<b>295</b>
MAB-94385	<b>Arrestin-1</b>	Ms	S128	IgG1	WB, IF, ICC	Hu Rt Ms,Cw, Pg	100 ug	<b>395</b>
ABE1710	<b>Arrestin-β-1</b>	Rb	POLY	IgG	WB;IHC;IF;ELISA	Hu;Mk	100ug	<b>295</b>
ABE6148	<b>Arrestin-β-1</b>	Rb	POLY	IgG	WB;IHC;IF;ELISA	Hu;Ms;Rt	100ug	<b>295</b>
ABE6145	<b>Arrestin-C</b>	Rb	POLY	IgG	WB;IHC;IF;ELISA	Hu;Rt;Ms;	100ug	<b>295</b>
AB-84383	<b>ASM</b>	Rb	POLY	IgG	WB	Hu;Rt;Ms;	100ug	<b>295</b>
ABE18225	<b>ASTL</b>	Rb	POLY	IgG	WB	Hu; Ms	100ug	<b>295</b>
ABE1718	<b>Ataxin-1</b>	Rb	POLY	IgG	WB;IHC;IF;ELISA	Hu;Ms	100ug	<b>295</b>
ABE1719	<b>Ataxin-2</b>	Rb	POLY	IgG	WB;IHC;IF;ELISA	Hu;Rt;Ms;	100ug	<b>295</b>
ABE4628	<b>Ataxin-2L</b>	Rb	POLY	IgG	WB;ELISA	Hu;Rt;Ms;	100ug	<b>295</b>
ABE5235	<b>Ataxin-7L1</b>	Rb	POLY	IgG	IHC;IF;ELISA	Hu;Ms	100ug	<b>295</b>
ABE5373	<b>BACE 1</b>	Rb	POLY	IgG	IHC;IF;ELISA	Hu;Ms;Rt	100ug	<b>295</b>
ABE8887	<b>BACE 1</b>	Rb	POLY	IgG	WB;ELISA	Hu;Ms;Rt	100ug	<b>295</b>
AB-10362	<b>BACE1</b>	Rb	POLY	IgG	WB, IHC ,IP	Hu, Ms, Rt	100 ug	<b>295</b>
ABE11348	<b>BACE2</b>	Rb	POLY	IgG	WB;ELISA	Hu;Rt;Ms	100ug	<b>295</b>
ABE20334	<b>BDNF</b>	Rb	POLY	IgG	WB; ELISA	Ms;Rt	100ug	<b>295</b>
AB-83595	<b>BDNF (Mature Form)</b>	Rb	POLY	IgG	WB, IHC(P) ,IF ,ICC	Hu, Ms, Rt	100 ug	<b>295</b>
AB-83902	<b>Calbindin D28K</b>	Ch	POLY	IgY	WB, IF, ICC, IHC	Hu Rt Ms,Cw, Pg	100 ul	<b>380</b>
MAB-94138	<b>Calbindin D28K</b>	Ms	4H7	IgG1	WB, ICC, IF, IHC(F)	Hu, Rt, Ms, Cw, Ho, Pg, Ch	100 ug	<b>395</b>
ABS15668	<b>Calbindin D28K</b>	Ms	5H7	IgG1	WB, ICC, IF, IHC(F)	Rt, Ms,	100 ug	<b>295</b>
ABE3939	<b>Calbindin D28K</b>	Rb	POLY	IgG	WB;IHC;IF;ELISA	Hu;Ms;Rt	100ug	<b>295</b>
ABE8609	<b>Calcitonin</b>	Rb	POLY	IgG	WB;IHC;IF;ELISA	Hu;Rt;Ms;	100ug	<b>295</b>
ABE11455	<b>Calcitonin receptor</b>	Rb	POLY	IgG	WB;ELISA	Hu;Rt;Ms;	100ug	<b>295</b>
ABE7605	<b>Caldesmon</b>	Rb	POLY	IgG	WB;IHC;IF;ELISA	Hu;Ms;Rt	100ug	<b>295</b>
ABE7606	<b>Caldesmon</b>	Rb	POLY	IgG	WB;ELISA	Hu;Ms;Rt	100ug	<b>295</b>
ABE1829	<b>Calmodulin</b>	Rb	POLY	IgG	WB;IHC;IF;ELISA	Hu;Ms;Rt	100ug	<b>295</b>
ABE214	<b>Calnexin</b>	Rb	POLY	IgG	WB, IHC	Hu, Rt, Ms	100ug	<b>295</b>
ABE1830	<b>Calnexin</b>	Rb	POLY	IgG	WB;IHC;IF;ELISA	Hu;Ms;Rt	100ug	<b>295</b>
ABE366	<b>Calreticulin</b>	Rb	POLY	IgG	WB	Hu, Ms, Rt	100ug	<b>295</b>
ABE20803	<b>Calreticulin</b>	Rb	POLY	IgG	WB	Hu; Ms; Rt	100ug	<b>295</b>

Cat.n.	Description	Host	Clone	Isotype	Applications	Species	Size	Price
ABE8443	<b>Calretinin</b>	Rb	POLY	IgG	WB;IHC;IF;ELISA	Hu;Ms;Rt	100ug	<b>295</b>
ABE4723	<b>Cannabinoid Receptor 1 / CB1</b>	Rb	POLY	IgG	WB;IHC;IF;ELISA	Hu;Ms;Rt;Mk	100ug	<b>295</b>
ABE1874	<b>Cannabinoid Receptor 2 / CB2</b>	Rb	POLY	IgG	WB;IF;ELISA	Hu;Rt;Ms;	100ug	<b>295</b>
ABE275	<b>Cav pan <math>\alpha</math>1</b>	Rb	POLY	IgG	IHC	Hu, Rt, Ms	100ug	<b>295</b>
ABE20799	<b>Cav pan <math>\alpha</math>1</b>	Rb	POLY	IgG	IHC;IF	Hu;Rt;Ms	100ug	<b>295</b>
ABE191	<b>Cav <math>\beta</math>3</b>	Rb	POLY	IgG	WB, IHC	Rt, Ms	100ug	<b>295</b>
ABE192	<b>Cav <math>\gamma</math>2</b>	Rb	POLY	IgG	WB, IHC	Hu, Rt, Ms	100ug	<b>295</b>
ABE193	<b>Cav <math>\gamma</math>3</b>	Rb	POLY	IgG	WB, IHC	Hu, Rt, Ms	100ug	<b>295</b>
ABE195	<b>Cav <math>\gamma</math>4</b>	Rb	POLY	IgG	WB, IHC	Hu, Rt, Ms	100ug	<b>295</b>
ABE196	<b>Cav <math>\gamma</math>5</b>	Rb	POLY	IgG	WB, IHC	Hu, Rt, Ms	100ug	<b>295</b>
ABE269	<b>Cav1.2</b>	Rb	POLY	IgG	IHC	Hu, Rt, Ms	100ug	<b>295</b>
ABE20798	<b>Cav1.2</b>	Rb	POLY	IgG	IHC;IF	Hu;Rt;Ms	100ug	<b>295</b>
ABE270	<b>Cav1.3</b>	Rb	POLY	IgG	IHC	Hu, Rt, Ms	100ug	<b>295</b>
ABE20797	<b>Cav1.3</b>	Rb	POLY	IgG	IHC;IF	Hu;Rt;Ms	100ug	<b>295</b>
ABE271	<b>Cav2.2</b>	Rb	POLY	IgG	IHC	Hu, Rt, Ms	100ug	<b>295</b>
ABE20796	<b>Cav2.2</b>	Rb	POLY	IgG	IHC;IF	Hu;Rt;Ms	100ug	<b>295</b>
ABE272	<b>Cav3.2</b>	Rb	POLY	IgG	IHC	Hu, Rt, Ms	100ug	<b>295</b>
ABE20795	<b>Cav3.2</b>	Rb	POLY	IgG	IHC;IF	Hu;Rt;Ms	100ug	<b>295</b>
ABE273	<b>Cav3.3</b>	Rb	POLY	IgG	IHC	Hu, Rt, Ms	100ug	<b>295</b>
ABE20794	<b>Cav3.3</b>	Rb	POLY	IgG	IHC;IF	Hu;Rt;Ms	100ug	<b>295</b>
ABE1873	<b>Caveolin-1</b>	Rb	POLY	IgG	WB;IHC;IF;ELISA	Hu;Ms;Rt	100ug	<b>295</b>
ABE267	<b>CaVa2<math>\delta</math>1</b>	Rb	POLY	IgG	WB, IHC	Rt	100ug	<b>295</b>
ABE20793	<b>CaVa2<math>\delta</math>1</b>	Rb	POLY	IgG	WB;IHC;IF	Rt	100ug	<b>295</b>
ABE268	<b>CaVa2<math>\delta</math>2</b>	Rb	POLY	IgG	WB, IHC	Hu, Rt, Ms	100ug	<b>295</b>
ABE20792	<b>CaVa2<math>\delta</math>2</b>	Rb	POLY	IgG	WB;IHC;IF	Hu;Rt;Ms	100ug	<b>295</b>
ABE274	<b>CaVa2<math>\delta</math>3</b>	Rb	POLY	IgG	WB	Hu, Rt, Ms	100ug	<b>295</b>
ABE20791	<b>CaVa2<math>\delta</math>3</b>	Rb	POLY	IgG	WB	Hu;Rt;Ms	100ug	<b>295</b>
ABE3990	<b>CD107a / LAMP1</b>	Rb	POLY	IgG	WB,IHC(P), IF	Hu,Ms,Rt	100 $\mu$ g	<b>295</b>
MAB-94580	<b>CD11b</b>	Rt	M1/70	IgG2b	FC, IHC(P), IHC(F) , IF	Ms	100 ug	<b>250</b>
ABE8673	<b>CD11b</b>	Rb	POLY	IgG	IHC;IF;mult-IHC;ELISA	Hu;Rt;Ms;	100ug	<b>295</b>
MAB-94456	<b>CD11b/c</b>	Ms	OX-42	IgG2a	FC, IHC(P), IHC(F)	Rt	100 ug	<b>250</b>
MAB-94376	<b>CD133 (Prominin 1)</b>	Ms	AC.133	IgG1	FC, ICC, IHC (P), IHC (F), WB	Hu	100 ug	<b>195</b>
ABE3922	<b>CD133 (Prominin 1)</b>	Rb	POLY	IgG	WB;IHC;IF;ELISA	Hu;Ms	100ug	<b>295</b>

Cat.n.	Description	Host	Clone	Isotype	Applications	Species	Size	Price
ABE8423	<b>CD56 (N-CAM)</b>	Rb	POLY	IgG	WB;IHC;IF;ELISA	Hu;Rt;Ms;	100ug	<b>295</b>
MAB-10060	<b>CD56 (N-CAM)</b>	Ms	MEM-188	IgG2a	FC, IP, IHC(P)	Hu	100 ug	<b>195</b>
MAB-90973	<b>CD68</b>	Rt	FA-11	IgG2a	FC ,WB, IHC(F), IP	Ms	50 ug	<b>250</b>
ABE3940	<b>CD68</b>	Rb	POLY	IgG	WB, IHC(P), IF	Hu	100 ug	<b>295</b>
ABE1050	<b>CD68</b>	Ms	6F8	IgG	IHC	Hu, Rt, Ms	100 ug	<b>295</b>
ABE042	<b>c-Fos</b>	Rb	POLY	IgG	WB, IHC	Hu, Rt, Ms	100ug	<b>295</b>
ABE1193	<b>c-Fos</b>	Ms	2H3	IgG	WB, IHC	Hu, Rt, Ms	100 ug	<b>295</b>
ABE1965	<b>CFTR</b>	Rb	POLY	IgG	WB;IHC;IF;ELISA	Hu;Ms;Rt	100ug	<b>295</b>
AB-84238	<b>Choline Acetyltransferase (ChAT)</b>	Rb	POLY	IgG	WB, IHC(F), IHC(P), IP, IF	Hu, Ms, Rt	100 ug	<b>295</b>
ABE1975	<b>Choline Acetyltransferase (ChAT)</b>	Rb	POLY	IgG	WB,	Hu, Ms, Rt	100 ug	<b>295</b>
ABE4630	<b>Cholinergic receptor, muscarinic 1 (CHRM1)</b>	Rb	POLY	IgG	WB;ELISA	Hu;Ms;Rt	100ug	<b>295</b>
ABE4631	<b>Cholinergic receptor, muscarinic 2 (CHRM2)</b>	Rb	POLY	IgG	WB;IF;ELISA	Hu;Ms;Rt	100ug	<b>295</b>
ABE2737	<b>Cholinergic receptor, muscarinic 4 (CHRM4)</b>	Rb	POLY	IgG	WB;IF;ELISA	Hu;Ms;Rt	100ug	<b>295</b>
ABE4636	<b>Cholinergic receptor, muscarinic 5 (CHRM5)</b>	Rb	POLY	IgG	WB;IF;ELISA	Hu;Rt;Ms;	100ug	<b>295</b>
ABE18494	<b>Cholinergic receptor, nicotinic A2 (CHRNA2)</b>	Rb	POLY	IgG	WB	Hu; Ms;Rt	100ug	<b>295</b>
ABE9916	<b>Cholinergic receptor, nicotinic A4 (CHRNA4)</b>	Rb	POLY	IgG	WB;ELISA	Hu;Rt;Ms	100ug	<b>295</b>
ABE9917	<b>Cholinergic receptor, nicotinic A6 (CHRNA6)</b>	Rb	POLY	IgG	WB;ELISA	Hu;Rt;Ms	100ug	<b>295</b>
ABE9918	<b>Cholinergic receptor, nicotinic B3 (CHRNB3)</b>	Rb	POLY	IgG	WB;ELISA	Hu;Ms;Rt	100ug	<b>295</b>
ABE9919	<b>Cholinergic receptor, nicotinic B4 (CHRNB4)</b>	Rb	POLY	IgG	WB;ELISA	Hu;Rt;Ms	100ug	<b>295</b>
ABE1980	<b>Chromogranin A</b>	Rb	POLY	IgG	WB;IHC;IF;ELISA	Hu;Ms;Rt	100ug	<b>295</b>
MAB-94094	<b>CNPase</b>	Ms	11-5B	IgG1	WB, ELISA, IHC, IHC(P)	Hu,Rt,Ms,	100 ul	<b>395</b>
ABE2015	<b>CNPase</b>	Rb	POLY	IgG	WB;IHC;IF;ELISA	Hu;Ms;Rt	100ug	<b>295</b>
AB- 83241	<b>CNPase</b>	Ch	POLY	IgY	WB, ICC/IF, IHC	Hu, Ms, Rt	100 ul	<b>380</b>
AB-84731	<b>CNPase</b>	Gt	POLY	IgG	WB, ICC/IF, IHC	Hu, Rt, Ms, Co, Pi	100 ug	<b>450</b>
ABE3927	<b>Cyclophilin A/PPIA</b>	Rb	POLY	IgG	WB, IHC(P)	Hu, Rt, Ms	100µg	<b>295</b>
ABE2145	<b>DARPP-32</b>	Rb	POLY	IgG	WB;IHC;IF;ELISA	Hu;Ms;Rt	100ug	<b>295</b>
ABE9718	<b>DLX1</b>	Rb	POLY	IgG	WB;ELISA	Hu;Rt;Ms	100ug	<b>295</b>
ABE8850	<b>Dlx-2</b>	Rb	POLY	IgG	WB;ELISA	Hu;Ms;Rt	100ug	<b>295</b>
ABE2176	<b>Dlx-3</b>	Rb	POLY	IgG	WB;IHC;IF;ELISA	Hu;Ms	100ug	<b>295</b>
ABE2177	<b>Dlx-4</b>	Rb	POLY	IgG	WB;IHC;IF;ELISA	Hu;Rt;Ms;	100ug	<b>295</b>
ABE2178	<b>Dlx-5</b>	Rb	POLY	IgG	WB;IHC;IF;ELISA	Hu;Ms;Rt	100ug	<b>295</b>
ABE4969	<b>Dopamine Beta Hydroxylase (DBH)</b>	Rb	POLY	IgG	WB	Hu; Ms	100ug	<b>295</b>
FNab02511	<b>Dopamine Beta Hydroxylase (DBH)</b>	Rb	POLY	IgG	WB ,IHC ,IF	Hu, Ms, Rt	100ug	<b>295</b>

Cat.n.	Description	Host	Clone	Isotype	Applications	Species	Size	Price
AB3828	<b>Dopamine Decarboxylase (DDC)</b>	Rb	POLY	IgG	WB	Hu, Ms, Rt	100 ug	<b>395</b>
ABE5026	<b>Dopamine Receptor D1</b>	Rb	POLY	IgG	WB;IHC;IF;ELISA	Hu, Ms, Rt	100ug	<b>295</b>
ABE11460	<b>Dopamine Receptor D2</b>	Rb	POLY	IgG	WB	Hu, Ms, Rt	100 ug	<b>295</b>
ABE4178	<b>Dopamine Receptor D3</b>	Rb	POLY	IgG	WB;IHC;IF;ELISA	Hu, Ms, Rt	100ug	<b>295</b>
ABE2137	<b>Dopamine Receptor D4</b>	Rb	POLY	IgG	WB;IF;ELISA	Hu, Ms, Rt	100ug	<b>295</b>
ABE11461	<b>Dopamine Receptor D5</b>	Rb	POLY	IgG	WB,	Hu, Ms, Rt	100 ug	<b>295</b>
AB1327	<b>Dopamine Transporter</b>	Rb	POLY	IgG	WB, IHC, IP	Hu, Ms, Rt	100 ul	<b>395</b>
ABE4976	<b>Doublecortin</b>	Rb	POLY	IgG	WB;ELISA	Hu, Ms, Rt	100ug	<b>295</b>
ABE4977	<b>Doublecortin</b>	Rb	POLY	IgG	WB;IHC;IF;ELISA	Hu, Ms, Rt	100ug	<b>295</b>
MAB-10423	<b>Fragile X Mental Retardation Protein (FMRP)</b>	Ms	1C3-1a	IgG1,k	WB, ELISA, IHC, ICC, (IP)	Hu, Ms	100 ul	<b>465</b>
MAB-10485	<b>Fragile X Mental Retardation Protein (FMRP)</b>	Ms	1G2	IgG1,k	WB	Hu	100 ul	<b>395</b>
MAB-10876	<b>Fragile X Mental Retardation Protein (FMRP)</b>	Ms	STR23	IgG1,k	WB, ICC, IF, FC	Hu	100 ug	<b>390</b>
ABE2375	<b>FRP-2</b>	Rb	POLY	IgG	WB;ELISA	Hu;Ms;Rt	100ug	<b>295</b>
ABE16290	<b>GAB4</b>	Rb	POLY	IgG	WB	Hu;Rt;Ms;	100ug	<b>295</b>
ABE5429	<b>GABA A receptor Beta 1</b>	Rb	POLY	IgG	IHC;IF;WB;ELISA	Hu;Ms;Rt	100ug	<b>295</b>
ABE5430	<b>GABA A receptor Beta 2</b>	Rb	POLY	IgG	WB;IHC;IF;ELISA	Hu;Ms;Rt	100ug	<b>295</b>
ABE5432	<b>GABA A receptor Delta</b>	Rb	POLY	IgG	WB;IHC;IF;ELISA	Hu;Ms;Rt	100ug	<b>295</b>
ABE3798	<b>GABA A receptor Eta</b>	Rb	POLY	IgG	WB;ELISA	Hu;Rt;Ms;	100ug	<b>295</b>
ABE5434	<b>GABA A receptor Gamma1</b>	Rb	POLY	IgG	WB;IHC;IF;ELISA	Hu;Ms;Rt	100ug	<b>295</b>
ABE289	<b>GABA A receptor Gamma2</b>	Rb	POLY	IgG	WB, IHC	Hu, Rt, Ms	100ug	<b>295</b>
ABE20747	<b>GABA A receptor Gamma2</b>	Rb	POLY	IgG	WB;IHC;IF	Hu;Rt;Ms	100ug	<b>295</b>
ABE4299	<b>GABA A Receptor <math>\alpha</math>1</b>	Rb	POLY	IgG	WB;IHC;IF;ELISA	Hu;Ms;Rt	100ug	<b>295</b>
ABE285	<b>GABA A Receptor <math>\alpha</math>2</b>	Rb	POLY	IgG	WB, IHC	Hu, Rt, Ms	100ug	<b>295</b>
ABE20750	<b>GABA A Receptor <math>\alpha</math>2</b>	Rb	POLY	IgG	WB;IHC;IF	Hu;Rt;Ms	100ug	<b>295</b>
ABE286	<b>GABA A Receptor <math>\alpha</math>3</b>	Rb	POLY	IgG	WB, IHC	Hu, Rt, Ms	100ug	<b>295</b>
ABE20749	<b>GABA A Receptor <math>\alpha</math>3</b>	Rb	POLY	IgG	WB;IHC;IF	Hu;Rt;Ms	100ug	<b>295</b>
ABE20748	<b>GABA A Receptor <math>\alpha</math>4</b>	Rb	POLY	IgG	WB;IHC;IF	Hu;Rt;Ms	100ug	<b>295</b>
ABE2387	<b>GABA A Receptor <math>\alpha</math>4</b>	Rb	POLY	IgG	WB;ELISA	Hu;Ms;Rt	100ug	<b>295</b>
ABE2388	<b>GABA A receptor alpha-6</b>	Rb	POLY	IgG	WB;ELISA	Hu;Ms;Rt	100ug	<b>295</b>
ABE289	<b>GABA A Receptor <math>\gamma</math>2</b>	Rb	POLY	IgG	WB, IHC	Hu, Rt, Ms	100ug	<b>295</b>
ABE20747	<b>GABA A Receptor <math>\gamma</math>2</b>	Rb	POLY	IgG	WB;IHC;IF	Hu;Rt;Ms	100ug	<b>295</b>
ABE8482	<b>GABA A receptor-ass.prof-like 2</b>	Rb	POLY	IgG	WB;ELISA	Hu;Ms;Rt	100ug	<b>295</b>
ABE5427	<b>GABA B Receptor 1</b>	Rb	POLY	IgG	WB;IF;ELISA	Hu;Ms;Rt;GP	100ug	<b>295</b>



Cat.n.	Description	Host	Clone	Isotype	Applications	Species	Size	Price
ABE288	<b>GABA B Receptor 2</b>	Rb	POLY	IgG	IHC	Hu, Rt, Ms	100ug	<b>295</b>
ABE20746	<b>GABA B Receptor 2</b>	Rb	POLY	IgG	IHC;IF	Hu;Rt;Ms	100ug	<b>295</b>
ABE8063	<b>GABA B Receptor 2</b>	Rb	POLY	IgG	WB;ELISA	Hu;Ms;Rt	100ug	<b>295</b>
ABE7218	<b>GABA T-1</b>	Rb	POLY	IgG	WB;ELISA	Hu;Ms;Rt	100ug	<b>295</b>
ABE8587	<b>GABA T-1</b>	Rb	POLY	IgG	WB;IHC;IF;ELISA	Hu;Ms;Rt	100ug	<b>295</b>
ABE7229	<b>GABA T-3</b>	Rb	POLY	IgG	WB;ELISA	Hu;Ms;Rt	100ug	<b>295</b>
ABE290	<b>GABA Transporter 1</b>	Rb	POLY	IgG	WB, IHC	Hu, Rt, Ms	100ug	<b>295</b>
ABE20745	<b>GABA Transporter 1</b>	Rb	POLY	IgG	WB;IHC;IF	Hu;Rt;Ms	100ug	<b>295</b>
ABE4299	<b>GABAA Rα1</b>	Rb	POLY	IgG	WB;IHC;IF;ELISA	Hu;Ms;Rt	100ug	<b>295</b>
ABE16289	<b>GABP2</b>	Rb	POLY	IgG	WB	Hu, Ms	100ug	<b>295</b>
ABE2390	<b>GAD-65/67</b>	Rb	POLY	IgG	WB;IHC;IF;ELISA	Hu;Ms	100ug	<b>295</b>
ABE5436	<b>GAD67</b>	Rb	POLY	IgG	WB;IHC;IF;ELISA	Hu;Ms;Rt	100ug	<b>295</b>
ABE2391	<b>GADD 45 gamma</b>	Rb	POLY	IgG	WB;IHC;IF;ELISA	Hu;Ms;Rt	100ug	<b>295</b>
ABE8613	<b>GADD34</b>	Rb	POLY	IgG	WB;ELISA	Hu;Rt;Ms;	100ug	<b>295</b>
ABE5444	<b>GALANIN RECEPTOR 1</b>	Rb	POLY	IgG	IF;ELISA	Hu;Ms	100ug	<b>295</b>
ABE291	<b>GALANIN RECEPTOR 2</b>	Rb	POLY	IgG	WB	Hu, Rt, Ms	100ug	<b>295</b>
ABE7881	<b>GALANIN RECEPTOR 2</b>	Rb	POLY	IgG	WB;ELISA	Hu;Ms;Rt	100ug	<b>295</b>
ABE7783	<b>GALANIN RECEPTOR 3</b>	Rb	POLY	IgG	WB;IF;ELISA	Hu;Rt;Ms;	100ug	<b>295</b>
ABE16282	<b>GALC</b>	Rb	POLY	IgG	WB	Hu, Ms	100ug	<b>295</b>
ABE16281	<b>GALE</b>	Rb	POLY	IgG	WB	Hu, Ms;Rt	100ug	<b>295</b>
ABE6104	<b>Galectin-1</b>	Rb	POLY	IgG	WB;ELISA	Hu;Rt;Deer	100ug	<b>295</b>
ABE6105	<b>Galectin-2</b>	Rb	POLY	IgG	IHC;IF;ELISA	Hu;Ms;Rt	100ug	<b>295</b>
ABE1881	<b>Galectin-3</b>	Rb	IgG	IgG	WB IHC, IF	Hu,Ms,Rt	100 ug	<b>295</b>
AB-83908	<b>GAP43</b>	Ch	POLY	IgY	WB, IF, IHC	Hu Rt Ms,Cw, Pg, Ho, Ch,	100 ul	<b>380</b>
ABE2398	<b>GAP-43</b>	Rb	POLY	IgG	WB;IHC;IF;ELISA	Hu;Ms;Rt	100ug	<b>295</b>
ABE051	<b>GAP43</b>	Rb	POLY	IgG	WB, IHC	Hu, Rt, Ms	100ug	<b>295</b>
ABE1181	<b>GAP43</b>	Ms	9A3	IgG	WB, IHC	Hu, Rt, Ms	100 ug	<b>295</b>
ABE11350	<b>GDNF</b>	Rb	POLY	IgG	WB;ELISA	Hu,Ms,Rt	100 ug	<b>295</b>
MAB-12029	<b>GFAP</b>	Ms	GA5	IgG1	WB, ICC, IF, IHC (F),IHC (P)	Hu, Pig, Ch, Rt, Ms	100 ug	<b>295</b>
ABE1059	<b>GFAP</b>	Ms	26F	IgG	WB, IHC	Rt, Ms	100 ug	<b>295</b>
ABS15096	<b>GFAP</b>	Ms	5C10	IgG1	WB, IF, ICC, IHC	Hu, Ms, Rt,	100 ul	<b>295</b>
ABE5510	<b>GFAP</b>	Rb	POLY	IgG	WB;IHC;IF;ELISA	Hu;Rt;Ms;	100ug	<b>295</b>
AB-10682	<b>GFAP</b>	Rb	POLY	IgG	WB, ICC, IHC (F) , IHC (P)	Hu, Ms, Rt, Ct, Mamm.	100 ul	<b>295</b>

Cat.n.	Description	Host	Clone	Isotype	Applications	Species	Size	Price
AB-10678	<b>GFAP</b>	Ch	POLY	IgY	WB, ICC, IF, IHC (F),IHC (P)	Hu, Ms, Rt, Ct, Mamm	100 ul	<b>380</b>
AB-84378	<b>GFAP</b>	GT	POLY	IgG	WB, ICC, IHC (F) , IHC (P)	Hu, Ms, Rt, Ct, Mamm.	100 ul	<b>450</b>
ABE2438	<b>GLUT 1 (glucose transporter 1)</b>	Rb	POLY	IgG	IF;WB;IHC;ELISA	Hu;Ms;Rt	100ug	<b>295</b>
AB12307	<b>GLUT 2 (glucose transporter 2)</b>	Rb	POLY	IgG	WB, IF	Hu, Ms,Rt	100 ug	<b>395</b>
AB9843	<b>GLUT 2 (glucose transporter 2)</b>	Rb	POLY	IgG	WB, IHC(P)	Hu, Ms,Rt	100 ug	<b>395</b>
ABE7215	<b>GLUT 3 (glucose transporter 3)</b>	Rb	POLY	IgG	WB;IHC;IF;ELISA	Hu;Rt;Ms;	100ug	<b>295</b>
ABE4253	<b>GLUT 4 (glucose transporter 4)</b>	Rb	POLY	IgG	WB;IHC;IF;ELISA	Hu;Ms;Rt	100ug	<b>295</b>
ABE4118	<b>GLUT 5 (glucose transporter 5)</b>	Rb	POLY	IgG	WB;ELISA	Hu;Rt;Ms;	100ug	<b>295</b>
AB16521	<b>GLUT 8 (glucose transporter 8)</b>	Rb	POLY	IgG	WB	Ms, Rt	100 ug	<b>395</b>
AB14606	<b>GLUT 9 (glucose transporter 9)</b>	Rb	POLY	IgG	WB,IHC-P ,IF	Hu,Ms,Rt	100 ug	<b>395</b>
ABE265	<b>Glutamate Receptor 1</b>	Rb	POLY	IgG	WB, IHC	Hu, Rt, Ms	100ug	<b>295</b>
ABE20732	<b>Glutamate Receptor 1</b>	Rb	POLY	IgG	WB;IHC;IF	Hu;Rt;Ms	100ug	<b>295</b>
ABE2435	<b>Glutamate Receptor 1</b>	Rb	POLY	IgG	WB;IHC;IF;ELISA	Hu;Ms;Rt	100ug	<b>295</b>
ABE2435	<b>Glutamate Receptor 1</b>	Rb	POLY	IgG	WB;IHC;IF;ELISA	Hu;Ms;Rt	100ug	<b>295</b>
ABE2437	<b>Glutamate Receptor 2</b>	Rb	POLY	IgG	WB;IHC;IF;ELISA	Hu;Ms;Rt	100ug	<b>295</b>
AB1159	<b>Glutamate Receptor 3</b>	Rb	POLY	IgG	WB,IHC-P ,IF	Hu,Ms,Rt	100 ug	<b>395</b>
ABE5638	<b>Glutamate Receptor 4</b>	Rb	POLY	IgG	WB;IHC;IF;ELISA	Hu;Ms;Rt	100ug	<b>295</b>
ABE5642	<b>Glutamate Receptor 5</b>	Rb	POLY	IgG	WB;IHC;IF;ELISA	Hu;Ms;Rt	100ug	<b>295</b>
ABE15906	<b>Glutamate Receptor 7</b>	Rb	POLY	IgG	WB	Hu; Ms;Rt	100ug	<b>295</b>
ABE5639	<b>Glutamate receptor delta-1</b>	Rb	POLY	IgG	WB;IHC;IF;ELISA	Hu;Ms;Rt	100ug	<b>295</b>
ABE5640	<b>Glutamate receptor delta-2</b>	Rb	POLY	IgG	WB;IF;ELISA	Hu;Ms;Rt	100ug	<b>295</b>
ABE15905	<b>Glutamate Receptor KA1</b>	Rb	POLY	IgG	WB	Hu; Ms;Rt	100ug	<b>295</b>
ABE10691	<b>Glutamate Receptor KA2</b>	Rb	POLY	IgG	WB;ELISA	Hu;Rt;Ms;	100ug	<b>295</b>
ABE284	<b>Glutamate Transporter 2 (GLT1/EAAT2)</b>	Rb	POLY	IgG	WB	Hu, Rt, Ms	100ug	<b>295</b>
ABE20771	<b>Glutamate Transporter 2 (GLT1/EAAT2)</b>	Rb	POLY	IgG	WB	Hu;Rt;Ms	100ug	<b>295</b>
AB-82459	<b>Glutamate Transporter 2 (GLT1/EAAT2)</b>	Rb	POLY	IgG	WB,IHC(P)	Hu, Ms, Rt	100 ug	<b>390</b>
ABE2216	<b>Glutamate Transporter GLIA (GLAST /EAAT1)</b>	Rb	POLY	IgG	WB;ELISA	Hu;Rt;Ms;	100ug	<b>295</b>
AB-82224	<b>Glutamate Transporter GLIA (GLAST /EAAT1)</b>	Rb	POLY	IgG	WB, IHC(P) ,IHC(F)	Hu, Ms, Rt	100 ug	<b>390</b>
ABE2217	<b>Glutamate Transporter neuronal (EAAC1/EAAT3)</b>	Rb	POLY	IgG	WB;ELISA	Hu;Ms;Rt	100ug	<b>295</b>
ABE3765	<b>GLUTAMINE SYNTHETASE</b>	Rb	POLY	IgG	WB;ELISA	Hu;Ms;Rt	100ug	<b>295</b>
ABE16150	<b>GM-130</b>	Rb	POLY	IgG	WB, IHC(P), IF	Hu, Ms, Rt	100 ug	<b>295</b>
ABE2474	<b>GRIN1</b>	Rb	POLY	IgG	WB;ELISA	Hu;Rt;Ms;	100ug	<b>295</b>
ABE2475	<b>GRIN2</b>	Rb	POLY	IgG	WB;IHC;IF;ELISA	Hu;Rt;Ms;	100ug	<b>295</b>

Cat.n.	Description	Host	Clone	Isotype	Applications	Species	Size	Price
ABE8929	<b>GRIN2D</b>	Rb	POLY	IgG	WB;ELISA	Hu;Ms;Rt	100ug	<b>295</b>
ABE5610	<b>GRIN3</b>	Rb	POLY	IgG	IHC;IF;ELISA	Hu;Rt;Ms;	100ug	<b>295</b>
ABE10692	<b>GRIP1</b>	Rb	POLY	IgG	WB;ELISA	Hu;Ms;Rt	100ug	<b>295</b>
ABE4486	<b>GRIP-1</b>	Rb	POLY	IgG	IHC;IF;ELISA	Hu;Rt;Ms;	100ug	<b>295</b>
ABE10693	<b>GRIP2</b>	Rb	POLY	IgG	WB;ELISA	Hu;Rt;Ms;	100ug	<b>295</b>
ABE2476	<b>GRK 1</b>	Rb	POLY	IgG	WB;IHC;IF;ELISA	Hu;Ms;Rt	100ug	<b>295</b>
ABE2477	<b>GRK 2</b>	Rb	POLY	IgG	WB;IHC;IF;ELISA	Hu;Ms;Rt	100ug	<b>295</b>
ABE2479	<b>GRK 3</b>	Rb	POLY	IgG	WB;IHC;IF;ELISA	Hu;Ms;Rt	100ug	<b>295</b>
ABE5622	<b>GRK 4</b>	Rb	POLY	IgG	IHC;IF;ELISA	Hu;Rt;Ms;	100ug	<b>295</b>
ABE2480	<b>GRK 5</b>	Rb	POLY	IgG	WB;IHC;IF;ELISA	Hu;Ms;Rt	100ug	<b>295</b>
ABE5624	<b>GRK 6</b>	Rb	POLY	IgG	WB;IF;ELISA	Hu;Ms;Rt	100ug	<b>295</b>
ABE2481	<b>GRK 7</b>	Rb	POLY	IgG	WB;IF;ELISA	Hu;Rt;Ms;	100ug	<b>295</b>
ABE11164	<b>HES1</b>	Rb	POLY	IgG	WB;ELISA	Hu;Rt;Ms	100ug	<b>295</b>
ABE10672	<b>HES2</b>	Rb	POLY	IgG	WB;ELISA	Hu;Rt;Ms;	100ug	<b>295</b>
ABE10582	<b>HES3</b>	Rb	POLY	IgG	WB;ELISA	Hu;Ms;Rt	100ug	<b>295</b>
ABE10933	<b>HES4</b>	Rb	POLY	IgG	WB;ELISA	Hu;Rt;Ms;	100ug	<b>295</b>
ABE10581	<b>HES5</b>	Rb	POLY	IgG	WB;ELISA	Hu;Ms;Rt	100ug	<b>295</b>
ABE2510	<b>HES-6</b>	Rb	POLY	IgG	WB;IHC;IF;ELISA	Hu;Rt;Ms;	100ug	<b>295</b>
AB19064	<b>Huntingtin</b>	Rb	D7F7	IgG	WB, IHC, IF	Hu, Ms, Rt	100 ug	<b>395</b>
AB-E16329	<b>Huntingtin</b>	Rb	POLY	IgG	WB, IHC, IF	Hu;Ms;Rt	100ug	<b>295</b>
ABE5728	<b>Huntingtin</b>	Rb	POLY	IgG	IHC;IF;ELISA	Hu;Ms;Rt	100ug	<b>295</b>
ABE20106	<b>Huntingtin (Acetyl Lys442)</b>	Rb	POLY	IgG	WB; ELISA	Hu;Ms;Rt	100ug	<b>295</b>
MAB-94354	<b>Huntingtin Protein</b>	Ms	EM48	IgG1	ELISA, WB, ICC, IHC	Hu	100 ul	<b>495</b>
MAB-11047	<b>Huntingtin Protein (a.a. 181-810)</b>	Ms	1HU-4C8	IgG1,k	ELISA, WB, IHC, ICC, IP	Ha, Hu, Mk, Ms, Rb, Rt	100 ul	<b>465</b>
MAB-15858	<b>Huntingtin Protein (a.a. 1-82)</b>	Ms	5HU-2B4	IgG1,k	ELISA, WB, ICC, IHC	Hu	100 ul	<b>550</b>
MAB-94001	<b>Huntingtin Protein (a.a.115-129)</b>	Ms	1H6	IgG1,k	ELISA,WB,ICC,IHC	Hu	100 ul	<b>550</b>
MAB-11046	<b>Huntingtin Protein (a.a.1247-1646)</b>	Ms	HU-4E6	IgG2b	ELISA, WB, IHC, ICC, IP	Hu, Ms	100 ul	<b>465</b>
MAB-10825	<b>Huntingtin Protein (a.a.2146-2541)</b>	Ms	HU-2E8	IgG1	ELISA, WB, IHC, ICC	Hu, Mk	100 ul	<b>465</b>
MAB-94741	<b>Huntingtin Protein (a.a.2683-2979)</b>	Ms	4HU-2C1	IgG1,k	ELISA, WB, ICC	Hu	100 ul	<b>495</b>
AB-84416	<b>IBA1</b>	Ch	POLY	IgY	WB, IHC(P), IHC(F), IF, ICC	Hu, Ms, Rt	100 ul	<b>380</b>
ABE11111	<b>IBA1</b>	Rb	POLY	IgG	WB,,IF, ICC	Hu, Ms, Rt	100 ul	<b>280</b>
AB-84297	<b>IBA1</b>	Rb	POLY	IgG	WB, IF, IHC, ELISA	Hu, Ms, Rt	100 ug	<b>295</b>
MAB-94785	<b>IBA1</b>	Rb	EPR16589	IgG	WB, IF, ICC, IHC	Hu, Ms, Rt	100 ug	<b>295</b>

Cat.n.	Description	Host	Clone	Isotype	Applications	Species	Size	Price
ABE7963	<b>Internexin-α</b>	Rb	POLY	IgG	WB;IHC	Hu;Ms;Rt	100ug	<b>295</b>
MAB-94467	<b>KI-67</b>	Ms	Mib1	IgG1	IHC, WB, FC , ICC	Hu	100 ul	<b>295</b>
AB-83925	<b>Ki-67</b>	Ch	POLY	IgY	WB, IF, ICC	Hu Rt Ms,Mk	100 ul	<b>380</b>
AB-90972	<b>Ki-67</b>	Rb	POLY	IgG	WB, IF, ICC, IHC (P), IHC (F)	Hu, Ms, Rt	100 ug	<b>395</b>
ABE299	<b>Kv1.1</b>	Rb	POLY	IgG	WB, IHC	Hu, Rt, Ms	100ug	<b>295</b>
ABE2686	<b>KV1.1</b>	Rb	POLY	IgG	WB;ELISA;IHC	Hu;Ms;Rt	100ug	<b>295</b>
ABE308	<b>Kv1.3</b>	Rb	POLY	IgG	WB	Hu, Rt, Ms	100ug	<b>295</b>
ABE2687	<b>Kv1.3</b>	Rb	POLY	IgG	WB;IHC;IF;ELISA	Hu;Ms;Rt	100ug	<b>295</b>
ABE309	<b>Kv1.5</b>	Rb	POLY	IgG	WB	Hu	100ug	<b>295</b>
ABE2688	<b>KV1.5</b>	Rb	POLY	IgG	WB;ELISA;IHC	Hu;Ms;Rt	100ug	<b>295</b>
ABE310	<b>Kv1.8</b>	Rb	POLY	IgG	WB, IHC	Hu, Rt, Ms	100ug	<b>295</b>
ABE20686	<b>Kv1.8</b>	Rb	POLY	IgG	WB;IHC;IF	Hu;Rt;Ms	100ug	<b>295</b>
ABE311	<b>Kv10.1</b>	Rb	POLY	IgG	IHC	Hu, Rt, Ms	100ug	<b>295</b>
ABE20685	<b>Kv10.1</b>	Rb	POLY	IgG	IHC;IF	Hu;Rt;Ms	100ug	<b>295</b>
ABE312	<b>Kv10.2</b>	Rb	POLY	IgG	WB, IHC	Hu, Rt, Ms	100ug	<b>295</b>
ABE20684	<b>Kv10.2</b>	Rb	POLY	IgG	WB;IHC;IF	Hu;Rt;Ms	100ug	<b>295</b>
ABE313	<b>Kv11.1</b>	Rb	POLY	IgG	WB, IHC	Rt, Ms	100ug	<b>295</b>
ABE20683	<b>Kv11.1</b>	Rb	POLY	IgG	WB;IHC;IF	Rt;Ms	100ug	<b>295</b>
ABE314	<b>Kv11.3</b>	Rb	POLY	IgG	WB, IHC	Hu, Rt, Ms	100ug	<b>295</b>
ABE20682	<b>Kv11.3</b>	Rb	POLY	IgG	WB;IHC;IF	Hu;Rt;Ms	100ug	<b>295</b>
ABE19805	<b>KV115</b>	Rb	POLY	IgG	WB	Hu;Rt;Ms;	100ug	<b>295</b>
ABE19367	<b>KV124</b>	Rb	POLY	IgG	WB	Hu;Rt;Ms;	100ug	<b>295</b>
ABE19083	<b>KV125</b>	Rb	POLY	IgG	WB	Hu;Rt;Ms;	100ug	<b>295</b>
ABE8896	<b>Kv2.1</b>	Rb	POLY	IgG	WB;IHC	Hu;Ms;Rt	100ug	<b>295</b>
ABE5993	<b>Kv2.1</b>	Rb	POLY	IgG	IHC;IF;ELISA	Hu;Ms;Rt	100ug	<b>295</b>
ABE5994	<b>KV2.1</b>	Rb	POLY	IgG	WB;ELISA;IHC	Hu;Ms;Rt	100ug	<b>295</b>
ABE2689	<b>KV3.1</b>	Rb	POLY	IgG	WB;IHC;IF;ELISA	Hu;Ms;Rt	100ug	<b>295</b>
ABE2690	<b>KV3.2</b>	Rb	POLY	IgG	WB;IHC;IF;ELISA	Hu;Ms;Rt	100ug	<b>295</b>
ABE2691	<b>Kv3.4</b>	Rb	POLY	IgG	WB;IHC;IF;ELISA	Hu;Ms;Mk	100ug	<b>295</b>
ABE18862	<b>KV310</b>	Rb	POLY	IgG	WB	Hu;Rt;Ms;	100ug	<b>295</b>
ABE5996	<b>KV4.1</b>	Rb	POLY	IgG	WB;IHC;IF;ELISA	Hu;Ms	100ug	<b>295</b>
ABE5999	<b>Kv4.2</b>	Rb	POLY	IgG	IHC;IF;ELISA	Hu;Ms;Rt	100ug	<b>295</b>
ABE19152	<b>KV401</b>	Rb	POLY	IgG	WB	Hu;Rt;Ms;	100ug	<b>295</b>

Cat.n.	Description	Host	Clone	Isotype	Applications	Species	Size	Price
ABE4995	<b>KV8.2</b>	Rb	POLY	IgG	WB;IHC	Hu;Ms	100ug	<b>295</b>
ABE2692	<b>KV9.2</b>	Rb	POLY	IgG	WB;IHC	Hu;Ms;Rt	100ug	<b>295</b>
ABE2693	<b>KVβ.3</b>	Rb	POLY	IgG	WB;IHC;IF;ELISA	Hu;Ms;Rt	100ug	<b>295</b>
ABE307	<b>KVβ1</b>	Rb	POLY	IgG	IHC	Hu, Rt, Ms	100ug	<b>295</b>
ABE20681	<b>KVβ1</b>	Rb	POLY	IgG	IHC;IF	Hu;Rt;Ms	100ug	<b>295</b>
ABE18889	<b>KYNU</b>	Rb	POLY	IgG	WB	Hu;Ms;Rt	100ug	<b>295</b>
ABE9801	<b>MAP1A</b>	Rb	POLY	IgG	IHC;IF	Hu;Ms;Rt	100ug	<b>295</b>
ABE9802	<b>MAP1B</b>	Rb	POLY	IgG	IHC;IF	Hu;Rt;Ms	100ug	<b>295</b>
MAB-10784	<b>MAP-2ab</b>	Ms	AP20	IgG1	WB, IHC, ICC, ELISA	Hu, Pr, Ms	100 ug	<b>195</b>
MAB-10334	<b>MAP-2ab</b>	Ms	MT-01	IgG1	IP, WB, IHC, ICC, ELISA	Hu, Pr, Ms, Bv, Fe	100 ug	<b>195</b>
MAB-10745	<b>MAP-2ab</b>	Ms	MT-07	IgG1	IP, WB, IHC, ICC, ELISA	Hu, Pr, Ms	100 ug	<b>195</b>
MAB-10746	<b>MAP-2ab</b>	Ms	MT-08	IgG1	IP, WB, IHC, ICC, ELISA	Hu, Pr, Ms	100 ug	<b>195</b>
ABE6169	<b>MAP-2ab</b>	Rb	POLY	IgG	WB;IHC;IF;ELISA	Hu Rt Ms	100ug	<b>295</b>
AB-83851	<b>MAP-2ab</b>	Gt	POLY	IgG	WB, IF, ICC, IHC	Hu, Ms, Rt	100 ug	<b>450</b>
AB-10417	<b>MAP-2ab</b>	Ch	POLY	IgY	WB, IHC(P), IHC(F), ICC, IF, EIA	Hu, Rt, Ms, Bv, Mamm	100 ug	<b>380</b>
AB-83909	<b>MeCP2</b>	Ch	POLY	IgY	WB, IF, IHC	Hu Rt Ms,Mk	100 ug	<b>350</b>
MAB-94284	<b>MeCP2</b>	Ms	4F11	IgG1	WB, ICC, IF, IHC	Hu, Ms, Rt	100 ul	<b>395</b>
ABE020	<b>MeCP2</b>	Rb	POLY	IgG	WB	Hu	100ug	<b>295</b>
ABE2777	<b>Melanopsin</b>	Rb	POLY	IgG	WB;ELISA;IHC	Hu;Rt;Ms;	100ug	<b>295</b>
AB-84770	<b>mGluR1</b>	Rb	POLY	IgG	WB, IHC, FC	Hu, Ms, Rt	200 ug	<b>450</b>
ABE5672	<b>mGluR1</b>	Rb	POLY	IgG	IHC;IF;ELISA	Hu;Ms;Rt	100ug	<b>295</b>
ABE5674	<b>mGluR2</b>	Rb	POLY	IgG	IHC;IF;ELISA	Hu;Ms;Rt	100ug	<b>295</b>
ABE5675	<b>mGluR-2/3</b>	Rb	POLY	IgG	WB;IHC;IF;ELISA	Hu;Ms;Rt	100ug	<b>295</b>
AB2538	<b>mGluR3</b>	Rb	POLY	IgG	WB, IHC, IF	Hu, Ms, Rt	100 ug	<b>395</b>
ABE2785	<b>mGluR-4</b>	Rb	POLY	IgG	WB;IHC;IF;ELISA	Hu;Ms;Rt	100ug	<b>295</b>
ABE2786	<b>mGluR5</b>	Rb	POLY	IgG	WB;IHC;IF;ELISA	Hu;Ms;Rt	100ug	<b>295</b>
ABE5678	<b>mGluR-6</b>	Rb	POLY	IgG	WB;IHC;IF;ELISA	Hu;Rt;Ms;	100ug	<b>295</b>
ABE5679	<b>mGluR7</b>	Rb	POLY	IgG	WB;ELISA;IHC	Hu;Ms;Rt	100ug	<b>295</b>
ABE2787	<b>mGluR-7</b>	Rb	POLY	IgG	WB;IHC;IF;ELISA	Hu;Ms;Rt	100ug	<b>295</b>
ABE5680	<b>mGluR-8</b>	Rb	POLY	IgG	WB;IHC;IF;ELISA	Hu;Ms;Rt	100ug	<b>295</b>
ABE3078	<b>MOG /Myelin oligodendrocyte glycoprotein</b>	Rb	POLY	IgG	WB;IHC;IF;ELISA	Hu;Rt;Ms;	100ug	<b>295</b>
AB05267	<b>MOG /Myelin oligodendrocyte glycoprotein</b>	Rb	POLY	IgG	WB,IHC(P), IF, ELISA	Hu, Ms, Rt	100ug	<b>295</b>
AB3992	<b>Myelin Associated Glycoprotein (MAG)</b>	Rb	POLY	IgG	WB, IF , ICC	Ms, Rt	100 ug	<b>395</b>

Cat.n.	Description	Host	Clone	Isotype	Applications	Species	Size	Price
AB1664	<b>Myelin basic protein</b>	Rb	POLY	IgG	WB , IHC(P), IF, ICC	Hu, Ms, Rt	100 ul	<b>300</b>
ABS11226	<b>Myelin basic protein</b>	Rb	POLY	IgG	WB, IF/ICC, IHC, ELISA	Ms, Rt	100 ug	<b>295</b>
MAB-10660	<b>Myelin basic protein</b>	Ms	7D2	IgG1k	ICC IF, IHC, WB	Hu, Ms, Rt, Ct, Ch	100 ug	<b>395</b>
ABS12226	<b>Myelin basic protein</b>	Ms	7G7	IgG1	WB, IF, ICC, IHC	Hu, Rt, Ms,	100 ug	<b>295</b>
AB-84338	<b>Myelin basic protein</b>	Rb	POLY	IgG	WB, IF	Hu,Ms	100 ug	<b>290</b>
AB-83751	<b>Myelin basic protein</b>	Ch	POLY	IgG	WB, IF/ICC, IHC	Hu, Rt, Ms, Cw, Pg, Ho	100 ug	<b>380</b>
AB-84730	<b>Myelin basic protein</b>	Gt	POLY	IgG	WB, IF/ICC	Hu, Rt, Ms, Co, Pg	100 ug	<b>450</b>
ABS155685	<b>Nestin</b>	Ms	Rat-401	IgG1	WB, IHC, IF	Ms, Rt	100 ug	<b>295</b>
ABE10996	<b>Nestin</b>	Rb	POLY	IgG	WB;ELISA	Hu;Rt;Ms	100ug	<b>295</b>
MAB-10430	<b>Nestin</b>	Ms	10C2	IgG1	FC, IHC(P), ELISA, WB, IP, ICC	Hu	100 ug	<b>350</b>
AB11861	<b>Nestin</b>	Rb	POLY	IgG	WB, IHC(P), IF, ICC	Hu, Ms, Rt	100 ug	<b>300</b>
AB-84781	<b>Nestin</b>	Rb	POLY	IgG	WB, IHC, IF	Hu, Ms, Rt	100 ug	<b>295</b>
AB-10702	<b>Nestin</b>	Ch	POLY	IgG	IF,ICC, IHC, WB	Hu, Ms,Rt	100 ul	<b>380</b>
AB- 83750	<b>NeuN-FOX3</b>	Ch	POLY	IgY	WB, ICC, IF, IHC	Hu, Ms, Rt	100 ul	<b>380</b>
AB-84292	<b>NeuN-FOX3</b>	Gt	POLY	IgG	WB, ICC, IF, IHC(F)	Hu, Ms, Rt	100 ug	<b>450</b>
MAB-90228	<b>NeuN-FOX3</b>	Ms	N/A60	IgG1	WB, ICC, IF, IHC(F) ,IHC(P)	Hu, Rt, Ms,Bov, Pr	500ug	<b>380</b>
MAB-94161	<b>NeuN-FOX3</b>	Ms	A60	IgG1	WB, ICC, IF, IHC(F) ,IHC(P)	Hu, Rt, Ms,Bov, Pr	500ug	<b>380</b>
MAB-94416	<b>NeuN-FOX3</b>	Rb	D4G40	IgG	WB, ICC, IF, IHC(F)	Hu, Ms, Rt	100 UG	<b>295</b>
MAB-94417	<b>NeuN-FOX3</b>	Rb	D3S3I	IgG	WB, ICC, IF, IHC(F)	Hu, Ms, Rt	100 ug	<b>395</b>
ABS11138	<b>NeuN-FOX3</b>	Rb	POLY	IgG	WB,, IF, IHC(P)	Hu, Ms, Rt	100 ul	<b>295</b>
ABE5736	<b>Neuregulin-1 SMDF</b>	Rb	POLY	IgG	WB;IHC;IF;ELISA	Hu;Ms;Rt	100ug	<b>295</b>
ABE3945	<b>Neuregulin-2</b>	Rb	POLY	IgG	WB;IHC;IF;ELISA	Hu;Ms;Rt	100ug	<b>295</b>
ABE8415	<b>Neuregulin-3</b>	Rb	POLY	IgG	WB;IHC;IF;ELISA	Hu;Ms	100ug	<b>295</b>
ABE2926	<b>Neurensin-1</b>	Rb	POLY	IgG	WB;IHC;IF;ELISA	Hu;Ms;Rt	100ug	<b>295</b>
ABE8030	<b>Neurexin I</b>	Rb	POLY	IgG	WB;IHC	Hu;Ms;Rt	100ug	<b>295</b>
ABE8028	<b>Neurexin IIIβ</b>	Rb	POLY	IgG	WB;ELISA;IHC	Hu;Rt;Ms;	100ug	<b>295</b>
ABE5710	<b>Neurexophilin-1</b>	Rb	POLY	IgG	WB;IHC;IF;ELISA	Hu;Ms;Rt	100ug	<b>295</b>
ABE2927	<b>Neurexophilin-3</b>	Rb	POLY	IgG	WB;IHC;IF;ELISA	Hu;Ms;Rt	100ug	<b>295</b>
ABE2928	<b>Neurexophilin-4</b>	Rb	POLY	IgG	WB;IHC;IF;ELISA	Hu;Rt	100ug	<b>295</b>
ABE6361	<b>Neuro D</b>	Rb	POLY	IgG	WB;ELISA;IHC	Hu;Ms;Rt	100ug	<b>295</b>
ABE2929	<b>Neuro D2</b>	Rb	POLY	IgG	WB;IHC;IF;ELISA	Hu;Ms;Rt	100ug	<b>295</b>
ABE7722	<b>Neurocalcin δ</b>	Rb	POLY	IgG	IHC;IF;ELISA	Hu;Ms;Rt	100ug	<b>295</b>
ABE4869	<b>Neurocan</b>	Rb	POLY	IgG	WB;IHC	Hu;Rt;Ms;	100ug	<b>295</b>

Cat.n.	Description	Host	Clone	Isotype	Applications	Species	Size	Price
ABE2930	<b>Neurofibromin</b>	Rb	POLY	IgG	WB;IHC	Hu;Ms;Rt	100ug	<b>295</b>
AB-82371	<b>Neurofilament 68 kD</b>	Ch	POLY	IgG	ICC IF WB IHC(P), IHC(F)	Hu, Rt, Ms, Ch	100 ug	<b>380</b>
MAB-80125	<b>Neurofilament 68 kD</b>	Ms	NF-68	IgG2a	IHC, WB	Hu, Ms, Rt	100 ug	<b>295</b>
ABS115734	<b>Neurofilament 68 kD</b>	Rb	POLY	IgG	IF WB IHC(P), IHC(F)	Hu, Rt, Ms,	100 ug	<b>295</b>
MAB-94070	<b>Neurofilament Heavy (NF-H) (Phosphorylated)</b>	Ms	SMI-310	IgG1	ICC, ELISA, WB, IHC(P)	Mamm.	100 ug	<b>250</b>
MAB-94071	<b>Neurofilament Heavy (NF-H) (Non-phosphorylated)</b>	Ms	NF-05	IgG1	ELISA, WB, IHC(F)	Hu , Rt, Pig,	100 ug	<b>250</b>
MAB-94403	<b>Neurofilament Heavy (NF-H)</b>	Ms	9B12	IgG2b	WB, IF/ICC, IHC	Hu Rt Ms,Cw, Pg	100 ug	<b>395</b>
ABS12144	<b>Neurofilament Heavy (NF-H)</b>	Ms	NA4	IgG1k	ICC IF, IHC, WB	Ms , Rt	100 ug	<b>295</b>
AB-10684	<b>Neurofilament Heavy (NF-H)</b>	Rb	POLY	IgG	WB IHC(P)	Hu, Rt, Ms,	100 ul	<b>295</b>
AB-10680	<b>Neurofilament Heavy (NF-H)</b>	Ch	POLY	IgG	ICC IF WB IHC(P), IHC(F)	Hu, Rt, Ms, Ct, Ch	100 ug	<b>380</b>
AB-83926	<b>Neurofilament Light (NF-L)</b>	Ch	NF-L	IgY	WB, IF/ICC, IHC	Hu Rt Ms	100 ug	<b>380</b>
ABE3286	<b>Neurofilament Light (NF-L)</b>	Rb	POLY	IgG	WB, IHC, IF, ELISA	Hu, Ms, Rt	100 ug	<b>295</b>
MAB-94389	<b>Neurofilament Light (NF-L)</b>	Ms	1B11	IgG1	WB, IF, ICC	Hu Rt Ms,Cw, Pg	100 ug	<b>395</b>
AB-10686	<b>Neurofilament Medium (NF-M)</b>	Ch	POLY	IgG	ICC IF WB IHC(P), IHC(F)	Hu, Rt, Ms, Ch	100 ug	<b>380</b>
ABS111245	<b>Neurofilament Medium (NF-M)</b>	Rb	POLY	IgG	IF WB IHC(P)	Hu, Rt, Ms,	100 ul	<b>295</b>
ABS15763	<b>Neurofilament Medium (NF-M)</b>	Ms	3H11	IgG1k	IF, IHC, WB	Hu, Ms, Rt,	100 ug	<b>295</b>
MAB-10651	<b>Neurofilament Medium (NF-M) (Phosphos. and Nonphos.)</b>	Ms	NF-09	IgG2a	ICC, WB, IHC(P)	Mamm.	100 ug	<b>200</b>
ABE2931	<b>Neuroglycan C</b>	Rb	POLY	IgG	WB;IHC	Hu;Ms;Rt	100ug	<b>295</b>
ABE2932	<b>Neuromedin-S</b>	Rb	POLY	IgG	WB;IHC;IF;ELISA	Hu;Rt;Ms;	100ug	<b>295</b>
ABE2933	<b>Neuromedin-U</b>	Rb	POLY	IgG	WB;IHC;IF;ELISA	Hu;Rt;Ms;	100ug	<b>295</b>
ABE7917	<b>Neuron Navigator 1</b>	Rb	POLY	IgG	IHC;IF;ELISA	Hu;Ms	100ug	<b>295</b>
ABE7918	<b>Neuron Navigator 2</b>	Rb	POLY	IgG	IHC;IF;ELISA	Hu;Rt;Ms;	100ug	<b>295</b>
ABE1165	<b>Neuron Specific Enolase (NSE)</b>	Ms	25F	IgG	WB, IHC	Hu, Rt, Ms	100 ug	<b>295</b>
AB-84260	<b>Neuron Specific Enolase (NSE)</b>	Ch	POLY	IgY	ICC IF WB , IHC(F)	Hu, Ms, Rt	100 ug	<b>380</b>
ABE2264	<b>Neuron Specific Enolase (NSE)</b>	Rb	POLY	IgG	ICC IF WB IHC(P), IHC(F)	Hu, Ms, Rt	100ul	<b>295</b>
ABE6410	<b>Neuronal PAS1</b>	Rb	POLY	IgG	WB;IHC	Hu;Rt;Ms;	100ug	<b>295</b>
ABE6452	<b>Neurophysin I / Oxytocin</b>	Rb	POLY	IgG	WB;IHC;IF;ELISA	Hu;Rt	100ug	<b>295</b>
ABE4182	<b>Neuropilin</b>	Rb	POLY	IgG	WB;IHC;IF;ELISA	Hu;Ms;Rt	100ug	<b>295</b>
ABE2934	<b>Neuropilin-1</b>	Rb	POLY	IgG	WB;IHC;IF;ELISA	Hu;Ms;Rt	100ug	<b>295</b>
ABE3960	<b>Neuropilin-2</b>	Rb	POLY	IgG	WB;IHC;IF;ELISA	Hu;Ms;Rt	100ug	<b>295</b>
ABE5530	<b>Neuroplastin</b>	Rb	POLY	IgG	IHC;IF;ELISA	Hu;Ms;Rt	100ug	<b>295</b>
ABE5229	<b>Neuropsin /Opsin 5</b>	Rb	POLY	IgG	WB;ELISA;IHC	Hu;Ms	100ug	<b>295</b>
ABE4265	<b>Neurotensin</b>	Rb	POLY	IgG	WB;ELISA	Hu;Ms;Rt	100ug	<b>295</b>

Cat.n.	Description	Host	Clone	Isotype	Applications	Species	Size	Price
ABE2935	<b>Neurotrimin</b>	Rb	POLY	IgG	WB;IHC;IF;ELISA	Hu;Rt;Ms;	100ug	<b>295</b>
AB3592	<b>NG2/ CSPG4</b>	Rb	POLY	IgG	WB, IF	Hu, Ms, Rt	100 ug	<b>395</b>
AB-84252	<b>NG2/ CSPG4</b>	Rb	POLY	IgG	WB,IHC-P	Hu, Ms, Rt	100 ug	<b>295</b>
ABE2958	<b>NGF</b>	Rb	POLY	IgG	WB;IHC;IF;ELISA	Hu;Ms;Rt	100ug	<b>295</b>
MAB-11002	<b>NGF p75 Receptor</b>	Ms	NGFR5	IgG1	IHC(P), ICC, WB, IP,IF, FC	Hu	100 ug	<b>275</b>
ABE2960	<b>NGF p75 Receptor</b>	Rb	D4B3	IgG	WB,IF	Hu, Ms, Rt	100 ug	<b>295</b>
MAB-94787	<b>NGF p75 Receptor</b>	Rb	DBO-14	IgG	WB, ICC, IHC, IF, IP	Hu, Ms, Rt	200 ug	<b>450</b>
AB20772	<b>NK2 / Substance P</b>	Rb	POLY	IgG	WB, IF, ICC	Hu	100ug	<b>395</b>
ABE7333	<b>NK-1R /Substance-P receptor</b>	Rb	POLY	IgG	WB;IF;ELISA	Hu;Ms;Rt	100ug	<b>295</b>
ABE7328	<b>NK-2R /Substance-K receptor</b>	Rb	POLY	IgG	WB;IF;ELISA	Hu;Rt;Ms;	100ug	<b>295</b>
ABE2964	<b>NK-3R /Neuromedin-K receptor</b>	Rb	POLY	IgG	WB;IF;ELISA	Hu;Ms;Rt	100ug	<b>295</b>
ABE5651	<b>NMDA Receptor 1</b>	Rb	POLY	IgG	WB;IHC;IF;ELISA	Hu;Ms;Rt	100ug	<b>295</b>
ABE5653	<b>NMDA Receptor 2A</b>	Rb	POLY	IgG	IHC;IF;ELISA	Hu;Ms;Rt	100ug	<b>295</b>
ABE5659	<b>NMDA Receptor 2B</b>	Rb	POLY	IgG	WB;IHC;IF;ELISA	Hu;Ms;Rt	100ug	<b>295</b>
ABE5660	<b>NMDA Receptor 2C</b>	Rb	POLY	IgG	IHC;IF;ELISA	Hu;Rt;Ms;	100ug	<b>295</b>
ABE5662	<b>NMDA Receptor 2D</b>	Rb	POLY	IgG	WB;ELISA	Hu;Ms;Rt;Mk	100ug	<b>295</b>
ABE 19527	<b>NMNA2</b>	Rb	POLY	IgG	WB	Hu;Ms;Rt	100ug	<b>295</b>
ABE2972	<b>NOS1(n/NOS)</b>	Rb	POLY	IgG	WB;IHC;IF;ELISA	Hu;Ms;Rt	100ug	<b>295</b>
ABE2973	<b>NOS2(l/NOS)</b>	Rb	POLY	IgG	IF;WB;IHC;ELISA	Hu;Ms;Rt	100ug	<b>295</b>
ABE6402	<b>NOS3(e/NOS)</b>	Rb	POLY	IgG	IF;WB;IHC;ELISA	Hu;Ms;Rt	100ug	<b>295</b>
ABE9929	<b>NOSIP</b>	Rb	POLY	IgG	WB;ELISA	Hu;Ms	100ug	<b>295</b>
ABE6406	<b>NPY / Neuropeptide Y</b>	Rb	POLY	IgG	WB;IHC;IF;ELISA	Hu;Ms;Rt	100ug	<b>295</b>
ABE6415	<b>NPY1-R Neuropeptide Y Receptor 1</b>	Rb	POLY	IgG	WB;IF;ELISA	Hu;Ms;Rt	100ug	<b>295</b>
ABE2981	<b>NPY2-R Neuropeptide Y Receptor 2</b>	Rb	POLY	IgG	WB;IF;ELISA	Hu;Ms;Rt	100ug	<b>295</b>
ABE11510	<b>NPY4R Neuropeptide Y Receptor 4</b>	Rb	POLY	IgG	WB;ELISA	Hu;Rt;Ms;	100ug	<b>295</b>
ABE2982	<b>NPY5-R Neuropeptide Y Receptor 5</b>	Rb	POLY	IgG	WB;IHC;IF;ELISA	Hu;Ms;Rt	100ug	<b>295</b>
ABE11735	<b>NPY6R Neuropeptide Y Receptor 6</b>	Rb	POLY	IgG	WB;ELISA	Hu;Ms	100ug	<b>295</b>
ABE2983	<b>NQO1</b>	Rb	POLY	IgG	WB;IF;ELISA	Hu;Rt;Ms;	100ug	<b>295</b>
ABE10186	<b>NQO2</b>	Rb	POLY	IgG	WB;ELISA	Hu;Rt;Ms	100ug	<b>295</b>
ABE11877	<b>NUCL / Nucleolin</b>	Rb	POLY	IgG	WB;ELISA	Hu;Rt;Ms;	100ug	<b>295</b>
MAB-94310	<b>Nuclei</b>	Ms	235-1	IgG1	IF, IHC(F) ICC. IP	Hu	100 ul	<b>395</b>
MAB-94310-4	<b>Nuclei Aleva Fluor488</b>	Ms	235-1	IgG1	FC ,IF, IHC(F) ICC.	Hu	100 ul	<b>360</b>
ABE2991	<b>Nucleophosmin</b>	Rb	POLY	IgG	WB;IHC;IF;ELISA	Hu;Ms;Rt;Mk	100ug	<b>295</b>



Cat.n.	Description	Host	Clone	Isotype	Applications	Species	Size	Price
ABE11811	<b>Occludin</b>	Rb	POLY	IgG	WB IF;ELISA	Hu;Ms;Rt	100ug	<b>295</b>
ABE1089	<b>Oct1</b>	Ms	IS5451	IgG1	WB, IHC	Hu	100ug	<b>295</b>
ABE3000	<b>Oct-1</b>	Rb	POLY	IgG	WB;IHC;IF;ELISA	Hu;Ms;Rt	100ug	<b>295</b>
ABE3001	<b>Oct-2</b>	Rb	POLY	IgG	WB;IHC;IF;ELISA	Hu;Ms;Mk	100ug	<b>295</b>
ABE3002	<b>OCT3</b>	Rb	POLY	IgG	WB;ELISA	Hu;Rt;Ms;	100ug	<b>295</b>
ABE3003	<b>Oct-3/4</b>	Rb	POLY	IgG	WB;IHC;IF;ELISA	Hu;Ms;Rt	100ug	<b>295</b>
FNab05964	<b>Oct-4</b>	Ms	OH7	IgG1	WB, IHC(P)	Hu,Ms	100 ug	<b>330</b>
ABE3004	<b>Oct-6</b>	Rb	POLY	IgG	WB;ELISA	Hu;Ms;Rt	100ug	<b>295</b>
ABE11116	<b>OLIG 1</b>	Rb	POLY	IgG	WB;ELISA	Hu;Rt;Ms;	100ug	<b>295</b>
AB-84295	<b>OLIG 2</b>	Rb	POLY	IgG	IHC(F),IHC(P),IP,IF, WB	Hu,Ms,Rt	100 ug	<b>295</b>
ABE20421	<b>OLIG2</b>	Rb	POLY	IgG	WB; ELISA	Hu;Ms;Rt	100ug	<b>295</b>
ABE10942	<b>OLIG3</b>	Rb	POLY	IgG	WB;ELISA	Hu;Ms	100ug	<b>295</b>
ABE11225	<b>OLR1</b>	Rb	POLY	IgG	WB;ELISA	Hu;Rt;Ms	100ug	<b>295</b>
ABE10911	<b>OPT /Optineurin</b>	Rb	POLY	IgG	WB;ELISA	Hu;Rt;Ms;	100ug	<b>295</b>
ABE11427	<b>OREX</b>	Rb	POLY	IgG	WB;ELISA	Hu;Ms;Rt	100ug	<b>295</b>
ABE5725	<b>Orexin R-1</b>	Rb	POLY	IgG	WB;ELISA	Hu;Ms;Rt	100ug	<b>295</b>
ABE5726	<b>Orexin R-1</b>	Rb	POLY	IgG	IF;ELISA	Hu;Ms;Rt	100ug	<b>295</b>
ABE14354	<b>OTX1</b>	Rb	POLY	IgG	WB	Hu; Ms;Rt	100ug	<b>295</b>
AB4351	<b>Otx2</b>	Rb	POLY	IgG	WB, IHC(F), IHC(P), IP, FC	Hu,Ms,Rt	100 ug	<b>295</b>
AB5719	<b>Otx3</b>	Rb	POLY	IgG	WB, IHC(P)	Hu,Ms,Rt	100 ug	<b>290</b>
ABE10227	<b>P2R3A</b>	Rb	POLY	IgG	WB;ELISA	Hu;Ms	100ug	<b>295</b>
ABE9967	<b>P2RX1</b>	Rb	POLY	IgG	WB;ELISA	Hu;Ms;Rt	100ug	<b>295</b>
ABE11813	<b>P2RX2</b>	Rb	POLY	IgG	WB;ELISA	Hu;Rt;Ms;	100ug	<b>295</b>
ABE3941	<b>P2RX3</b>	Rb	POLY	IgG	WB;IHC;IF;ELISA	Hu;Ms;Rt	100ug	<b>295</b>
ABE9968	<b>P2RX4</b>	Rb	POLY	IgG	WB;ELISA	Hu;Rt;Ms	100ug	<b>295</b>
ABE11619	<b>P2RY1</b>	Rb	POLY	IgG	WB;ELISA	Hu;Rt;Ms	100ug	<b>295</b>
ABE6627	<b>P2RY13</b>	Rb	POLY	IgG	WB;IHC;IF;ELISA	Hu;Rt	100ug	<b>295</b>
ABE11620	<b>P2RY2</b>	Rb	POLY	IgG	WB;ELISA	Hu;Rt;Ms	100ug	<b>295</b>
ABE11622	<b>P2RY6</b>	Rb	POLY	IgG	WB;ELISA	Hu;Rt;Ms	100ug	<b>295</b>
ABE3105	<b>P2RY8</b>	Rb	POLY	IgG	WB;IF;ELISA	Hu;Rt;Ms;	100ug	<b>295</b>
ABE11624	<b>P2Y10</b>	Rb	POLY	IgG	WB;ELISA	Hu;Ms	100ug	<b>295</b>
ABE3106	<b>P2Y11</b>	Rb	POLY	IgG	WB;ELISA	Hu;Rt;Ms;	100ug	<b>295</b>
ABE11625	<b>P2Y12</b>	Rb	POLY	IgG	WB;ELISA	Hu;Rt;Ms	100ug	<b>295</b>

Cat.n.	Description	Host	Clone	Isotype	Applications	Species	Size	Price
ABE3107	<b>P2Y4</b>	Rb	POLY	IgG	WB;IF;ELISA	Hu;Ms;Rt	100ug	<b>295</b>
ABE6479	<b>PARK2</b>	Rb	POLY	IgG	WB;IHC;IF;ELISA	Hu;Ms;Rt	100ug	<b>295</b>
ABE3150	<b>PARK7</b>	Rb	POLY	IgG	WB;IHC;IF;ELISA	Hu;Ms	100ug	<b>295</b>
ABE3151	<b>PARKIN</b>	Rb	POLY	IgG	WB;IHC;IF;ELISA	Hu;Ms;Rt;Ch	100ug	<b>295</b>
AB19098	<b>Parvalbumin</b>	Rb	POLY	IgG	WB, IHC, IF, ICC	Hu, Ms, Rt	100 ul	<b>395</b>
AB-83912	<b>Parvalbumin</b>	Ch	POLY	IgY	WB, IF, ICC, IHC	Hu Rt Ms	100 ug	<b>380</b>
MAB-94390	<b>Parvalbumin</b>	Ms	3C9	IgG1	WB, IF, ICC, IHC	Hu Rt Ms	100 ug	<b>395</b>
ABE6480	<b>Pax-1</b>	Rb	POLY	IgG	WB;IHC;IF;ELISA	Hu;Rt;Ms;	100ug	<b>295</b>
ABE3152	<b>Pax-2</b>	Rb	POLY	IgG	WB;IHC;IF;ELISA	Hu;Ms	100ug	<b>295</b>
ABE11259	<b>PAX3</b>	Rb	POLY	IgG	WB;ELISA	Hu;Ms	100ug	<b>295</b>
ABE3153	<b>Pax-5</b>	Rb	POLY	IgG	WB;ELISA	Hu;Ms	100ug	<b>295</b>
ABE4042	<b>Pax-5</b>	Rb	POLY	IgG	WB;IHC;IF;ELISA	Hu;Ms	100ug	<b>295</b>
ABE20408	<b>PAX6</b>	Rb	POLY	IgG	WB; ELISA	Hu;Rt;Ms;	100ug	<b>295</b>
ABE10905	<b>PAX7</b>	Rb	POLY	IgG	WB;ELISA	Hu;Ms	100ug	<b>295</b>
ABE3154	<b>Pax-8</b>	Rb	POLY	IgG	WB;IHC;IF;ELISA	Hu;Ms;Rt	100ug	<b>295</b>
ABE3155	<b>Pax-9</b>	Rb	POLY	IgG	WB;ELISA	Hu;Ms;Rt	100ug	<b>295</b>
ABE20858	<b>Peripherin</b>	Rb	POLY	IgG	IHC;WB	Hu; Ms;Rt	100ug	<b>295</b>
ABE14062	<b>PLP2</b>	Rb	POLY	IgG	WB;ELISA;IHC	Hu; Ms;Rt	100ug	<b>295</b>
MAB-1574	<b>Polyglutamine</b>	Ms	5Tf1-1C2	IgG1k	WB, IP, IHC(P), IHC(F), ICC, EIA	Hu	100 ul	<b>495</b>
ABE6847	<b>Presenilin 1</b>	Rb	POLY	IgG	WB;IHC;IF;ELISA	Hu;Ms;Rt	100ug	<b>295</b>
ABE20221	<b>Presenilin 2</b>	Rb	POLY	IgG	WB;IHC	Hu;Ms;Rt	100ug	<b>295</b>
ABE5008	<b>PSD-95 MAGUK Scaffold Protein</b>	Rb	POLY	IgG	WB;ELISA	Hu;Ms;Rt	100ug	<b>295</b>
ABE3320	<b>RAGE</b>	Rb	POLY	IgG	WB;IHC;IF;ELISA	Hu;Rt;Ms;	100ug	<b>295</b>
ABE5013	<b>RAGE</b>	Rb	POLY	IgG	WB;IHC;IF;ELISA	Hu;Rt;Ms;	100ug	<b>295</b>
ABE7018	<b>Recoverin</b>	Rb	POLY	IgG	WB;IHC;IF;ELISA	Hu;Ms	100ug	<b>295</b>
ABE3354	<b>Rhodopsin</b>	Rb	POLY	IgG	WB;IHC;IF;ELISA	Hu;Ms;Rt	100ug	<b>295</b>
ABE7837	<b>RUNX1</b>	Rb	POLY	IgG	WB;IHC;IF;ELISA	Hu;Ms;Rt	100ug	<b>295</b>
ABE4086	<b>RUNX2</b>	Rb	POLY	IgG	IF;WB;ELISA	Hu;Ms;Rt;Dog	100ug	<b>295</b>
ABE3400	<b>RUNX3</b>	Rb	POLY	IgG	WB;ELISA	Hu;Ms	100ug	<b>295</b>
ABE20636	<b>S100</b>	Rb	POLY	IgG	WB;IHC;IF	Hu;Rt;Ms	100ug	<b>295</b>
ABE3402	<b>S-100 Alfa</b>	Rb	POLY	IgG	WB;IHC;IF;ELISA	Hu;Ms;Rt	100ug	<b>295</b>
ABE254	<b>S100 Beta</b>	Rb	POLY	IgG	WB, IHC	Hu, Rt, Ms	100ug	<b>295</b>
ABE20635	<b>S100 Beta</b>	Rb	POLY	IgG	WB;IHC;IF	Hu;Rt;Ms	100ug	<b>295</b>

Cat.n.	Description	Host	Clone	Isotype	Applications	Species	Size	Price
ABE11451	<b>Serotonin Receptor 3B</b>	Rb	POLY	IgG	WB;ELISA	Hu;Ms;Rt	100ug	<b>295</b>
ABE11452	<b>Serotonin Receptor 3C</b>	Rb	POLY	IgG	WB;ELISA	Hu;Ms;Rt	100ug	<b>295</b>
ABE3489	<b>Serotonin Receptor-1A</b>	Rb	POLY	IgG	WB;IHC;IF;ELISA	Hu;Ms;Rt	100ug	<b>295</b>
ABE5799	<b>Serotonin Receptor-1B</b>	Rb	POLY	IgG	WB;IHC;IF;ELISA	Hu;Ms;Rt	100ug	<b>295</b>
ABE8353	<b>Serotonin Receptor-1D</b>	Rb	POLY	IgG	WB;IHC;IF;ELISA	Hu;Ms;Rt	100ug	<b>295</b>
ABE3490	<b>Serotonin Receptor-1E</b>	Rb	POLY	IgG	IF;ELISA;IHC	Hu;Rt;Ms;	100ug	<b>295</b>
ABE3491	<b>Serotonin Receptor-1F</b>	Rb	POLY	IgG	WB;ELISA;IHC	Hu;Ms;Rt;Mk	100ug	<b>295</b>
ABE5800	<b>Serotonin Receptor-2A</b>	Rb	POLY	IgG	IHC;IF;ELISA	Hu;Rt;Ms;	100ug	<b>295</b>
ABE3492	<b>Serotonin Receptor-2B</b>	Rb	POLY	IgG	WB;IF;ELISA	Hu;Rt;Ms;	100ug	<b>295</b>
ABE5802	<b>Serotonin Receptor-2C</b>	Rb	POLY	IgG	WB;IHC;IF;ELISA	Hu;Ms;Rt	100ug	<b>295</b>
ABE3493	<b>Serotonin Receptor-3A</b>	Rb	POLY	IgG	WB;IHC;IF;ELISA	Hu;Rt;Ms;	100ug	<b>295</b>
ABE5108	<b>Serotonin Receptor-3D</b>	Rb	POLY	IgG	WB;IF;ELISA	Hu;Rt;Ms;	100ug	<b>295</b>
ABE3494	<b>Serotonin Receptor-4</b>	Rb	POLY	IgG	WB;IHC;IF;ELISA	Hu;Ms;Rt	100ug	<b>295</b>
ABE5805	<b>Serotonin Receptor-5A</b>	Rb	POLY	IgG	WB;IF;ELISA	Hu;Rt;Ms;	100ug	<b>295</b>
ABE4399	<b>Serotonin Receptor-5B</b>	Rb	POLY	IgG	WB;IF;ELISA	Ms;Rt	100ug	<b>295</b>
ABE5806	<b>Serotonin Receptor-6</b>	Rb	POLY	IgG	WB;ELISA	Hu;Ms;Rt	100ug	<b>295</b>
ABE5807	<b>Serotonin Receptor-7</b>	Rb	POLY	IgG	IF;ELISA	Hu;Ms;Rt	100ug	<b>295</b>
ABE20253	<b>Serotonin Receptor-A1</b>	Rb	POLY	IgG	WB; ELISA	Hu;Rt;Ms;	100ug	<b>295</b>
ABE13189	<b>Serotonin Transporter ( SERT )</b>	Rb	POLY	IgG	WB, IF, IHC	Hu, Ms, Rt	100 ug	<b>295</b>
ABE3961	<b>SNAP 23</b>	Rb	POLY	IgG	WB;IHC;IF;ELISA	Hu;Rt;Ms;	100ug	<b>295</b>
ABE7246	<b>SNAP 25</b>	Rb	POLY	IgG	WB;IHC;IF;ELISA	Hu;Ms;Rt	100ug	<b>295</b>
ABE20629	<b>SOD1</b>	Rb	POLY	IgG	WB;IHC;IF	Hu;Ms;Rt	100ug	<b>295</b>
ABE4305	<b>SOD2</b>	Rb	POLY	IgG	WB;IHC;IF;ELISA	Hu;Ms;Rt	100ug	<b>295</b>
ABE3479	<b>Somatostatin</b>	Rb	POLY	IgG	WB;IHC;IF;ELISA	Hu;Ms;Rt	100ug	<b>295</b>
ABE7291	<b>Somatostatin Receptor 1</b>	Rb	POLY	IgG	WB;IHC;IF	Hu;Ms;Rt	100ug	<b>295</b>
ABE8442	<b>Somatostatin Receptor 2</b>	Rb	POLY	IgG	WB;	Hu;Ms;Rt	100ul	<b>295</b>
AB3135	<b>Somatostatin Receptor 2</b>	Rb	POLY	IgG	WB;IF;ELISA	Hu;Ms;Rt	100ul	<b>320</b>
ABE7292	<b>Somatostatin Receptor 4</b>	Rb	POLY	IgG	WB	Hu;Ms;Rt	100ug	<b>295</b>
AB8698	<b>Somatostatin Receptor 5</b>	Rb	POLY	IgG	WB;ELISA;IHC	Hu;Ms;Rt	100ug	<b>360</b>
AB3086	<b>SOX1</b>	Rb	POLY	IgG	WB, IHC	Hu, Ms, Rt	100 ug	<b>395</b>
ABE10880	<b>SOX1</b>	Rb	POLY	IgG	WB;ELISA	Hu;Ms	100ug	<b>295</b>
MAB-10148	<b>SOX2</b>	Ms	1B5	IgG	WB, IHC(P)	Hu,Ms,	100 ug	<b>295</b>
AB-81156	<b>SOX2</b>	Rb	POLY	IgG	WB, IHC(P) IHC(F) IF ,ICC	Hu,Ms,Rt	100 ug	<b>295</b>

Cat.n.	Description	Host	Clone	Isotype	Applications	Species	Size	Price
AB0561	<b>SOX2</b>	Rb	POLY	IgG	WB, IHC(P) IHC(F) IF ,ICC	Hu,Ms,Rt	100 ug	<b>330</b>
ABE10879	<b>SOX3</b>	Rb	POLY	IgG	WB;ELISA	Hu;Ms	100ug	<b>295</b>
ABE10780	<b>SOX4</b>	Rb	POLY	IgG	WB;ELISA	Hu;Ms	100ug	<b>295</b>
ABE13005	<b>SOX5</b>	Rb	POLY	IgG	WB	Hu; Ms	100ug	<b>295</b>
ABE6731	<b>Sox-6</b>	Rb	POLY	IgG	WB;IHC;IF;ELISA	Hu;Ms;Rt;Mk	100ug	<b>295</b>
ABE9090	<b>SOX7</b>	Rb	POLY	IgG	WB;ELISA	Hu;Ms	100ug	<b>295</b>
ABE3480	<b>SOX8/9/17/18</b>	Rb	POLY	IgG	WB;IHC;IF;ELISA	Hu;Ms;Mk	100ug	<b>295</b>
ABE3481	<b>SOX9</b>	Rb	POLY	IgG	WB;IHC;IF;ELISA	Hu;Ms;Rt	100ug	<b>295</b>
AB8635	<b>SOX10</b>	Rb	POLY	IgG	WB, IHC(P)	Hu,Ms,Rt	100 ug	<b>395</b>
AB-84777	<b>SOX10</b>	Rb	POLY	IgG	WB,FC	Hu, Ms, Rt	100 ul	<b>450</b>
ABE10980	<b>SOX10</b>	Rb	POLY	IgG	WB;ELISA	Hu;Rt;Ms	100ug	<b>295</b>
ABE11939	<b>SOX11</b>	Rb	POLY	IgG	WB;ELISA	Hu;Ms;Rt	100ug	<b>295</b>
ABE7255	<b>SOX12</b>	Rb	POLY	IgG	IHC;IF;ELISA	Hu;Ms	100ug	<b>295</b>
ABE13011	<b>SOX13</b>	Rb	POLY	IgG	WB;ELISA;IHC	Hu; Ms	100ug	<b>295</b>
AB7217	<b>SOX14</b>	Rb	POLY	IgG	WB, IHC(P), IF ,ICC	Hu, Ms, Rt	100 ug	<b>395</b>
ABE11211	<b>SOX15</b>	Rb	POLY	IgG	WB;ELISA	Hu;Ms	100ug	<b>295</b>
ABE3785	<b>Sox-17</b>	Rb	POLY	IgG	WB;ELISA;IHC	Hu;Ms	100ug	<b>295</b>
ABE9111	<b>SOX21</b>	Rb	POLY	IgG	WB;ELISA	Hu;Ms	100ug	<b>295</b>
ABE7262	<b>Spectrin <math>\beta</math> II</b>	Rb	POLY	IgG	WB;IHC;IF;ELISA	Hu;Ms;Rt	100ug	<b>295</b>
ABE6517	<b>Spectrin <math>\beta</math> V</b>	Rb	POLY	IgG	IHC;IF;ELISA	Hu;Rt;Ms;	100ug	<b>295</b>
ABE3531	<b>Synapsin 1</b>	Rb	POLY	IgG	WB, IHC(P) , IF	Hu, Ms, Rt	100 ul	<b>295</b>
ABE7327	<b>Synapsin 1</b>	Rb	POLY	IgG	WB;IHC;IF;ELISA	Hu;Ms;Rt	100ug	<b>295</b>
ABE8411	<b>Synapsin 1</b>	Rb	POLY	IgG	WB;ELISA;IHC	Hu;Ms;Rt	100ug	<b>295</b>
ABE9013	<b>Synapsin 2</b>	Rb	POLY	IgG	WB;ELISA	Hu;Ms;Rt	100ug	<b>295</b>
ABE10327	<b>Synapsin 3</b>	Rb	POLY	IgG	WB;ELISA	Hu;Rt;Ms	100ug	<b>295</b>
ABE3543	<b>Synaptophysin</b>	Rb	POLY	IgG	WB;IHC;IF;ELISA	Hu;Ms;Rt	100ug	<b>295</b>
ABE3532	<b>Synaptotagmin</b>	Rb	POLY	IgG	WB;IHC;IF;ELISA	Hu;Ms;Rt	100ug	<b>295</b>
ABE3533	<b>Synaptotagmin</b>	Rb	POLY	IgG	WB;IHC;IF;ELISA	Hu;Ms;Rt	100ug	<b>295</b>
ABE10331	<b>Synaptotagmin 12</b>	Rb	POLY	IgG	WB;ELISA	Hu;Rt;Ms	100ug	<b>295</b>
ABE10333	<b>Synaptotagmin 15</b>	Rb	POLY	IgG	WB;ELISA	Hu;Rt;Ms	100ug	<b>295</b>
ABE9241	<b>Synaptotagmin 2</b>	Rb	POLY	IgG	WB;ELISA	Hu;Ms;Rt	100ug	<b>295</b>
ABE10334	<b>Synaptotagmin 3</b>	Rb	POLY	IgG	WB;ELISA	Hu;Rt;Ms	100ug	<b>295</b>
ABE10335	<b>Synaptotagmin 4</b>	Rb	POLY	IgG	WB;ELISA	Hu;Rt;Ms;	100ug	<b>295</b>

Cat.n.	Description	Host	Clone	Isotype	Applications	Species	Size	Price
ABE10336	<b>Synaptotagmin 5</b>	Rb	POLY	IgG	WB;ELISA	Hu;Rt;Ms	100ug	<b>295</b>
ABE10337	<b>Synaptotagmin 7</b>	Rb	POLY	IgG	WB;ELISA	Hu;Ms	100ug	<b>295</b>
ABE10338	<b>Synaptotagmin 8</b>	Rb	POLY	IgG	WB;ELISA	Hu;Rt;Ms;	100ug	<b>295</b>
ABE10339	<b>Synaptotagmin 9</b>	Rb	POLY	IgG	WB;ELISA	Hu;Rt;Ms	100ug	<b>295</b>
ABE5822	<b>Synaptotagmin 10</b>	Rb	POLY	IgG	WB;IHC	Hu;Ms;Rt	100ug	<b>295</b>
ABE3534	<b>Synaptotagmin 11</b>	Rb	POLY	IgG	WB;ELISA	Hu;Ms;Rt	100ug	<b>295</b>
ABE3535	<b>Synaptotagmin 13</b>	Rb	POLY	IgG	WB;ELISA	Hu;Ms;Rt	100ug	<b>295</b>
ABE10332	<b>Synaptotagmin 14</b>	Rb	POLY	IgG	WB;ELISA	Hu;Ms	100ug	<b>295</b>
ABE7713	<b>Synaptotagmin 16</b>	Rb	POLY	IgG	WB;ELISA	Hu;Rt;Ms;	100ug	<b>295</b>
ABE3537	<b>Syntaxin 1</b>	Rb	POLY	IgG	WB;IHC;IF;ELISA	Hu;Ms;Rt;Mk	100ug	<b>295</b>
ABE4170	<b>Syntaxin 1</b>	Rb	POLY	IgG	WB;IHC;IF;ELISA	Hu;Ms;Rt	100ug	<b>295</b>
ABE8425	<b>Synuclein Alpha</b>	Rb	POLY	IgG	WB;IHC;IF;ELISA	Hu;Ms;Rt	100ug	<b>295</b>
MAB-94574	<b>Synuclein Alpha</b>	Ms	5C6	IgG1	WB, IHC(P)	Hu, Ms, Rt	100 ug	<b>295</b>
MAB-94093	<b>Synuclein Alpha</b>	Ms	2A7	IgG1	WB, IF, ICC, IHC	Hu, Ho, Cw, Pg, Ch, Rt, Ms	100 ug	<b>395</b>
ABE3541	<b>Synuclein Beta</b>	Rb	POLY	IgG	WB;IHC;IF;ELISA	Hu;Ms;Rt	100ug	<b>295</b>
MAB-94667	<b>Synuclein Beta</b>	Ms	6A10	IgG1	WB, IF, ICC, IHC	Hu, Ho, Cw, Pg, Ch, Rt, Ms	100 ug	<b>395</b>
ABE3542	<b>Synuclein Gamma</b>	Rb	POLY	IgG	WB;IHC;IF;ELISA	Hu;Rt;Ms;	100ug	<b>295</b>
ABE3553	<b>TAF15</b>	Rb	POLY	IgG	WB;IHC;IF;ELISA	Hu;Ms	100ug	<b>295</b>
ABE1321	<b>Tau (10E3)</b>	Ms	1E3	IgG	WB, IHC	Hu, Rt, Ms	100 ug	<b>295</b>
ABE10572	<b>TBR1</b>	Rb	POLY	IgG	WB;ELISA	Hu;Ms	100ug	<b>295</b>
ABE2266	<b>TBR2 / EOMES</b>	Rb	POLY	IgG	WB, ELISA	Hu, Ms	100 ug	<b>295</b>
AB-08573	<b>TDP43</b>	Rb	POLY	IgG	WB, IHC, IF, ICC, IP ,FC	Hu, Ms, Rt	100 ug	<b>295</b>
AB19123	<b>TDP43</b>	Rb	POLY	IgG	WB, IHC, IF, ICC, CHIP	Hu, Ms, Rt	100 ug	<b>395</b>
MAB-94326	<b>TDP43</b>	Ms	3H8	IgG1	WB, IHC(P), IHC(F), IF, ICC	Hu, Ms, Rt,Cw, Pg	100 ug	<b>395</b>
MAB-08577	<b>TDP43</b>	Ms	200	IgG2a	ELISA, IP, FC, WB, IHC	Hu,	100 ug	<b>295</b>
AB-84430	<b>TMEM119</b>	Rb	POLY	IgG	WB, IHC,	Hu, Ms, Rt	100 ug	<b>295</b>
AB27143	<b>TMEM119</b>	Rb	POLY	IgG	WB, IHC, ICC, IF	Hu, Ms	100 ug	<b>395</b>
ABE6427	<b>Trk A</b>	Rb	POLY	IgG	WB;IHC;IF;ELISA	Hu;Ms;Rt	100ug	<b>295</b>
ABE6432	<b>Trk B</b>	Rb	POLY	IgG	WB;IHC;IF;ELISA	Hu;Ms;Rt	100ug	<b>295</b>
ABE3895	<b>Trk C</b>	Rb	POLY	IgG	WB;ELISA	Hu;Rt;Ms;	100ug	<b>295</b>
ABE3861	<b>TRP14</b>	Rb	POLY	IgG	WB;ELISA	Hu;Rt;Ms;	100ug	<b>295</b>
ABE3646	<b>TRP2</b>	Rb	POLY	IgG	WB;IHC;IF;ELISA	Hu;Ms	100ug	<b>295</b>
ABE11963	<b>TRPA1</b>	Rb	POLY	IgG	WB IF;ELISA	Hu;Ms;Rt	100ug	<b>295</b>

Cat.n.	Description	Host	Clone	Isotype	Applications	Species	Size	Price
ABE10257	<b>TRPC1</b>	Rb	POLY	IgG	WB;ELISA	Hu;Rt;Ms	100ug	<b>295</b>
ABE4250	<b>TRPC3</b>	Rb	POLY	IgG	WB;IHC;IF;ELISA	Hu;Ms;Rt	100ug	<b>295</b>
ABE12549	<b>TRPC5</b>	Rb	POLY	IgG	WB	Hu; Ms	100ug	<b>295</b>
ABE12548	<b>TRPC6</b>	Rb	POLY	IgG	WB	Hu; Ms	100ug	<b>295</b>
ABE10258	<b>TRPC7</b>	Rb	POLY	IgG	WB;ELISA	Hu;Ms	100ug	<b>295</b>
ABE12547	<b>TRPM2</b>	Rb	POLY	IgG	WB	Hu; Ms	100ug	<b>295</b>
ABE12546	<b>TRPM3</b>	Rb	POLY	IgG	WB	Hu;Rt;Ms;	100ug	<b>295</b>
ABE12545	<b>TRPM4</b>	Rb	POLY	IgG	WB	Hu; Ms;Rt	100ug	<b>295</b>
ABE10389	<b>TRPM7</b>	Rb	POLY	IgG	WB;ELISA	Hu;Rt;Ms	100ug	<b>295</b>
ABE11946	<b>TRPM8</b>	Rb	POLY	IgG	WB;ELISA	Hu;Ms;Rt	100ug	<b>295</b>
AB8564	<b>TRPV1</b>	Rb	POLY	IgG	WB, IF	Hu, Ms, Rt	100 ug	<b>295</b>
ABE12543	<b>TRPV2</b>	Rb	POLY	IgG	WB; IF;IP	Hu; Ms;Rt	100ug	<b>295</b>
ABE3825	<b>TRPV3</b>	Rb	POLY	IgG	WB;IHC;IF;ELISA	Hu;Ms	100ug	<b>295</b>
ABE3770	<b>TRPV4</b>	Rb	POLY	IgG	WB;ELISA	Hu;Ms;Rt	100ug	<b>295</b>
ABE8551	<b>TRPV4</b>	Rb	POLY	IgG	WB;ELISA	Hu;Ms;Rt	100ug	<b>295</b>
ABE10390	<b>TRPV5</b>	Rb	POLY	IgG	WB;ELISA	Hu;Rt;Ms	100ug	<b>295</b>
ABE10391	<b>TRPV6</b>	Rb	POLY	IgG	WB;ELISA	Hu;Ms;Rt	100ug	<b>295</b>
ABE017	<b>tubulin alpha</b>	Rb	POLY	IgG	WB, IHC	Hu, Rt, Ms	100ug	<b>295</b>
AB-83839	<b>Tubulin beta</b>	Rb	POLY	IgG	WB, IHC	Hu, Rt, Ms	100ug	<b>295</b>
ABS15139	<b>Tubulin beta III (TUJ-1)</b>	Ms	5G8	IgG1	WB, IHC(P), FC, ICC	Hu, Ms, Rt,	100 ug	<b>225</b>
MAB-91908	<b>Tubulin beta III (TUJ-1)</b>	Ms	TUJ-1	IgG1	WB, ICC,IHC (P)	Hu, Ms, Rt,	100 ug	<b>225</b>
ABE049	<b>Tubulin beta III (TUJ-1)</b>	Rb	POLY	IgG	WB, IHC	Hu, Rt, Ms	100ug	<b>295</b>
AB-84368	<b>Tubulin beta III (TUJ-1)</b>	Ch	POLY	IgY	WB, IHC, ICC	Hu, Ms	100ug	<b>350</b>
AB-E16311	<b>Tubulin beta II</b>	Rb	POLY	IgG	WB, IHC	Hu, Rt, Ms	100ug	<b>295</b>
AB-81596	<b>Tubulin betalll (TUJ-1)</b>	Rb	POLY	IgG	WB, IHC	Hu, Rt, Ms	100ug	<b>295</b>
AB-80649	<b>Tyrosine Hydroxylase</b>	Ch	POLY	IgY	WB, IHC(P), IHC(F) ,IF ,ICC	Hu, Rt, Ms	100 ug	<b>380</b>
ABE3600	<b>Tyrosine Hydroxylase</b>	Rb	POLY	IgG	WB;IHC;IF;ELISA	Hu;Ms;Rt	100ug	<b>295</b>
ABE3601	<b>Tyrosine Hydroxylase</b>	Rb	POLY	IgG	WB;IHC;IF;ELISA	Hu;Ms;Rt	100ug	<b>295</b>
ABE3602	<b>Tyrosine Hydroxylase</b>	Rb	POLY	IgG	WB;IHC;IF;ELISA	Rt	100ug	<b>295</b>
MAB-94589	<b>Tyrosine Hydroxylase</b>	Ms	LNC1	IgG1	WB, IHC(P), IHC(F) ,IF ,ICC	Hu, Ms, Rt	100 ug	<b>295</b>
MAB-10263	<b>Tyrosine Hydroxylase</b>	Ms	TH-100	IgG1	WB, IHC(P), IHC(F)	Hu,Rb, Rt,Ms	100 ug	<b>395</b>
ABS11181	<b>Tyrosine Hydroxylase</b>	Rb	POLY	IgG	WB, IHC(P), IHC(F) ,IF ,ICC	Hu, Ms, Rt	100 ul	<b>295</b>
AB-10312	<b>Tyrosine Hydroxylase</b>	Rb	POLY	IgG	WB, IHC(P), IHC(F) ,IF ,ICC	Hu, Ms, Rt	100 ul	<b>295</b>

Cat.n.	Description	Host	Clone	Isotype	Applications	Species	Size	Price
ABE3660	<b>Ubiquitin</b>	Rb	POLY	IgG	WB;IP;IHC;IF;ELISA	Hu;Ms;Rt	100ug	<b>295</b>
ABE1296	<b>Ubiquitin (6G6)</b>	Ms	26A3	IgG	WB, IHC	Hu, Rt, Ms	100 ug	<b>295</b>
ABE365	<b>UCHL1(PGP9.5 )</b>	Rb	POLY	IgG	WB;IHC;IF;ELISA	Hu;Ms;Rt	100ug	<b>295</b>
ABS12159	<b>UCHL1(PGP9.5 )</b>	Ms		IgG1	WB, IF, IHC	Hu Rt Ms	100 ug	<b>295</b>
ABE12371	<b>V-Glut1</b>	Rb	POLY	IgG	WB	Hu; Ms;Rt	100ug	<b>295</b>
ABE11954	<b>V-Glut2</b>	Rb	POLY	IgG	WB;ELISA	Hu;Ms;Rt	100ug	<b>295</b>
ABE8465	<b>Villin</b>	Rb	POLY	IgG	WB;ELISA	Hu;Ms;Rt	100ug	<b>295</b>
AB-83918	<b>Vimentin</b>	Ch	POLY	IgY	WB, IF, ICC, IHC	Hu Rt Ms,Cw, Pg, Ho, Dg, Ch, Mk	100 ug	<b>380</b>
AB-83919	<b>Vimentin</b>	Gt	POLY	IgG	WB, IF, ICC, IHC	Hu Rt Ms, Ho, Dg	100 ug	<b>455</b>
ABE1159	<b>Vimentin</b>	Ms	2A52	IgG1	WB, ICC, IF, IHC	Hu, Rt, Ms	100 ug	<b>275</b>
ABE3698	<b>Vimentin</b>	Rb	POLY	IgG	WB;IHC;IF;ELISA	Hu;Ms;Rt	100ug	<b>295</b>
ABE3700	<b>Vinculin</b>	Rb	POLY	IgG	WB, IHC(P), IF	Hu, Ms, Rt	100 ug	<b>295</b>
ABE043	<b>Vinculin</b>	Rb	POLY	IgG	WB, IHC	Hu, Rt, Ms	100ug	<b>295</b>
ABE9536	<b>VMAT1</b>	Rb	POLY	IgG	WB;ELISA	Hu;Ms;Rt	100ug	<b>295</b>
ABE11255	<b>VMAT2</b>	Rb	POLY	IgG	WB;ELISA	Hu;Rt;Ms	100ug	<b>295</b>
ABE10661	<b>VSX1</b>	Rb	POLY	IgG	WB;ELISA	Hu;Ms	100ug	<b>295</b>
ABE9043	<b>VSX2</b>	Rb	POLY	IgG	WB;ELISA	Hu;Ms	100ug	<b>295</b>