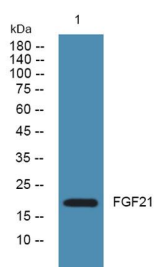


Cat. No:	AB-E7589
Conjugate:	Unconjugated
Size:	100 ug
Clone:	POLY
Concentration:	1mg/ml
Host:	Rabbit
Isotype:	IgG
Immunogen:	Synthesized peptide derived from human protein . at AA range: 90-170.
Reactivity:	Human, Mouse, Rat
Applications:	Western Blot: 1:500-2000
Molecular Weight:	22kD
Purification:	The antibody was affinity-purified from rabbit antiserum by affinity-chromatography using epitope-specific immunogen.
Background:	This gene encodes a member of the fibroblast growth factor (FGF) family. FGF family members possess broad mitogenic and cell survival activities and are involved in a variety of biological processes. This protein is a secreted endocrine factor that functions as a major metabolic regulator. The encoded protein stimulates the uptake of glucose in adipose tissue.
Form:	Liquid
Buffer:	Liquid in PBS containing 50% glycerol, 0.5% BSA and 0.02% sodium azide.
Storage:	Store at -20°C. Avoid repeated freeze-thaw cycles.



Western blot analysis of lysates from KB cells, primary antibody was diluted at 1:1000, 4° over night

**For Research use only
IMMUNOLOGICAL SCIENCES**