

AB-84403 Villin1 Rabbit Polyclonal Antibody

Size:	100 ug
Concentration:	1mg/ml
Source:	Rabbit
Isotype:	IgG
Purification:	Affinity purification
Form:	liquid
Cross-Reactivity:	Human, Mouse

Background: This gene encodes a member of a family of calcium-regulated actin-binding proteins. This protein represents a dominant part of the brush border cytoskeleton which functions in the capping, severing, and bundling of actin filaments. Two mRNAs of 2.7 kb and 3.5 kb have been observed; they result from utilization of alternate polyadenylation signals present in the terminal exon.

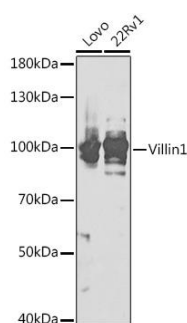
Immunogen: Recombinant fusion protein containing a sequence corresponding to amino acids 1-350 of human Villin1.

Synonyms: VIL1;D2S1471;VIL;villin-1

Observed MW 93kDa

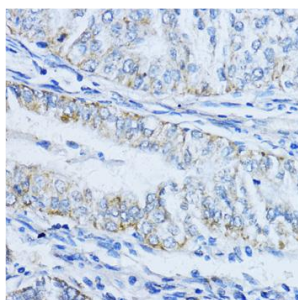
Applications: **Western Blot:** 1:500 - 1:2000
Immunohistochemistry: 1:50 - 1:200

Storage: Store at -20°C. Avoid freeze / thaw cycles.
Buffer: PBS with 0.02% sodium azide,50% glycerol,pH7.3.

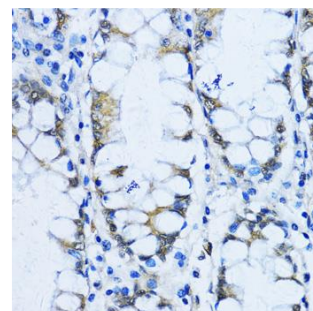


Western blot analysis of extracts of various cell lines, using Villin1 antibody at 1:1000 dilution.

Secondary antibody: HRP Goat Anti-Rabbit IgG (H+L) at 1:10000 dilution.
Lysates/proteins: 25ug per lane.
Blocking buffer: 3% nonfat dry milk in TBST.
Detection: ECL West Pico Plus.



Immunohistochemistry of paraffin embedded human colon carcinoma using Villin1 antibody at dilution of 1:100 (40x lens).



Immunohistochemistry of paraffin embedded human stomach using Villin1 antibody at dilution of 1:100 (40x lens).