

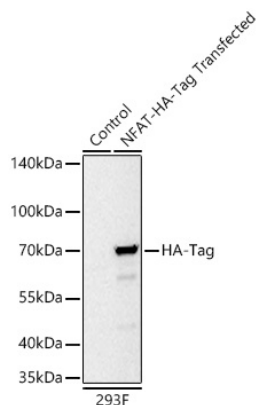


Product name:	HA-Tag Rabbit mAb
Cat number:	ABE105
Conjugate:	Unconjugated
Host:	Rabbit
Size:	100 ug
Clone:	ARC59578
Concentration:	1mg/ml
Isotype:	IgG1,Kappa
Immunogen:	A synthetic peptide corresponding to HA tag.
Reactivity:	Species independent
Applications:	WB,1:10000 - 1:60000 IF/ICC,1:50 - 1:200 IP,0.5µg-4µg antibody for 200µg-400µg extracts of whole cells ELISA,Recommended starting concentration is 1 µg/mL. Please optimize the concentration based on your specific assay requirements.
Molecular weight:	65kDa/40kDa
Purification:	Affinity purification
Background:	Protein tags are peptide sequences genetically grafted onto a recombinant protein. Often these tags are removable by chemical agents or by enzymatic means, such as proteolysis or intein splicing. Tags are attached to proteins for various purposes.Epitope tags are short peptide sequences which are chosen because high-affinity antibodies can be reliably produced in many different species. These are usually derived from viral genes, which explain their high immunoreactivity. Epitope tags include V5-tag, Myc-tag, HA-tag and NE-tag. These tags are particularly useful for western blotting, immunofluorescence and immunoprecipitation experiments, although they also find use in antibody purification.
Form:	liquid
Buffer:	PBS with 0.05% proclin300,0.05% BSA,50% glycerol,pH7.3.
Storage:	Store at -20°C. Avoid freeze / thaw cycles.

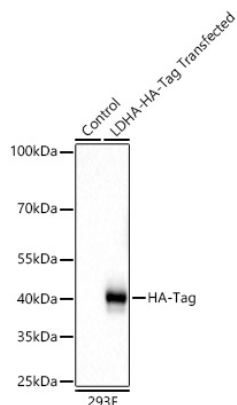
For Research Use Only

IMMUNOLOGICAL SCIENCES

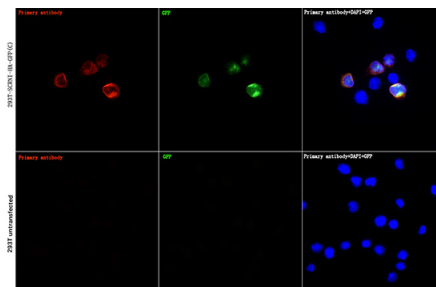
Web-site: <https://immunologicalsciences.com> - E-mail: info@immunologicalsciences.com



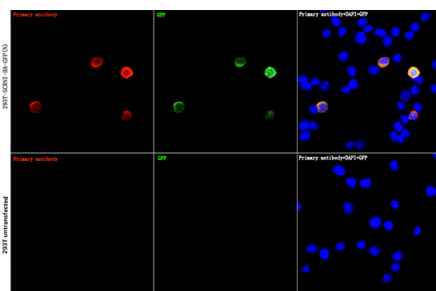
Western blot analysis of lysates from wild type (WT) and 293F cells transfected with NFAT-HA-Tag using HA-Tag Rabbit mAb at 1:10000 dilution incubated overnight at 4°C. Secondary antibody: HRP-conjugated Goat anti-Rabbit IgG (H+L) at 1:10000 dilution. Lysates/proteins: 20 µg per lane. Blocking buffer: 3% nonfat dry milk in TBST. Detection: ECL West Pico Plus. .Exposure time: 10s.



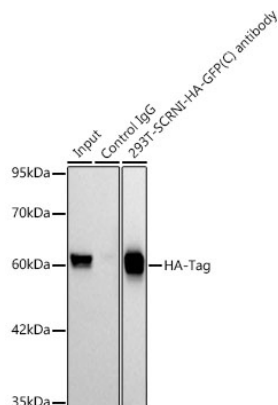
Western blot analysis of lysates from wild type (WT) and 293F cells transfected with LDHA-HA-Tag using HA-Tag Rabbit mAb at 1:40000 dilution incubated overnight at 4°C. Secondary antibody: HRP-conjugated Goat anti-Rabbit IgG (H+L) at 1:10000 dilution. Lysates/proteins: 20 µg per lane. Blocking buffer: 3% nonfat dry milk in TBST. Detection: ECL West Pico Plus. .Exposure time: 10s.



Immunofluorescence analysis of 293T-SCRNI-HA-GFP(C) and 293T cells using HA-Tag Rabbit mAb at dilution of 1:100 (40x lens). Secondary antibody: Cy3-conjugated Goat anti-Rabbit IgG (H+L) at 1:500 dilution. Blue: DAPI for nuclear staining.



Immunofluorescence analysis of 293T-SCRNI-HA-GFP(N) and 293T cells using HA-Tag Rabbit mAb at dilution of 1:100 (40x lens). Secondary antibody: Cy3-conjugated Goat anti-Rabbit IgG (H+L) at 1:500 dilution. Blue: DAPI for nuclear staining.



Immunoprecipitation analysis of 300 µg extracts of 293T-SCRNI-HA-GFP-N cells using 3 µg HA-Tag Rabbit mAb. Western blot was performed from the immunoprecipitate using HA-Tag Rabbit mAb at a dilution of 1:6000.

For Research Use Only

IMMUNOLOGICAL SCIENCES

Web-site: <https://immunologicalsciences.com> - E-mail: info@immunologicalsciences.com