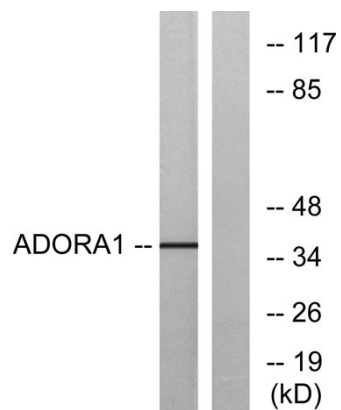


Product name:	Adenosine A1-R rabbit pAb
Cat number:	ABE4771
Conjugate:	unconjugated
Host:	Rabbit
Size:	100 ug
Clone:	Polyclonal
Concentration:	1mg/ml
Isotype:	IgG
Immunogen:	The antiserum was produced against synthesized peptide derived from human ADORA1. AA range:277-326
Reactivity:	Human;Rat
Applications:	Western Blot: 1/500 - 1/2000. Immunofluorescence: 1/200 - 1/1000. ELISA: 1/20000. Not yet tested in other applications.
Molecular weight:	37kD
Background:	The protein encoded by this gene is an adenosine receptor that belongs to the G-protein coupled receptor 1 family. There are 3 types of adenosine receptors, each with a specific pattern of ligand binding and tissue distribution, and together they regulate a diverse set of physiologic functions. The type A1 receptors inhibit adenylyl cyclase, and play a role in the fertilization process. Animal studies also suggest a role for A1 receptors in kidney function and ethanol intoxication. Transcript variants with alternative splicing in the 5' UTR have been found for this gene. [provided by RefSeq, Jul 2008],
Form:	liquid
Storage:	-20°C/1 year

For Research Use Only

IMMUNOLOGICAL SCIENCES

Web-site: <https://immunologicalsciences.com> - E-mail: info@immunologicalsciences.com



Western blot analysis of lysates from MCF-7 cells, using ADORA1 Antibody. The lane on the right is blocked with the synthesized peptide.

For Research Use Only

IMMUNOLOGICAL SCIENCES

Web-site: <https://immunologicalsciences.com> - E-mail: info@immunologicalsciences.com