

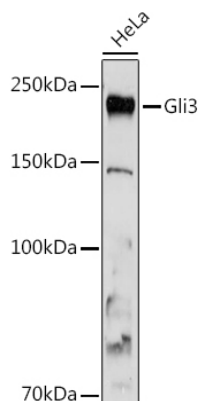


<b>Product name:</b>	Gli3 Rabbit mAb
<b>Cat number:</b>	AB3300
<b>Conjugate:</b>	Unconjugated
<b>Host:</b>	Rabbit
<b>Size:</b>	100 ug
<b>Clone:</b>	ARC1941
<b>Concentration:</b>	1mg/ml
<b>Isotype:</b>	IgG
<b>Immunogen:</b>	Recombinant fusion protein containing a sequence corresponding to amino acids 1301-1580 of human Gli3 (P10071).
<b>Reactivity:</b>	Human,Mouse,Rat
<b>Applications:</b>	WB,1:500 - 1:1000 IF/ICC,1:50 - 1:200
<b>Molecular weight:</b>	190kDa
<b>Purification:</b>	Affinity purification
<b>Background:</b>	This gene encodes a protein which belongs to the C2H2-type zinc finger proteins subclass of the Gli family. They are characterized as DNA-binding transcription factors and are mediators of Sonic hedgehog (Shh) signaling. The protein encoded by this gene localizes in the cytoplasm and activates patched Drosophila homolog (PTCH) gene expression. It is also thought to play a role during embryogenesis. Mutations in this gene have been associated with several diseases, including Greig cephalopolysyndactyly syndrome, Pallister-Hall syndrome, preaxial polydactyly type IV, and postaxial polydactyly types A1 and B.
<b>Form:</b>	liquid
<b>Buffer:</b>	PBS with 0.02% sodium azide,0.05% BSA,50% glycerol,pH7.3.
<b>Storage:</b>	Store at -20°C. Avoid freeze / thaw cycles.

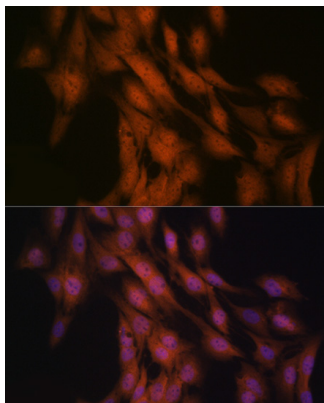
**For Research Use Only**

**IMMUNOLOGICAL SCIENCES**

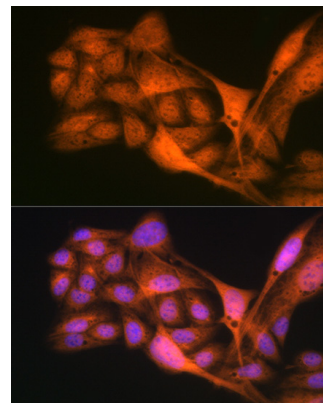
Web-site: <https://immunologicalsciences.com> - E-mail: [info@immunologicalsciences.com](mailto:info@immunologicalsciences.com)



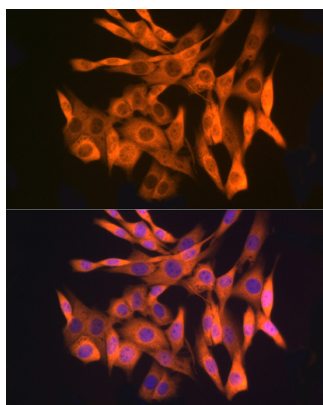
Western blot analysis of extracts of HeLa cells, using Gli3 antibody at 1:1000 dilution. Secondary antibody: HRP Goat Anti-Rabbit IgG (H+L) at 1:10000 dilution. Lysates/proteins: 25µg per lane. Blocking buffer: 3% nonfat dry milk in TBST. Detection: ECL West Pico Plus. Exposure time: 180s.



Immunofluorescence analysis of C6 cells using Gli3 Rabbit mAb at dilution of 1:100 (40x lens). Blue: DAPI for nuclear staining.



Immunofluorescence analysis of U-2 OS cells using Gli3 Rabbit mAb at dilution of 1:100 (40x lens). Blue: DAPI for nuclear staining.



Immunofluorescence analysis of NIH/3T3 cells using Gli3 Rabbit mAb at dilution of 1:100 (40x lens). Blue: DAPI for nuclear staining.

**For Research Use Only**  
**IMMUNOLOGICAL SCIENCES**