

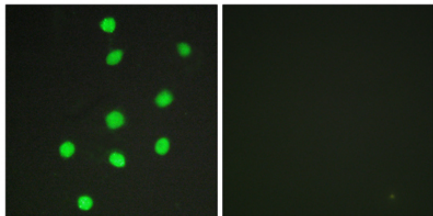


Product name:	GLI-3 rabbit pAb
Cat number:	ABE5561
Conjugate:	unconjugated
Host:	Rabbit
Size:	100 ug
Synonyms:	GLI3; Transcriptional activator GLI3; GLI3 formof 190 kDa; GLI3-190; GLI3 full length protein; GLI3FL
Clone:	Polyclonal
Concentration:	1mg/ml
Isotype:	IgG
Immunogen:	The antiserum was produced against synthesized peptide derived from human GLI-3. AA range:11-60
Reactivity:	Human;Mouse;Rat
Applications:	Immunohistochemistry: 1/100 - 1/300. Immunofluorescence: 1/200 - 1/1000. ELISA: 1/10000. Not yet tested in other applications.
Molecular weight:	14kDa
Purification:	The antibody was affinity-purified from rabbit antiserum by affinity-chromatography using epitope-specific immunogen.
Background:	This gene encodes a protein which belongs to the C2H2-type zinc finger proteins subclass of the Gli family. They are characterized as DNA-binding transcription factors and are mediators of Sonic hedgehog (Shh) signaling. The protein encoded by this gene localizes in the cytoplasm and activates patched Drosophila homolog (PTCH) gene expression. It is also thought to play a role during embryogenesis. Mutations in this gene have been associated with several diseases, including Greig cephalopolysyndactyly syndrome, Pallister-Hall syndrome, preaxial polydactyly type IV, and postaxial polydactyly types A1 and B. [provided by RefSeq, Jul 2008],
Form:	liquid
Buffer:	Liquid in PBS containing 50% glycerol, 0.5%BSAand0.02% sodium azide
Storage:	Store at -20°C. Avoid repeated freeze-thaw cycles.

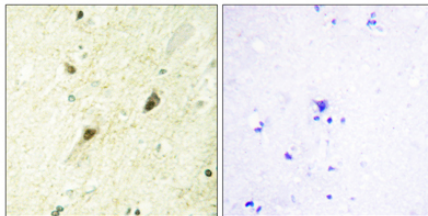
For Research Use Only

IMMUNOLOGICAL SCIENCES

Web-site: <https://immunologicalsciences.com> - E-mail: info@immunologicalsciences.com



Immunofluorescence analysis of HepG2 cells, using GLI-3 Antibody. The picture on the right is blocked with the synthesized peptide.



Immunohistochemistry analysis of paraffin-embedded human brain tissue, using GLI-3 Antibody. The picture on the right is blocked with the synthesized peptide.

For Research Use Only

IMMUNOLOGICAL SCIENCES

Web-site: <https://immunologicalsciences.com> - E-mail: info@immunologicalsciences.com