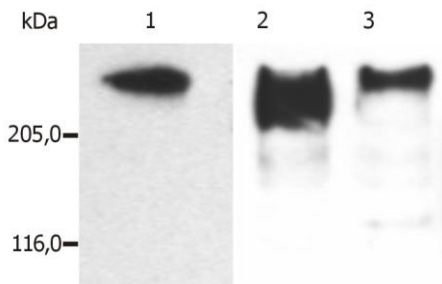


MAB-10334      **Monoclonal Antibody to MAP2ab**

<b>Clone:</b>	MT-01
<b>Size:</b>	100 µg
<b>Isotype:</b>	Mouse IgG1
<b>Specificity:</b>	The antibody MT-01 reacts with molecule Microtubule Associated Protein 2ab (MAP2ab).
<b>Background:</b>	<b>MAP2a</b> and <b>2b</b> (270 kDa) being found mostly in dendrites, stabilize microtubules (shift the reaction kinetics in addition of new subunits and microtubule growth) and participate in determining the structure of different parts of vertebrate nerve cells.
<b>Immunogen:</b>	Termostabile fraction of bovine brain microtubules (whole MAP2ab molecule).
<b>Species Reactivity:</b>	Human, Porcine, Mouse, Bovine, Feline (Cat), Other not tested
<b>Application:</b>	<b>Immunoprecipitation</b> <b>Western Blotting</b> <b>Immunocytochemistry</b>
<b>Purity:</b>	> 95% (by SDS-PAGE)
<b>Purification:</b>	Purified from ascites by protein-A affinity chromatography.
<b>Concentration:</b>	1 mg/ml
<b>Storage Buffer:</b>	Phosphate buffered saline (PBS) with 15 mM sodium azide, approx. pH 7.4
<b>Storage / Stability:</b>	Store at 2-8°C. For long-term storage aliquot and store at -20°C. Avoid freeze/thaw cycles.



**Fig. 1.** Western Blotting analysis (reducing conditions) of microtubules partially purified from porcine brain lysate.  
*Lane 1:* immunostaining with anti-MAP2ab (**MT-01**)  
*Lane 2:* immunostaining with anti-MAP2ab (**MT-07**);  
*Lane 3:* immunostaining with anti-MAP2ab (**MT-08**)

**For Research use only; not for use as a diagnostic**

**IMMUNOLOGICAL SCIENCES**

Web-site: [www.immunologicalsciences.com](http://www.immunologicalsciences.com); e-mail: [info@immunologicalsciences.com](mailto:info@immunologicalsciences.com)