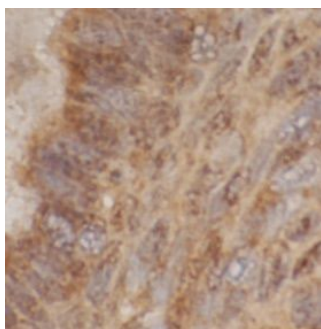


GLI3 Rabbit Polyclonal Antibody

| | |
|-----------------------|--|
| Cat. No: | AB-82824 |
| Conjugate: | Unconjugated |
| Size: | 100 ug |
| Clone: | POLY |
| Concentration: | 1mg/ml |
| Host: | Rabbit |
| Isotype: | IgG |
| Immunogen: | GLI family zinc finger 3 |
| Reactivity: | Human |
| Applications: | Immunohistochemistry: 1:50 - 1:500 |
| Purification: | Immunogen affinity purified |
| Synonyms: | Transcriptional activator GLI3 GLI3 form of 190 kDa (GLI3-190) GLI3full-length protein (GLI3FL) Transcriptional repressor GLI3RA Alternative names: GLI3 C-terminally truncated form GLI3 form of 83kDa (GLI3-83) GLI3 |
| Form: | Liquid |
| Buffer: | PBS with 0.02% sodium azide and 50% glycerol pH7.3. |
| Storage: | Store at -20°C for 12 months (Avoid repeated freeze / thaw cycles.) |



Immunohistochemistry of paraffin-embedded human liver cancer tissue slide using (GLI3 Antibody) at dilution of 1:200