

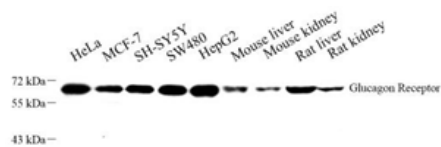


<b>Product name:</b>	Anti-Glucagon Receptor Rabbit pAb
<b>Cat number:</b>	ABS112077
<b>Conjugate:</b>	unconjugated
<b>Host:</b>	Rabbit
<b>Size:</b>	100 µL
<b>Concentration:</b>	1mg/ml
<b>Isotype:</b>	IgG
<b>Immunogen:</b>	Recombinant protein corresponding to Mouse Glucagon Receptor
<b>Reactivity:</b>	Human, Mouse, Rat
<b>Applications:</b>	WB 1: 500-1: 1000
<b>Molecular Weight:</b>	62 kDa
<b>Purification:</b>	Affinity purification
<b>Background:</b>	The physiologic effects of glucagon are mediated through the glucagon receptor, a member of the superfamily of receptors characterized by a 7-transmembrane domain structure and by their coupling via GTP-binding proteins (G proteins) to adenylyl cyclase. The glucagon receptor has been reported to be expressed in liver and adipose, but not in adrenal medulla. ESTs have been isolated from liver/spleen and kidney libraries.
<b>Form:</b>	Liquid
<b>Buffer:</b>	PBS with 0.02% sodium azide, 100 µg/ml BSA and 50% glycerol.
<b>Storage:</b>	Store at -20 °C for one year. Avoid repeated freeze/thaw cycles.
<b>Subcategory name:</b>	Primary Antibodies

**For Research Use Only**

**IMMUNOLOGICAL SCIENCES**

Web-site: <https://immunologicalsciences.com> - E-mail: [info@immunologicalsciences.com](mailto:info@immunologicalsciences.com)



Western blot analysis of Glucagon  
Receptor at dilution of 1: 500

**For Research Use Only**

**IMMUNOLOGICAL SCIENCES**

Web-site: <https://immunologicalsciences.com> - E-mail: [info@immunologicalsciences.com](mailto:info@immunologicalsciences.com)