

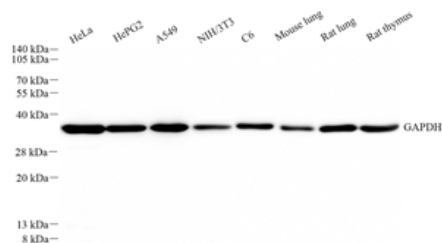


Product name:	GAPDH Rabbit Polyclonal Antibody
Cat number:	ABS15004
Conjugate:	unconjugated
Host:	Rabbit
Size:	100 µL
Synonyms:	GAPDH, GAPD, G3PD, HEL-S-162eP, glyceraldehyde-3-phosphate dehydrogenase
Concentration:	1mg/ml
Isotype:	IgG
Immunogen:	KLH conjugated Synthetic peptide corresponding to Mouse GAPDH
Reactivity:	Human, Mouse, Rat
Applications:	WB 1: 3000-1: 5000 IHC/IF 1: 500-1: 2000 ICC/IF 1: 500-1: 1000
Molecular Weight:	36 kDa / 36 kDa
Purification:	Affinity purification
Background:	Glyceraldehyde 3-phosphate dehydrogenase (abbreviated as GAPDH or less commonly as G3PDH) is an enzyme of ~37kDa that catalyzes the sixth step of glycolysis and thus serves to break down glucose for energy and carbon molecules. In addition to this long established metabolic function, GAPDH has recently been implicated in several non-metabolic processes, including transcription activation, initiation of apoptosis, ER to Golgi vesicle shuttling, and fast axonal, or axoplasmic transport. In sperm, a testis-specific isoenzyme GAPDHS is expressed.
Form:	Liquid
Buffer:	PBS with 0.02% sodium azide, 100 µg/ml BSA and 50% glycerol.
Storage:	Store at -20 °C for one year. Avoid repeated freeze/thaw cycles.

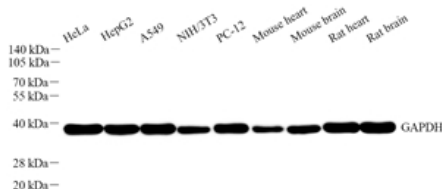
For Research Use Only

IMMUNOLOGICAL SCIENCES

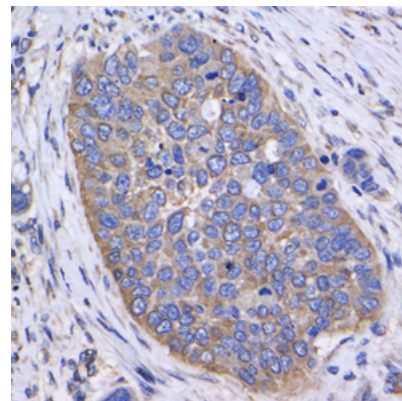
Web-site: <https://immunologicalsciences.com> - E-mail: info@immunologicalsciences.com



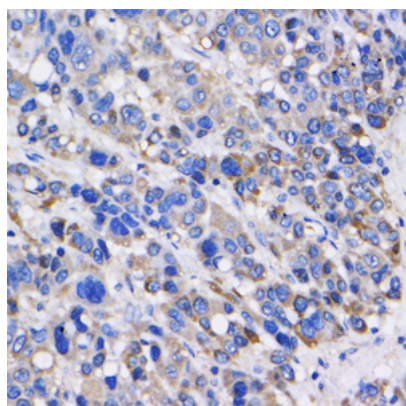
WB analysis of GAPDH. Sample: Protein treated by RIPA Lysis Buffer . Blocking buffer: 3% Nonfat dry milk in TBST, RT, 1h. Primary antibody: 1: 5000, 4°C overnight. Secondary antibody: HRP conjugated Goat Anti-Rabbit IgG , 1: 5000, RT, 1h.



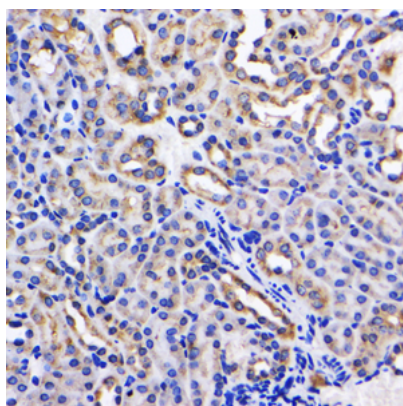
WB analysis of GAPDH. Sample: Protein treated by RIPA Lysis Buffer . Blocking buffer: 3% Nonfat dry milk in TBST, RT, 1h. Primary antibody: 1: 3000, 4°C overnight. Secondary antibody: HRP conjugated Goat Anti-Rabbit IgG , 1: 3000, RT, 1h.



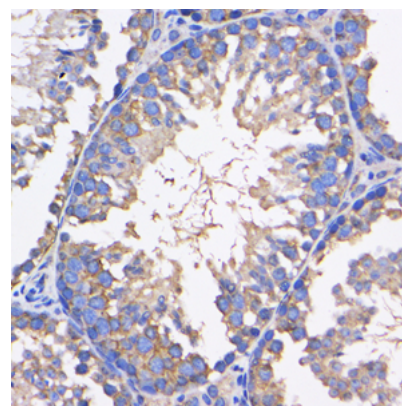
IHC analysis of GAPDH. Sample: Human esophageal cancer, 4% PFA 12-24h. Antigen retrieval: Citrate buffer , pressure cooker 2 min. Primary antibody: 1: 1000, 4°C overnight. Secondary antibody: HRP conjugated Goat Anti-Rabbit IgG , 1: 200, RT, 1h.



IHC analysis of GAPDH. Sample: Human liver cancer, 4% PFA 12-24h. Antigen retrieval: Citrate buffer , pressure cooker 2 min. Primary antibody: 1: 1000, 4°C overnight. Secondary antibody: HRP conjugated Goat Anti-Rabbit IgG , 1: 200, RT, 1h.



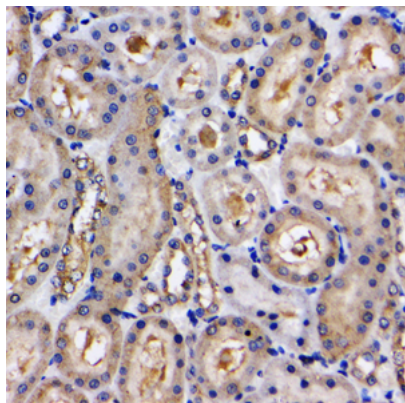
IHC analysis of GAPDH. Sample: Mouse kidney, 4% PFA 12-24h. Antigen retrieval: Citrate buffer , pressure cooker 2 min. Primary antibody: 1: 500, 4°C overnight. Secondary antibody: HRP conjugated Goat Anti-Rabbit IgG , 1: 200, RT, 1h.



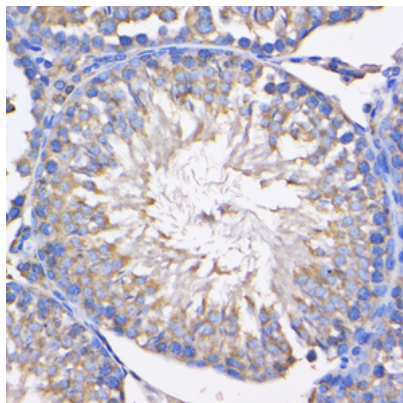
IHC analysis of GAPDH. Sample: Mouse testis, 4% PFA 12-24h. Antigen retrieval: Citrate buffer , pressure cooker 2 min. Primary antibody: 1: 500, 4°C overnight. Secondary antibody: HRP conjugated Goat Anti-Rabbit IgG , 1: 200, RT, 1h.

For Research Use Only
IMMUNOLOGICAL SCIENCES

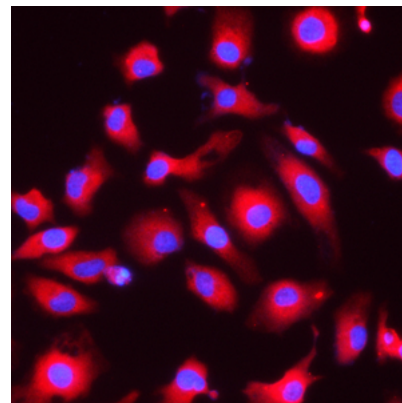
Web-site: <https://immunologicalsciences.com> - E-mail: info@immunologicalsciences.com



IHC analysis of GAPDH. Sample: Rat kidney, 4% PFA 12-24h. Antigen retrieval: Citrate buffer, pressure cooker 2 min. Primary antibody: 1: 1000, 4°C overnight. Secondary antibody: HRP conjugated Goat Anti-Rabbit IgG, 1: 200, RT, 1h.



IHC analysis of GAPDH. Sample: Rat testis, 4% PFA 12-24h. Antigen retrieval: Citrate buffer, pressure cooker 2 min. Primary antibody: 1: 1000, 4°C overnight. Secondary antibody: HRP conjugated Goat Anti-Rabbit IgG, 1: 200, RT, 1h.



ICC analysis of GAPDH red. Sample: HeLa, 4% PFA 20min. Blocking buffer: 3% BSA in PBS, RT, 30min. Primary antibody: 1: 500, 4°C overnight. Secondary antibody: Cy3 conjugated Goat Anti-Rabbit IgG, 1: 300, RT, 1h.

**For Research Use Only
IMMUNOLOGICAL SCIENCES**

Web-site: <https://immunologicalsciences.com> - E-mail: info@immunologicalsciences.com