

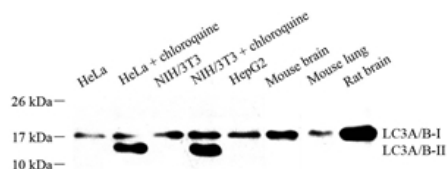


<b>Product name:</b>	Anti-LC3A/B Rabbit pAb
<b>Cat number:</b>	ABS11124
<b>Conjugate:</b>	unconjugated
<b>Host:</b>	Rabbit
<b>Size:</b>	100 µL
<b>Synonyms:</b>	LC3, LC3A, LC3A/B, LC3B, MAP1A/MAP1B LC3 A, MAP1A/MAP1B light chain 3 A, MAP1ALC3, MAP1BLC3, MAP1LC3A, MAP1LC3A/B, MAP1LC3B
<b>Concentration:</b>	1mg/ml
<b>Isotype:</b>	IgG
<b>Immunogen:</b>	KLH conjugated Synthetic peptide corresponding to Mouse LC3B
<b>Reactivity:</b>	Human, Mouse, Rat
<b>Applications:</b>	WB 1: 1000-1: 2000 ICC/IF 1: 300-1: 600
<b>Molecular Weight:</b>	14/16 kDa / 14/16 kDa
<b>Purification:</b>	Affinity purification
<b>Background:</b>	LC3, also known as microtubule-associated protein 1 light chain 3 (MAP1LC3), is a mammalian homolog of the yeast Atg8p (autophagy-related 8 protein) that is involved in autophagy process. Three isoforms of LC3 exist as LC3A, LC3B, and LC3C. LC3 is first synthesized as pro-LC3, and undergoes C-terminal cleavage to yield a cytosolic precursor known as LC3-I. During autophagy LC3-I is subsequently conjugated to PE lipid as lipidated form: LC3-II. The lipidated form migrates faster on SDS-PAGE gel. The increased the level of LC3-II has been widely used as autophagy marker. This antibody recognizes both LC3-I and LC3-II.
<b>Form:</b>	Liquid
<b>Buffer:</b>	PBS with 0.02% sodium azide, 100 µg/ml BSA and 50% glycerol.
<b>Storage:</b>	Store at -20 °C for one year. Avoid repeated freeze/ thaw cycles.

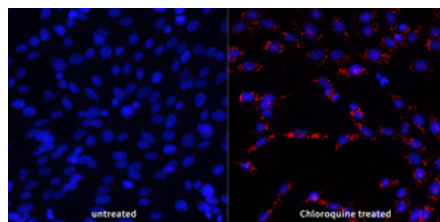
**For Research Use Only**

**IMMUNOLOGICAL SCIENCES**

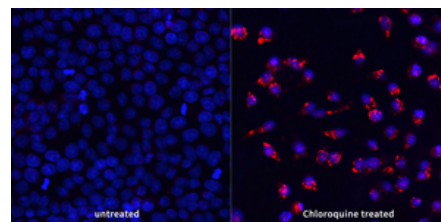
Web-site: <https://immunologicalsciences.com> - E-mail: [info@immunologicalsciences.com](mailto:info@immunologicalsciences.com)



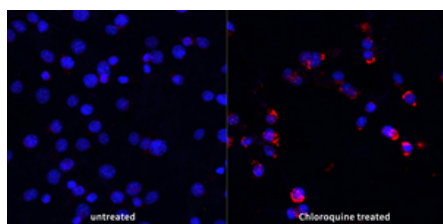
WB analysis of LC3A/B. Sample:  
Protein treated by RIPA Lysis Buffer .  
Blocking buffer: 3% Nonfat dry milk in  
TBST, RT, 1h. Primary antibody: 1:  
1000, 4°C overnight. Secondary  
antibody: HRP conjugated Goat  
Anti-Rabbit IgG , 1: 200, RT, 1h.



ICC analysis of LC3A/Bred. Sample:  
C6, methanol 10min. Blocking buffer:  
3% BSA in PBS, RT, 30min. Primary  
antibody: 1: 500, 4°C overnight.  
Secondary antibody: Cy3 conjugated  
Goat Anti-Rabbit IgG , 1: 300, RT, 1h.



ICC analysis of LC3A/Bred. Sample:  
HeLa, methanol 10min. Blocking buffer:  
3% BSA in PBS, RT, 30min. Primary  
antibody: 1: 500, 4°C overnight.  
Secondary antibody: Cy3 conjugated  
Goat Anti-Rabbit IgG , 1: 300, RT, 1h.



ICC analysis of LC3A/Bred. Sample:  
NIT3T3, methanol 10min. Blocking  
buffer: 3% BSA in PBS, RT, 30min.  
Primary antibody: 1: 500, 4°C overnight.  
Secondary antibody: Cy3 conjugated  
Goat Anti-Rabbit IgG , 1: 300, RT, 1h.

**For Research Use Only  
IMMUNOLOGICAL SCIENCES**

Web-site: <https://immunologicalsciences.com> - E-mail: [info@immunologicalsciences.com](mailto:info@immunologicalsciences.com)