

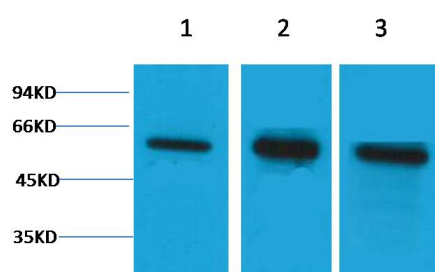


Product name:	β Tubulin Rabbit pAb
Cat number:	ABE058
Conjugate:	unconjugated
Host:	Rabbit
Size:	100 ug
Synonyms:	Beta 4 tubulin, TBB5, TUBB2, TUBB2A, tubulin beta 2A, beta tubulin, tubulin beta chain
Clone:	Polyclonal
Concentration:	1mg/mL
Isotype:	IgG
Immunogen:	Recombinant Protein
Reactivity:	Human, Rat, Mouse
Applications:	Western Blot 1:2,000-5,000 Immunohistochemistry: 1:500-1,000
Molecular Weight:	55kDa
Background:	Microtubules are constituent parts of the mitotic apparatus, cilia, flagella, and elements of the cytoskeleton. They consist principally of 2 soluble proteins, alpha- and beta-tubulin, each of about 55,000 Da. Antibodies against beta Tubulin are useful as loading controls for Western Blotting. However it should be noted that levels of β-Tubulin may not be stable in certain cells. For example, expression of β-Tubulin in adipose tissue is very low and therefore β-Tubulin should not be used as loading control for these tissues.
Form:	liquid
Buffer:	PBS with 0.02% sodium azide and 50% glycerol pH 7.4.
Storage:	Store at -20°C. Avoid repeated freeze-thaw cycles.

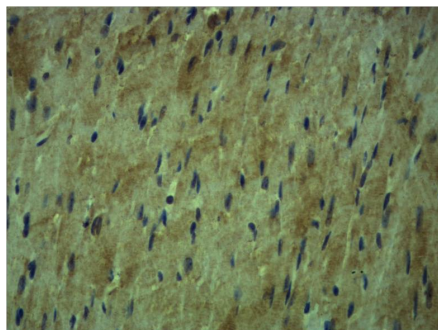
For Research Use Only

IMMUNOLOGICAL SCIENCES

Web-site: <https://immunologicalsciences.com> - E-mail: info@immunologicalsciences.com



Western blot analysis of 1) Hela,
2) Mouse Brain, 3) Rat Brain tissue with
diluted at 1:5,000.



Immunohistochemical analysis of
paraffin-embedded Mouse Heart Tissue
using β -tubulin Rabbit pAb diluted at
1:500.

For Research Use Only

IMMUNOLOGICAL SCIENCES

Web-site: <https://immunologicalsciences.com> - E-mail: info@immunologicalsciences.com