

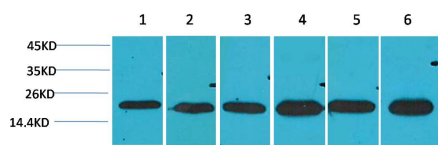


Product name:	SOD2 Rabbit Polyclonal Antibody
Cat number:	ABE211
Conjugate:	unconjugated
Host:	Rabbit
Size:	100 ug
Synonyms:	IPO B antibody, Manganese SOD antibody, Superoxide dismutase mitochondrial antibody
Clone:	Polyclonal
Concentration:	1mg/mL
Isotype:	IgG
Immunogen:	Recombinant Protein
Reactivity:	Human, Rat, Mouse
Applications:	WB 1:1,000-2,000 IHC 1:200-500
Molecular Weight:	22kDa
Background:	Superoxide dismutase 2, mitochondrial, also known as SOD2, is an enzyme which in humans is encoded by the SOD2 gene. This gene is a member of the iron/manganese superoxide dismutase family. It encodes a mitochondrial matrix protein that forms a homotetramer and binds one manganese ion per subunit.
Form:	liquid
Buffer:	PBS with 0.02% sodium azide and 50% glycerol pH 7.4.
Storage:	Store at -20°C. Avoid repeated freeze-thaw cycles.

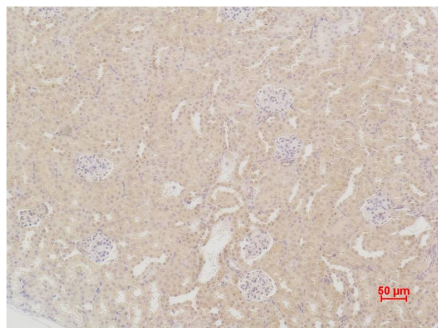
For Research Use Only

IMMUNOLOGICAL SCIENCES

Web-site: <https://immunologicalsciences.com> - E-mail: info@immunologicalsciences.com



Western blot analysis of 1) Hela,
2) HepG2, 3) C2C12, 4) Mouse Liver
Tissue, 5) Rat Brain Tissue, 6) Rat Liver
Tissue with SOD2 Rabbit pAb diluted at
1:2,000.



Immunohistochemical analysis of
paraffin-embedded Mouse Kidney
Tissue using SOD2 Rabbit pAb diluted
at 1:200.

For Research Use Only

IMMUNOLOGICAL SCIENCES

Web-site: <https://immunologicalsciences.com> - E-mail: info@immunologicalsciences.com