

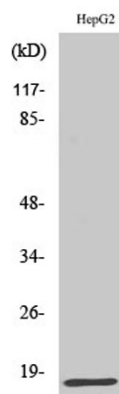


<b>Product name:</b>	IFN- $\gamma$ Rabbit Polyclonal Antibody
<b>Cat number:</b>	ABE2593
<b>Conjugate:</b>	unconjugated
<b>Host:</b>	Rabbit
<b>Size:</b>	100 ug
<b>Synonyms:</b>	IFNG; Interferon gamma; IFN-gamma; Immune interferon
<b>Clone:</b>	Polyclonal
<b>Concentration:</b>	1 mg/ml
<b>Isotype:</b>	IgG
<b>Immunogen:</b>	The antiserum was produced against synthesized peptide derived from human IFN-gamma. AA range:20-69
<b>Reactivity:</b>	Human;Rat;Mouse;
<b>Applications:</b>	Western Blot: 1/500 - 1/2000. Immunohistochemistry: 1/100 - 1/300. ELISA: 1/40000. Not yet tested in other applications.
<b>Molecular Weight:</b>	17kD
<b>Purification:</b>	The antibody was affinity-purified from rabbit antiserum by affinity-chromatography using epitope-specific immunogen.
<b>Background:</b>	This gene encodes a soluble cytokine that is a member of the type II interferon class. The encoded protein is secreted by cells of both the innate and adaptive immune systems. The active protein is a homodimer that binds to the interferon gamma receptor which triggers a cellular response to viral and microbial infections. Mutations in this gene are associated with an increased susceptibility to viral, bacterial and parasitic infections and to several autoimmune diseases. [provided by RefSeq, Dec 2015],
<b>Form:</b>	liquid
<b>Buffer:</b>	Liquid in PBS containing 50% glycerol, 0.5%BSAand0.02% sodium azide
<b>Storage:</b>	-20°C/1 year

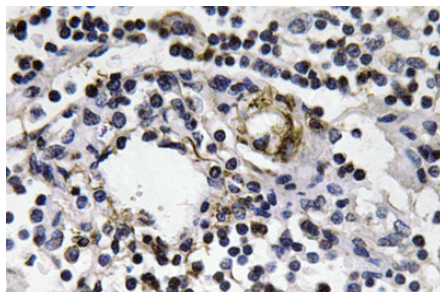
**For Research Use Only**

**IMMUNOLOGICAL SCIENCES**

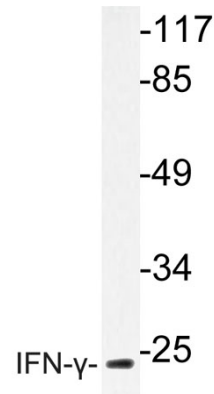
Web-site: <https://immunologicalsciences.com> - E-mail: [info@immunologicalsciences.com](mailto:info@immunologicalsciences.com)



Western Blot analysis of various cells using IFN- $\gamma$  Polyclonal Antibody diluted at 1:1000



Immunohistochemistry analysis of IFN- $\gamma$  antibody in paraffin-embedded human lymph node tissue.



Western blot analysis of lysate from HepG2 cells, using IFN- $\gamma$  antibody.

**For Research Use Only**  
**IMMUNOLOGICAL SCIENCES**