

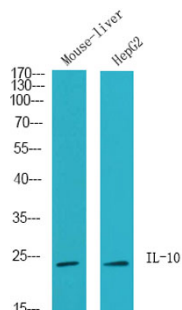


Product name:	IL-10 rabbit Polyclonal Antibody
Cat number:	ABE3868
Conjugate:	unconjugated
Host:	Rabbit
Size:	100 ug
Synonyms:	IL10; Interleukin-10; IL-10; Cytokine synthesis inhibitory factor; CSIF
Clone:	Polyclonal
Concentration:	1 mg/ml
Isotype:	IgG
Immunogen:	The antiserum was produced against synthesized peptide derived from the Internal region of human IL10. AA range:71-120
Reactivity:	Human;Mouse;Rat
Applications:	Western Blot: 1/500 - 1/2000. IHC-p: 1:100-300 ELISA: 1/20000. IF 1:100-300
Molecular Weight:	20kD
Purification:	The antibody was affinity-purified from rabbit antiserum by affinity-chromatography using epitope-specific immunogen.
Background:	The protein encoded by this gene is a cytokine produced primarily by monocytes and to a lesser extent by lymphocytes. This cytokine has pleiotropic effects in immunoregulation and inflammation. It down-regulates the expression of Th1 cytokines, MHC class II Ags, and costimulatory molecules on macrophages. It also enhances B cell survival, proliferation, and antibody production. This cytokine can block NF-kappa B activity, and is involved in the regulation of the JAK-STAT signaling pathway. Knockout studies in mice suggested the function of this cytokine as an essential immunoregulator in the intestinal tract. Mutations in this gene are associated with an increased susceptibility to HIV-1 infection and rheumatoid arthritis.[provided by RefSeq, May 2011],
Form:	liquid
Buffer:	Liquid in PBS containing 50% glycerol, 0.5%BSAand0.02% sodium azide
Storage:	-20°C/1 year

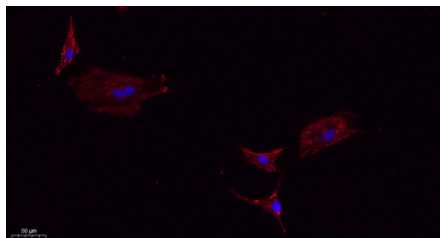
For Research Use Only

IMMUNOLOGICAL SCIENCES

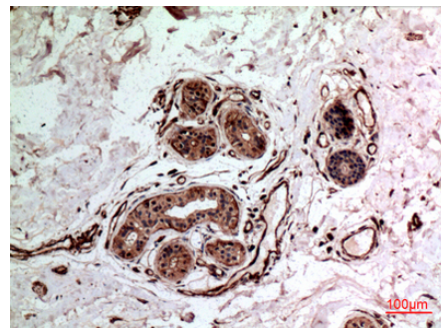
Web-site: <https://immunologicalsciences.com> - E-mail: info@immunologicalsciences.com



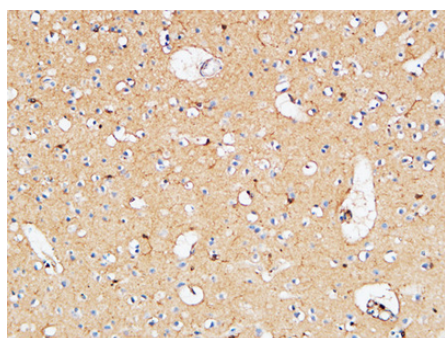
Western Blot analysis of HepG2, Mouse liver cells using IL-10 Polyclonal Antibody. Secondary antibody was diluted at 1:20000



Immunofluorescence analysis of A549. 1, primary Antibody (red) was diluted at 1:200 (4°C overnight). 2, Goat Anti Rabbit IgG (H&L) - Alexa Fluor 594 Secondary antibody was diluted at 1:1000 (room temperature, 50min). 3, Picture B: DAPI (blue) 10min.



Immunohistochemical analysis of paraffin-embedded human breast cancer, antibody was diluted at 1:100



Immunohistochemical analysis of paraffin-embedded Human Cerebral cortex. 1, Antibody was diluted at 1:200 (4°C overnight). 2, High-pressure and temperature EDTA, pH 8.0 was used for antigen retrieval. 3, Secondary antibody was diluted at 1:200 (room temperature)

For Research Use Only
IMMUNOLOGICAL SCIENCES