

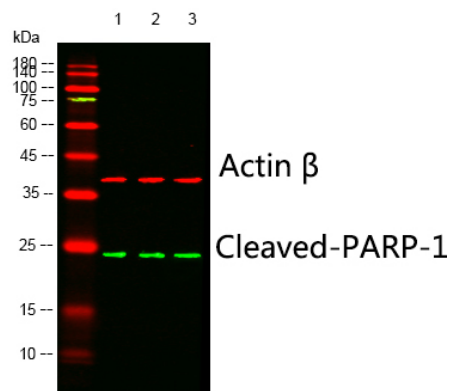


<b>Product name:</b>	Cleaved-PARP-1 (D214) rabbit Polyclonal Antibody
<b>Cat number:</b>	ABE1071
<b>Conjugate:</b>	unconjugated
<b>Host:</b>	Rabbit
<b>Size:</b>	100 ug
<b>Synonyms:</b>	PARP1; ADPRT; PPOL; Poly [ADP-ribose] polymerase 1; PARP-1; ADP-ribosyltransferase diphtheria toxin-like 1; ARTD1; NAD(+) ADP-ribosyltransferase 1; ADPRT 1; Poly[ADP-ribose] synthase 1
<b>Clone:</b>	Polyclonal
<b>Concentration:</b>	1 mg/ml
<b>Isotype:</b>	IgG
<b>Immunogen:</b>	The antiserum was produced against synthesized peptide derived from human PARP. AA range:165-214
<b>Reactivity:</b>	Human;Mouse
<b>Applications:</b>	WB 1:500-2000, IF 1:50-300, IHC 1:50-300
<b>Molecular Weight:</b>	24kD
<b>Purification:</b>	The antibody was affinity-purified from rabbit antiserum by affinity-chromatography using epitope-specific immunogen.
<b>Background:</b>	This gene encodes a chromatin-associated enzyme, poly(ADP-ribosyl)transferase, which modifies various nuclear proteins by poly(ADP-ribosyl)ation. The modification is dependent on DNA and is involved in the regulation of various important cellular processes such as differentiation, proliferation, and tumor transformation and also in the regulation of the molecular events involved in the recovery of cell from DNA damage. In addition, this enzyme may be the site of mutation in Fanconi anemia, and may participate in the pathophysiology of type I diabetes. [provided by RefSeq, Jul 2008],
<b>Form:</b>	liquid
<b>Buffer:</b>	Liquid in PBS containing 50% glycerol, 0.5%BSAand0.02% sodium azide.
<b>Storage:</b>	-20°C/1 year

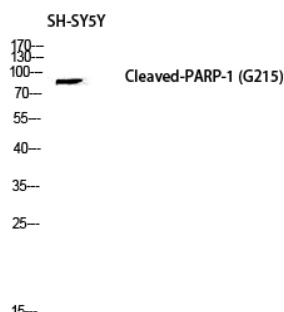
**For Research Use Only**

**IMMUNOLOGICAL SCIENCES**

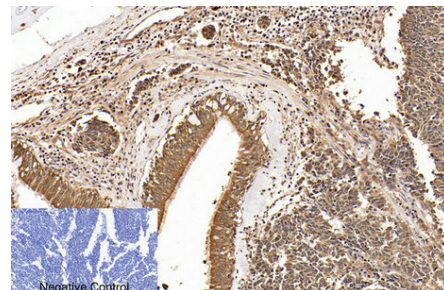
Web-site: <https://immunologicalsciences.com> - E-mail: [info@immunologicalsciences.com](mailto:info@immunologicalsciences.com)



Western blot analysis of lysates from UV treated: 1) MCF-7, 2) 293T, 3) HELA cells, (Green) primary antibody was diluted at 1:1000, 4° overnight, Dylight800 secondary antibody was diluted at 1:10000, 37° 1 hour. (Red) Actin β Monoclonal Antibody (5B7) (Immunoway: YM3028) antibody was diluted at 1:5000 as loading control, 4° overnight, Dylight 680 secondary antibody was diluted at 1:10000, 37° 1 hour.

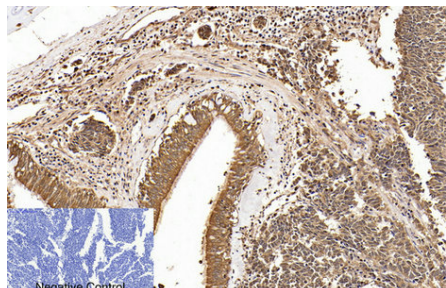


Western blot analysis of SH-SY5Y lysis using Cleaved-PARP-1 (D214) antibody. Antibody was diluted at 1:2000

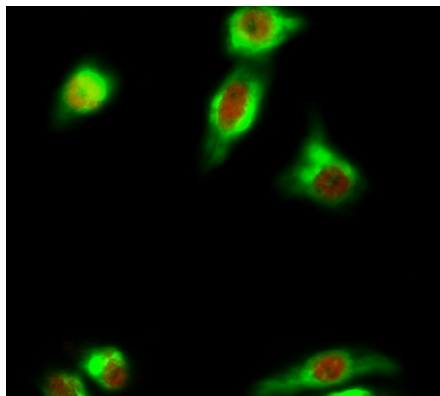


Immunohistochemical analysis of paraffin-embedded Human-uterus-cancer tissue. 1, Cleaved-PARP-1 (D214) Polyclonal Antibody was diluted at 1:200 (4°C, overnight). 2, Sodium citrate pH 6.0 was used for antibody retrieval (>98°C, 20 min). 3, Secondary antibody was diluted at 1:200 (room temperature, 30 min). Negative control was used by secondary antibody only.

**For Research Use Only**  
**IMMUNOLOGICAL SCIENCES**



Immunohistochemical analysis of paraffin-embedded Human-lung-cancer tissue. 1, Cleaved-PARP-1 (D214) Polyclonal Antibody was diluted at 1:200 (4°C, overnight). 2, Sodium citrate pH 6.0 was used for antibody retrieval (>98°C, 20min). 3, Secondary antibody was diluted at 1:200 (room temperature, 30min). Negative control was used by secondary antibody only.



Immunofluorescence analysis of HeLa cell. 1, Cleaved-PARP-1 (D214) Polyclonal Antibody (red) was diluted at 1:200 (4°C overnight). LC3B Polyclonal Antibody (green) was diluted at 1:200 (4°C overnight). 2, Goat Anti Rabbit Alexa Fluor 594 was diluted at 1:1000 (room temperature, 50min). Goat Anti Mouse Alexa Fluor 488 was diluted at 1:1000 (room temperature, 50min).

**For Research Use Only**  
**IMMUNOLOGICAL SCIENCES**