

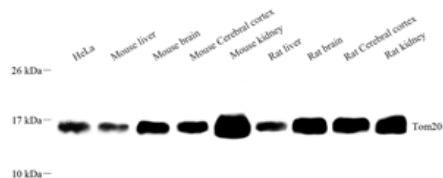


<b>Product name:</b>	Anti-TOMM20 Rabbit pAb
<b>Cat number:</b>	ABS111481
<b>Conjugate:</b>	unconjugated
<b>Host:</b>	Rabbit
<b>Size:</b>	100 µL
<b>Synonyms:</b>	None
<b>Concentration:</b>	1mg/ml
<b>Isotype:</b>	IgG
<b>Immunogen:</b>	Recombinant protein corresponding to Mouse TOMM20
<b>Reactivity:</b>	Human, Mouse, Rat
<b>Applications:</b>	Western Blot: 1: 1000-1: 2000 Immunocytochemistry: 1:500-1:1000 Immunofluorescence: 1:500-1:1000
<b>Molecular Weight:</b>	16 kDa
<b>Purification:</b>	Affinity purification
<b>Background:</b>	TOM20, also named as KIAA0016, belongs to the Tom20 family. It is a central component of the receptor complex responsible for the recognition and translocation of cytosolically synthesized mitochondrial preproteins. Together with TOM22, TOM20 functions as the transit peptide receptor at the surface of the mitochondrion outer membrane and facilitates the movement of preproteins into the TOM40 translocation pore. TOM20 is characterized as major docking receptors to mediate the recognition by different mechanisms.
<b>Form:</b>	Liquid
<b>Buffer:</b>	PBS with 0.02% sodium azide, 100 µg/ml BSA and 50% glycerol.
<b>Storage:</b>	Store at -20 °C for one year. Avoid repeated freeze/thaw cycles.
<b>Subcategory name:</b>	Primary Antibodies

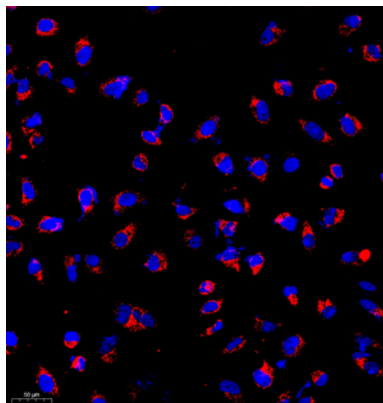
**For Research Use Only**

**IMMUNOLOGICAL SCIENCES**

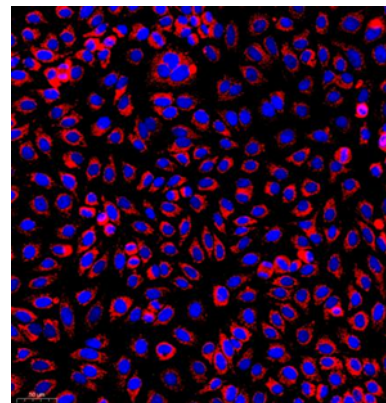
Web-site: <https://immunologicalsciences.com> - E-mail: [info@immunologicalsciences.com](mailto:info@immunologicalsciences.com)



WB analysis of .Tom20 . Sample:  
Protein treated by RIPA Lysis Buffer .  
Blocking buffer: 3% Nonfat dry milk in  
TBST, RT, 1h. Primary antibody: 1:  
1000, 4°C overnight. Secondary  
antibody: HRP conjugated Goat  
Anti-Rabbit IgG , 1: 3000, RT, 1h.



ICC analysis of.Tom20 red. Sample:  
HeLa, 4% PFA 20min. Blocking buffer:  
Blocking buffer: 3% BSA in PBS, RT,  
30min. Primary antibody: 1: 1000, 4°C  
overnight. Secondary antibody: Cy3  
conjugated Goat Anti-Rabbit IgG , 1:  
300, RT, 1h..



ICC analysis of.Tom20 red. Sample:  
HepG2, 4% PFA 20min. Blocking  
buffer: Blocking buffer: 3% BSA in PBS,  
RT, 30min. Primary antibody: 1: 1000,  
4°C overnight. Secondary antibody: Cy3  
conjugated Goat Anti-Rabbit IgG , 1:  
300, RT, 1h..

**For Research Use Only  
IMMUNOLOGICAL SCIENCES**

Web-site: <https://immunologicalsciences.com> - E-mail: [info@immunologicalsciences.com](mailto:info@immunologicalsciences.com)