

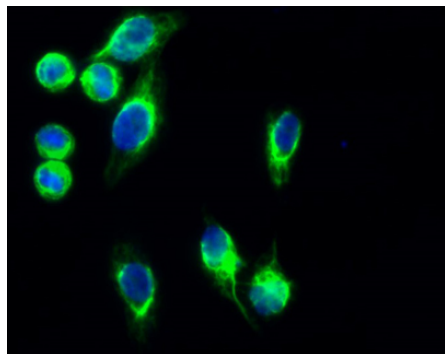


<b>Product name:</b>	GFAP Rabbit Polyclonal Antibody
<b>Cat number:</b>	ABE5510
<b>Conjugate:</b>	unconjugated
<b>Host:</b>	Rabbit
<b>Size:</b>	100 ug
<b>Synonyms:</b>	GFAP; Glial fibrillary acidic protein; GFAP
<b>Clone:</b>	Polyclonal
<b>Concentration:</b>	1 mg/ml
<b>Isotype:</b>	IgG
<b>Immunogen:</b>	The antiserum was produced against synthesized peptide derived from human GFAP. AA range:11-60
<b>Reactivity:</b>	Human;Rat;Mouse;
<b>Applications:</b>	Western Blot: 1/500 - 1/2000. Immunohistochemistry: 1/100 - 1/300. Immunofluorescence: 1/200 - 1/1000. ELISA: 1/5000. Not yet tested in other applications.
<b>Molecular Weight:</b>	50kD
<b>Purification:</b>	The antibody was affinity-purified from rabbit antiserum by affinity-chromatography using epitope-specific immunogen.
<b>Background:</b>	This gene encodes one of the major intermediate filament proteins of mature astrocytes. It is used as a marker to distinguish astrocytes from other glial cells during development. Mutations in this gene cause Alexander disease, a rare disorder of astrocytes in the central nervous system. Alternative splicing results in multiple transcript variants encoding distinct isoforms. [provided by RefSeq, Oct 2008],
<b>Form:</b>	Liquid
<b>Buffer:</b>	Liquid in PBS containing 50% glycerol, 0.5%BSAand0.02% sodium azide
<b>Storage:</b>	-20°C/1 year

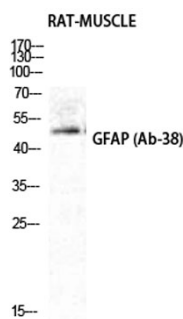
**For Research Use Only**

**IMMUNOLOGICAL SCIENCES**

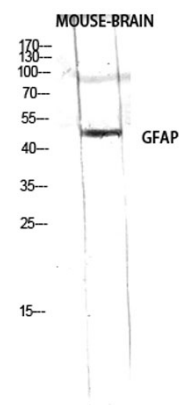
Web-site: <https://immunologicalsciences.com> - E-mail: [info@immunologicalsciences.com](mailto:info@immunologicalsciences.com)



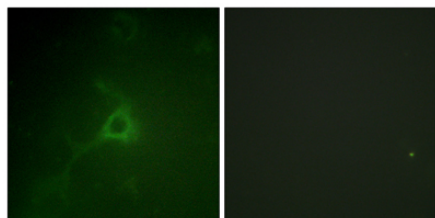
Immunofluorescence analysis of Hela cell. 1. GFAP Polyclonal Antibody(green) was diluted at 1:200 (4° overnight). 2. Goat Anti Rabbit Alexa Fluor 488 was diluted at 1:1000 (room temperature, 50min). 3. DAPI(blue) 10min.



Western Blot analysis of RAT-MUSCLE cells using GFAP Polyclonal Antibody diluted at 1:2000



Western Blot analysis of RAW using GFAP Polyclonal Antibody diluted at 1:2000



Immunofluorescence analysis of COS7 cells, using GFAP Polyclonal Antibody. The picture on the right is blocked with the synthesized peptide.

**For Research Use Only  
IMMUNOLOGICAL SCIENCES**

Web-site: <https://immunologicalsciences.com> - E-mail: [info@immunologicalsciences.com](mailto:info@immunologicalsciences.com)